

PARTS CATALOGUE

F9.9FMH'09 (6AU2)

F9.9MHH (6AU2)

F9.9EHH (6AU2)

F9.9FMH
F9.9MHH/F9.9EHH
PARTS CATALOGUE
©2008 by Yamaha Motor Co., Ltd.
1st edition, March 2008
All rights reserved.
Any reprinting or unauthorized use
without the written permission of
Yamaha Motor Co., Ltd.
is expressly prohibited.
Printed in Japan.

FOREWORD

This Parts Catalogue is related to the parts for the model(s) on the cover page. When you are ordering replacement parts, please refer to this Parts Catalogue and quote both part numbers and part names correctly.

1. Modifications or additions which have been made after the issue of the Parts Catalogue will be announced in the Parts News.
It is advisable that you make the necessary corrections to the Parts Catalogue according to the Parts News.

2. Abbreviations

The following abbreviations are used in this Parts Catalogue.

“UR” Use specified parts number.

“UN” Use as many as needed.

“AP” Alternate Parts

“LM” Locally Made (Parts need to be ordered locally)

“F#” Frame No. (Applicable machine No.)

“O/S” Over Size

3. The number of components for assembly

- Parts, which are to be supplied in an assembly, are listed with a dot (.) in front of the part name as shown below.
- The numeral appearing to the right of each component part indicates the quantity of parts for each assembly unit.

| PART NO. | DESCRIPTION | Q'TY | REMARKS |
|--------------|--------------------------|------|---------|
| 2F5-83310-60 | FRONT FLASHER LIGHT ASSY | 2 | |
| 115-83311-60 | .BULB (6V-18W) | 1 | |

4. Applicable colours of graphics are represented in the “REMARKS” as shown below.

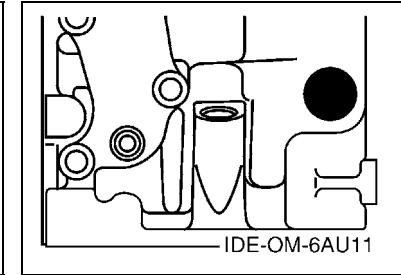
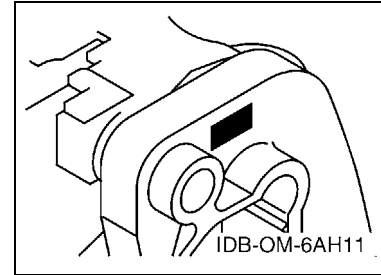
| PART NO. | DESCRIPTION | Q'TY | REMARKS |
|-----------------|---------------------|------|---------|
| 2N4-24110-00-X5 | FUEL TANK COMP. | 2 | MXR |
| 3J1-24240-10 | .GRAPHIC, FUEL TANK | 1 | FOR MXR |

5. Note that the illustrations for reference in finding parts numbers are not to be used for assembling. When assembling, please use the applicable service manual.

6. The asterisk (*) before a reference number indicates modified items after the first edition.

7. Applicable Serial No.

Engine Serial No.



8. Applicable Engine Starting Serial No.

| Model | Serial No. | Model | Serial No. |
|-------|--------------|-------|--------------|
| F9.9F | 6AUK-1007340 | F9.9 | 6AUK-1007340 |
| | | | |
| | | | |
| | | | |

9. Applicable Colour Code

| Abbreviation | Colour Name | Colour Code |
|--------------|-----------------------------|-------------|
| DBNM2 | DARK BLUISH GRAY METALLIC 2 | 004D |

10. Quantity Column Information

| Column No. | Name Of Q'ty Column | Applicable Model |
|------------|---------------------|------------------|
| 1 | MH | F9.9FMH,F9.9MHH |
| 2 | EH | F9.9EHH |
| | | |
| | | |

CONTENTS

| | |
|------------------------------|----|
| TOP COWLING | 1 |
| CYLINDER & CRANKCASE 1 | 2 |
| CRANKSHAFT & PISTON | 3 |
| CYLINDER & CRANKCASE 2 | 4 |
| VALVE | 5 |
| INTAKE | 6 |
| CARBURETOR | 7 |
| OIL PUMP | 9 |
| FUEL | 10 |
| STARTER | 12 |
| GENERATOR | 14 |
| ELECTRICAL 1 | 15 |
| ELECTRICAL 2 | 16 |
| ELECTRICAL 3 | 17 |
| STARTING MOTOR | 18 |
| BOTTOM COWLING | 19 |
| STEERING | 21 |
| STEERING FRICTION | 24 |
| CONTROL | 25 |
| REMO CON ATTACHMENT | 27 |
| BRACKET 1 | 28 |
| BRACKET 2 | 30 |
| UPPER CASING | 31 |
| OIL PAN | 32 |
| LOWER CASING & DRIVE 1 | 33 |
| LOWER CASING & DRIVE 2 | 36 |
| FUEL TANK | 37 |
| STEERING GUIDE | 38 |
| OPTIONAL PARTS 1 | 39 |
| OPTIONAL PARTS 2 | 41 |
| OPTIONAL PARTS 3 | 42 |
| REPAIR KIT 1 | 43 |
| REPAIR KIT 2 | 44 |
| REPAIR KIT 3 | 45 |
| INDEX | |
| NUMERICAL INDEX | 46 |

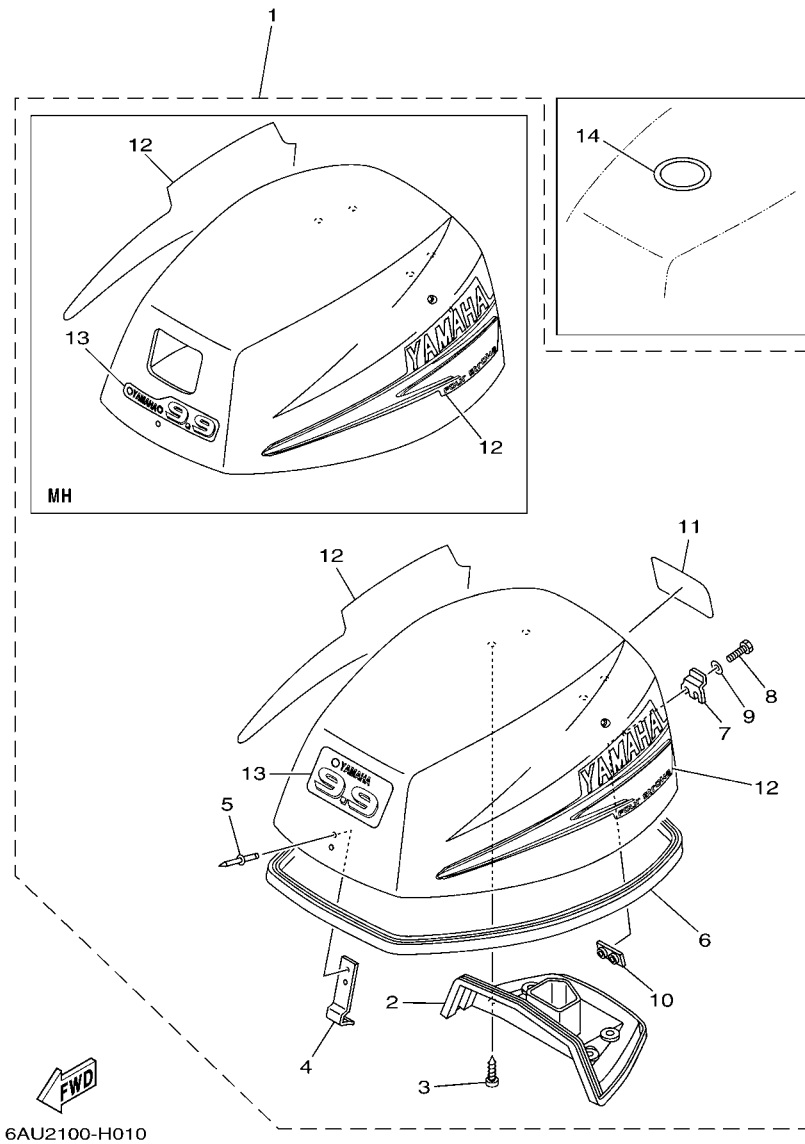
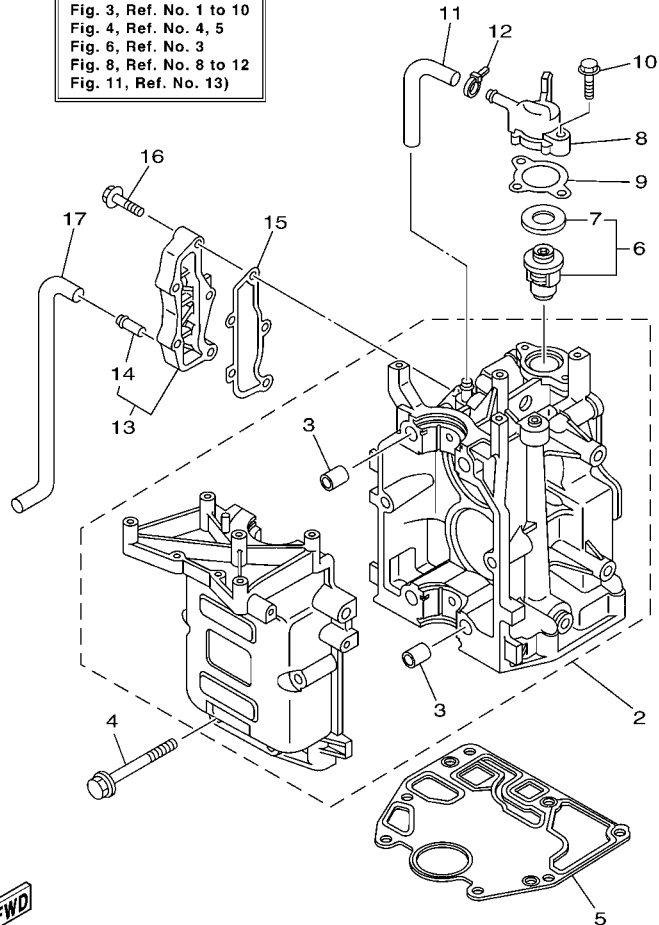


FIG. 1 TOP COWLING

| REF. NO. | PART NO. | DESCRIPTION | MH | EH | | REMARKS |
|----------|-----------------|---------------------|----|----|--|---------|
| 1 | 6AU-42610-10-4D | TOP COWLING ASSY | 1 | | | |
| | 6AU-42610-30-4D | TOP COWLING ASSY | | 1 | | |
| 2 | 6AU-42613-00 | .MOLDING, AIR DUCT | 1 | 1 | | |
| 3 | 97780-60516 | .SCREW, TAPPING | 4 | 4 | | |
| 4 | 6G1-42651-02 | .HOOK | 1 | 1 | | |
| 5 | 90266-04M04 | .RIVET | 2 | 2 | | |
| 6 | 60R-42615-00 | .SEAL | 1 | 1 | | |
| 7 | 68T-42652-00 | .HOOK | 1 | 1 | | |
| 8 | 97095-05014 | .BOLT | 2 | 2 | | |
| 9 | 92995-05600 | .WASHER | 2 | 2 | | |
| 10 | 68T-42649-00 | .HOLDER, CLAMP BAND | 1 | 1 | | |
| 11 | 6G9-42678-30 | .GRAPHIC, REAR | 1 | 1 | | |
| 12 | 68T-W0070-20 | .GRAPHIC SET | 1 | 1 | | |
| 13 | 6AU-42677-00 | .GRAPHIC, FRONT | 1 | | | |
| | 6AV-42686-00 | .EMBLEM, FRONT | | 1 | | |
| 14 | 67F-13434-10 | LABEL, CAUTION | 1 | 1 | | |
| | | | | | | |
| | | | | | | |
| | | | | | | |
| | | | | | | |
| | | | | | | |

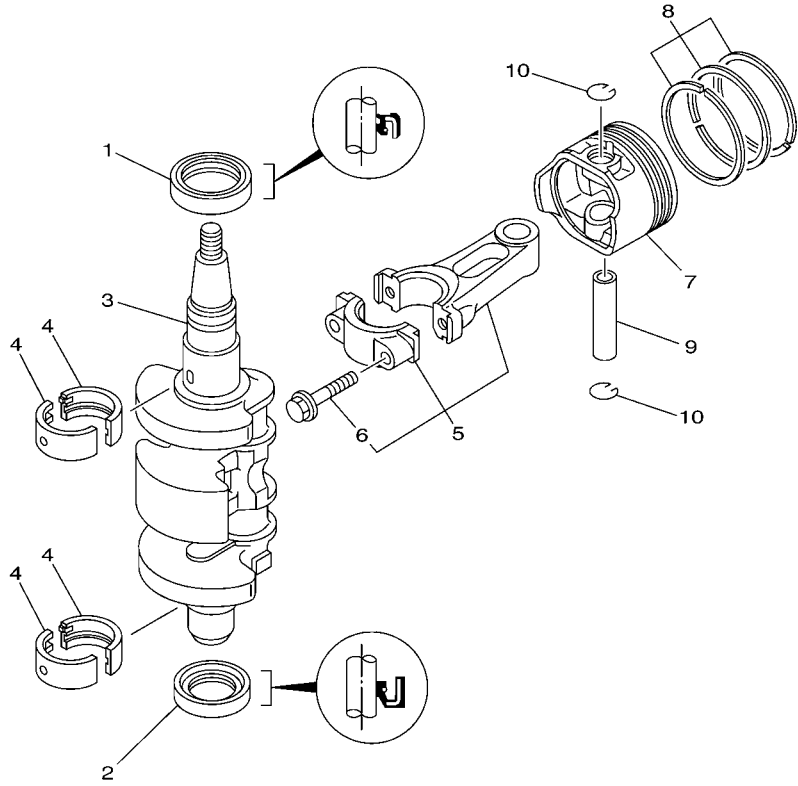
1
**CYLINDER BLOCK
 ASSY**
 (Fig. 2, Ref. No. 2 to 10,
 13 to 16
 Fig. 3, Ref. No. 1 to 10
 Fig. 4, Ref. No. 4, 5
 Fig. 6, Ref. No. 3
 Fig. 8, Ref. No. 8 to 12
 Fig. 11, Ref. No. 13)



6AU2100-H020

FIG. 2 CYLINDER & CRANKCASE 1

| REF. NO. | PART NO. | DESCRIPTION | MH | EH | | | | REMARKS |
|----------|-----------------|-----------------------------|----|----|--|--|--|---------|
| 1 | 6AU-W009B-00-1S | CYLINDER BLOCK ASSY | 1 | 1 | | | | |
| 2 | 6AU-15100-00-1S | CRANKCASE ASSY | 1 | 1 | | | | |
| 3 | 99530-12016 | .PIN, DOWEL | 4 | 4 | | | | |
| 4 | 90119-08M29 | BOLT, WITH WASHER | 6 | 6 | | | | |
| 5 | 68T-11351-00 | GASKET, CYLINDER | 1 | 1 | | | | |
| 6 | 66M-12411-01 | THERMOSTAT | 1 | 1 | | | | |
| 7 | 688-12412-00 | .SEAL, THERMOSTAT | 1 | 1 | | | | |
| 8 | 68T-12413-00-1S | COVER, THERMOSTAT | 1 | 1 | | | | |
| 9 | 6G8-12414-A0 | GASKET, COVER | 1 | 1 | | | | |
| 10 | 90119-06MA2 | BOLT, WITH WASHER | 2 | 2 | | | | |
| 11 | 68T-12481-00 | PIPE 1 | 1 | 1 | | | | |
| 12 | 90465-11M10 | CLAMP | 1 | 1 | | | | |
| 13 | 6AU-41113-00-1S | OUTER COVER, EXHAUST | 1 | 1 | | | | |
| 14 | 6E9-24378-00 | .PIPE, JOINT 3 | 1 | 1 | | | | |
| 15 | 68T-41114-A0 | GASKET, EXHAUST OUTER COVER | 1 | 1 | | | | |
| 16 | 90119-06MA3 | BOLT, WITH WASHER | 5 | 5 | | | | |
| 17 | 68T-12482-00 | PIPE 2 | 1 | 1 | | | | |



68R0010-0031

FIG. 3 CRANKSHAFT & PISTON

| REF. NO. | PART NO. | DESCRIPTION | MH | EH | | | REMARKS |
|----------|-----------------|------------------------------|----|----|--|--|----------|
| 1 | 93102-30M22 | OIL SEAL | 1 | 1 | | | |
| 2 | 93101-25M69 | OIL SEAL | 1 | 1 | | | |
| 3 | 6AU-11411-00 | CRANKSHAFT | 1 | 1 | | | |
| 4 | 68T-11416-00 | PLANE BEARING, CRANKSHAFT 1 | 4 | 4 | | | UR BROWN |
| | 68T-11416-10 | PLANE BEARING, CRANKSHAFT 1 | 4 | 4 | | | UR BLACK |
| | 68T-11416-20 | PLANE BEARING, CRANKSHAFT 1 | 4 | 4 | | | UR BLUE |
| 5 | 6AU-11650-00 | CONNECTING ROD ASSY | 2 | 2 | | | |
| 6 | 67D-11654-00 | .BOLT, CONNECTING ROD | 2 | 2 | | | |
| 7 | 6AU-11631-00-96 | PISTON (STD) | 2 | 2 | | | |
| | 6AU-11635-00 | PISTON (0.25MM O/S) | 2 | 2 | | | AP |
| | 6AU-11636-00 | PISTON (0.50MM O/S) | 2 | 2 | | | AP |
| 8 | 68T-11603-01 | PISTON RING SET (STD) | 2 | 2 | | | |
| | 68T-11604-01 | PISTON RING SET (0.25MM O/S) | 2 | 2 | | | AP |
| | 68T-11605-01 | PISTON RING SET (0.50MM O/S) | 2 | 2 | | | AP |
| 9 | 68T-11633-00 | PIN, PISTON | 2 | 2 | | | |
| 10 | 93450-15023 | CIRCLIP | 4 | 4 | | | |
| | | | | | | | |
| | | | | | | | |
| | | | | | | | |

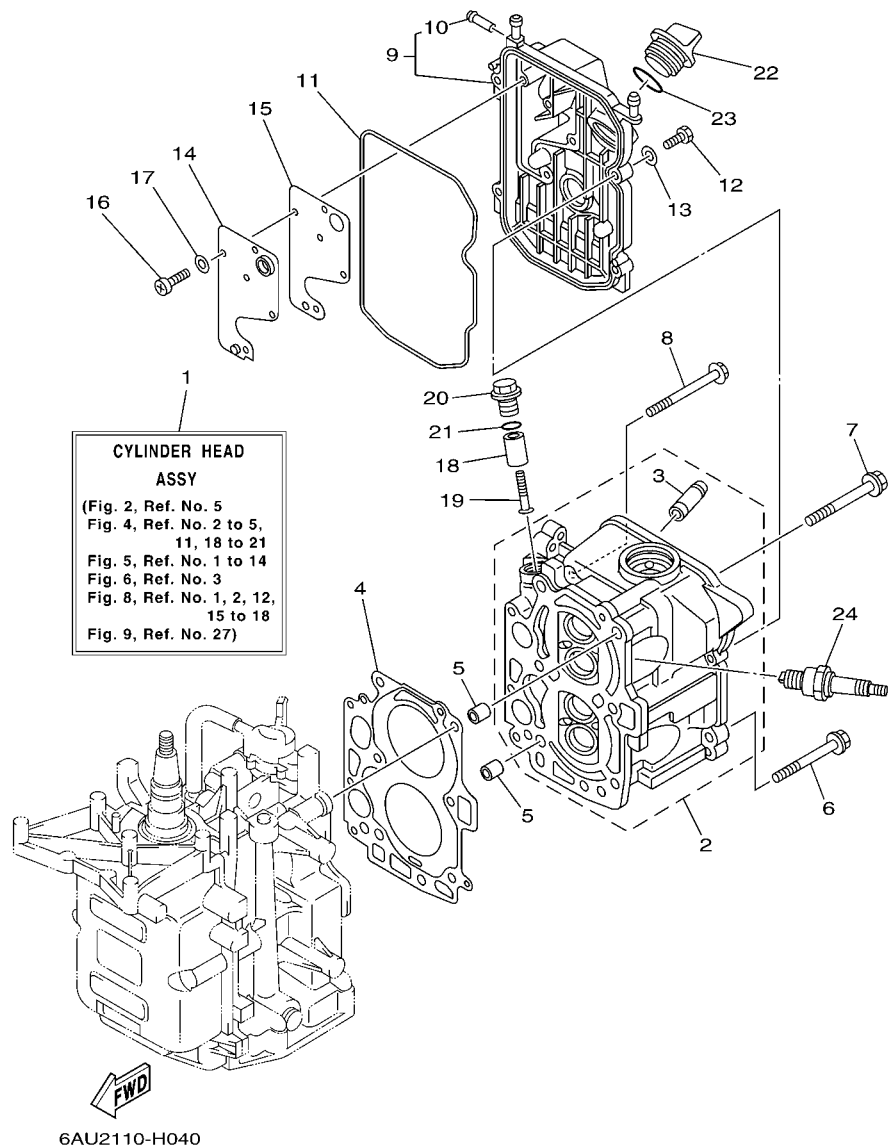
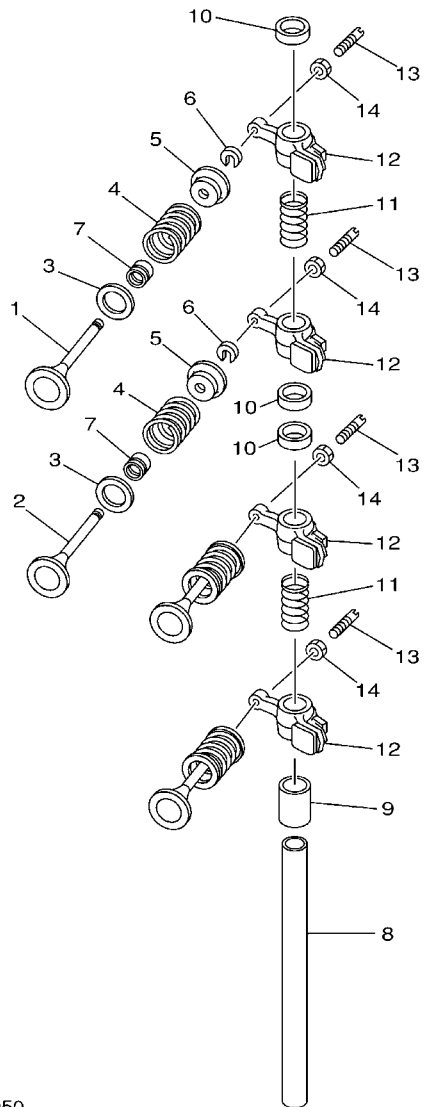


FIG. 4 CYLINDER & CRANKCASE 2

| REF. NO. | PART NO. | DESCRIPTION | MH | EH | REMARKS |
|----------|-----------------|----------------------------|----|----|---------|
| 1 | 6AU-W009A-01-1S | CYLINDER HEAD ASSY | 1 | 1 | |
| 2 | 6AU-11111-00-1S | HEAD, CYLINDER 1 | 1 | 1 | |
| 3 | 6AU-11133-10 | .GUIDE, VALVE 1 | 4 | 4 | |
| 4 | 68T-11181-00 | GASKET, CYLINDER HEAD 1 | 1 | 1 | |
| 5 | 99510-10114 | PIN, DOWEL | 2 | 2 | |
| 6 | 90105-08M36 | BOLT, FLANGE | 2 | 2 | |
| 7 | 90105-08M78 | BOLT, FLANGE | 4 | 4 | |
| 8 | 90119-06049 | BOLT, WITH WASHER | 3 | 3 | |
| 9 | 68T-11191-00-1S | COVER, CYLINDER HEAD 1 | 1 | 1 | |
| 10 | 650-24378-00 | .PIPE, JOINT 4 | 1 | 1 | |
| 11 | 68T-11356-00 | SEAL, CYLINDER 2 | 1 | 1 | |
| 12 | 97095-06020 | BOLT | 4 | 4 | |
| 13 | 92995-06600 | WASHER | 4 | 4 | |
| 14 | 68T-11168-00 | COVER, BREATHER | 1 | 1 | |
| 15 | 68T-11169-A0 | GASKET, BREATHER COVER | 1 | 1 | |
| 16 | 98507-04010 | SCREW, PAN HEAD | 5 | 5 | |
| 17 | 92907-04600 | WASHER | 5 | 5 | |
| 18 | 6G8-11325-00 | ANODE | 1 | 1 | |
| 19 | 97880-05025 | SCREW, PAN HEAD | 1 | 1 | |
| 20 | 6G8-11197-01 | PLUG, BLIND | 1 | 1 | |
| 21 | 93210-13M63 | O-RING | 1 | 1 | |
| 22 | 6G8-15363-00 | PLUG, OIL | 1 | 1 | |
| 23 | 93210-24M79 | O-RING | 1 | 1 | |
| 24 | 94702-00274 | PLUG, SPARK (NGK BR6HS-10) | 2 | 2 | |




 68R0010-0050

FIG. 5 VALVE

| REF. NO. | PART NO. | DESCRIPTION | MH | EH | | | REMARKS |
|----------|--------------|------------------------|----|----|--|--|---------|
| 1 | 67D-12111-00 | VALVE, INTAKE | 2 | 2 | | | |
| 2 | 67D-12121-00 | VALVE, EXHAUST | 2 | 2 | | | |
| 3 | 68T-12116-00 | SEAT, VALVE SPRING | 4 | 4 | | | |
| 4 | 60R-12113-00 | SPRING, VALVE INNER | 4 | 4 | | | |
| 5 | 7NJ-12117-00 | RETAINER, VALVE SPRING | 4 | 4 | | | |
| 6 | 7NJ-12118-00 | COTTER, VALVE | 4 | 4 | | | |
| 7 | 51Y-12119-00 | SEAL, VALVE STEM | 4 | 4 | | | |
| 8 | 68T-12146-00 | SHAFT, ROCKER | 1 | 1 | | | |
| 9 | 90387-13M56 | COLLAR | 1 | 1 | | | |
| 10 | 90387-14M03 | COLLAR | 3 | 3 | | | |
| 11 | 90501-12M40 | SPRING, COMPRESSION | 2 | 2 | | | |
| 12 | 68T-12151-00 | ARM, VALVE ROCKER | 4 | 4 | | | |
| 13 | 6G8-12159-00 | SCREW, VALVE ADJUSTING | 4 | 4 | | | |
| 14 | 6G8-12158-00 | NUT, LOCK | 4 | 4 | | | |
| | | | | | | | |
| | | | | | | | |
| | | | | | | | |
| | | | | | | | |

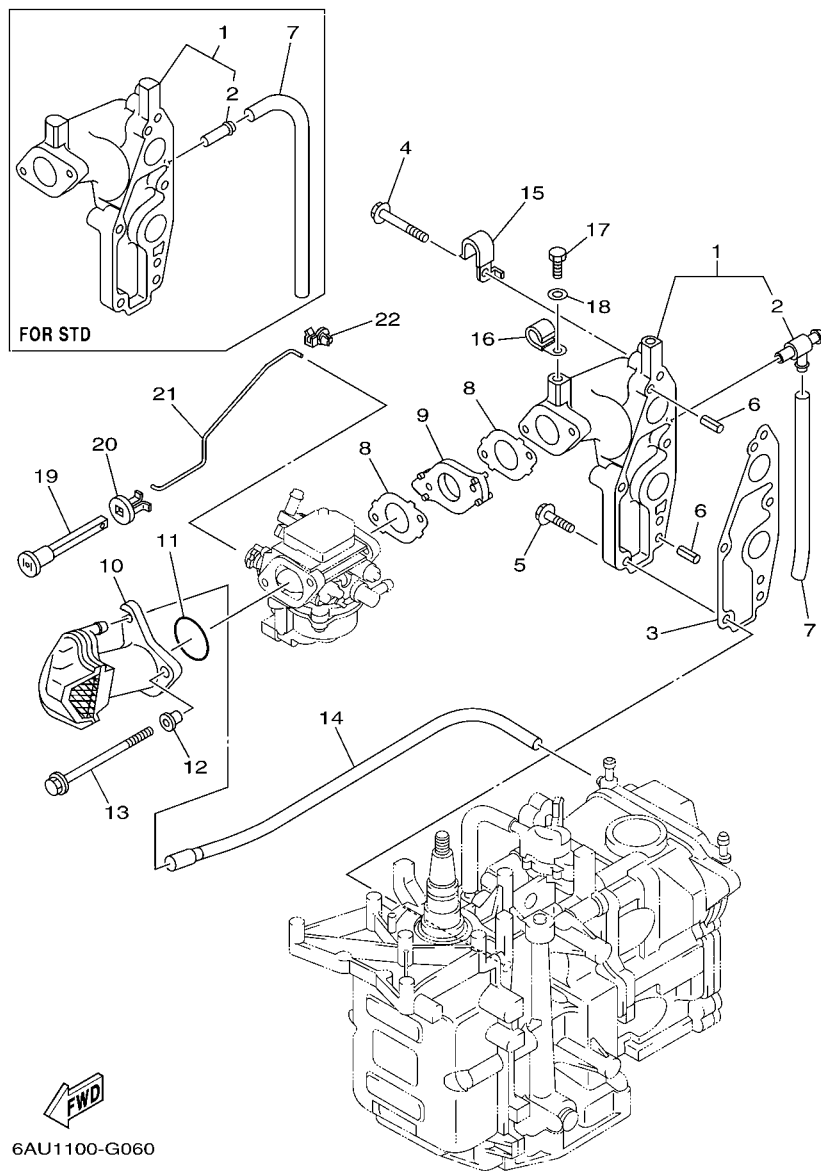
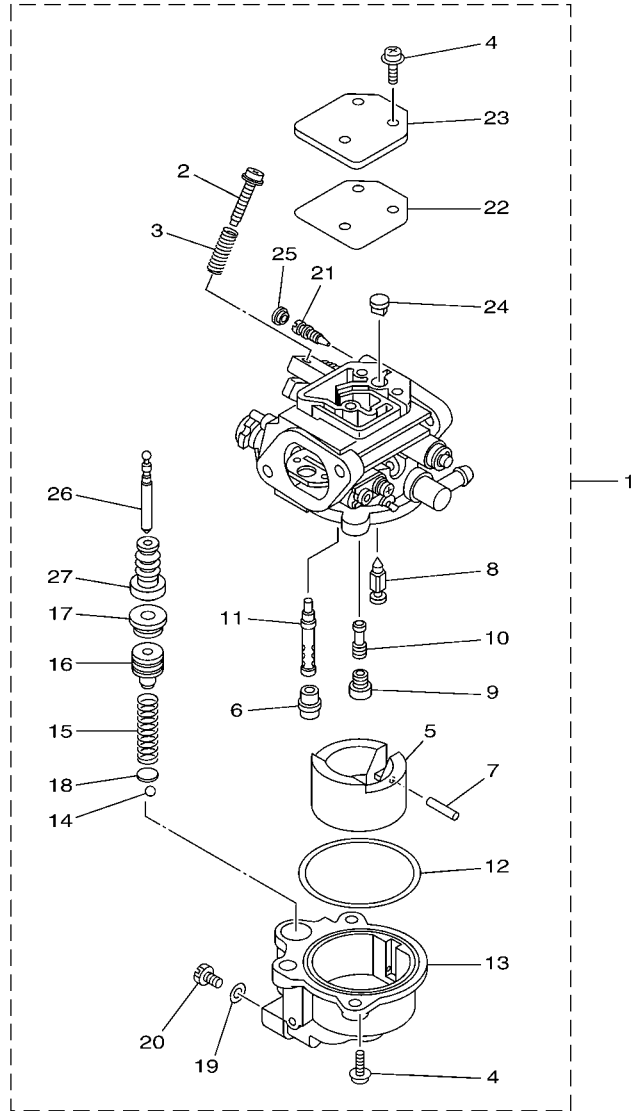


FIG. 6 INTAKE

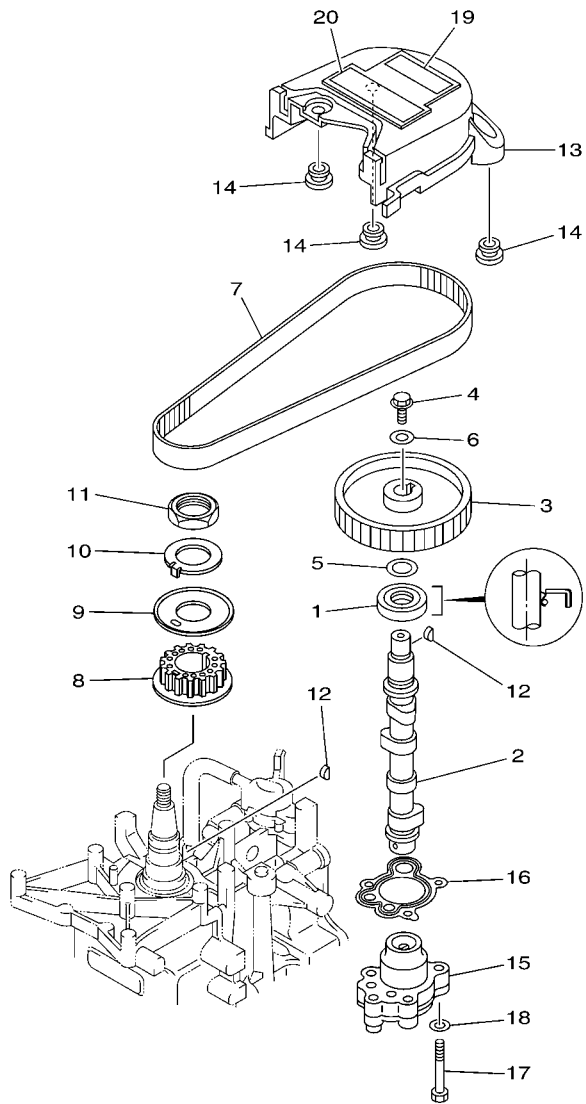
| REF. NO. | PART NO. | DESCRIPTION | MH | EH | REMARKS |
|----------|-----------------|-----------------------|----|----|---------------|
| 1 | 68T-13641-20-1S | MANIFOLD 1 | 1 | 1 | FLUSHING KIT |
| | 68T-13641-01-1S | MANIFOLD 1 | 1 | | STD (FOR OCE) |
| 2 | 67F-12482-00 | .PIPE 2 | 1 | 1 | FLUSHING KIT |
| | 650-24378-00 | .PIPE, JOINT 4 | 1 | | STD (FOR OCE) |
| 3 | 68T-13645-00 | GASKET, MANIFOLD 1 | 1 | 1 | |
| 4 | 90119-06MA5 | BOLT, WITH WASHER | 3 | 3 | |
| 5 | 90119-06MA3 | BOLT, WITH WASHER | 2 | 2 | |
| 6 | 91690-50014 | PIN, SPRING | 2 | 2 | |
| 7 | 90445-09M20 | HOSE (L95) | 1 | 1 | FLUSHING KIT |
| | 90445-09074 | HOSE (L130) | 1 | | STD (FOR OCE) |
| 8 | 68T-13646-A0 | GASKET, MANIFOLD 2 | 2 | 2 | |
| 9 | 68T-14271-00 | INSULATOR | 1 | 1 | |
| 10 | 6AU-14440-00 | SILENCER ASSY, INTAKE | 1 | 1 | |
| 11 | 93210-31MJ5 | O-RING | 1 | 1 | |
| 12 | 90387-06M70 | COLLAR | 2 | 2 | |
| 13 | 97595-06585 | BOLT, WITH WASHER | 2 | 2 | |
| 14 | 68T-12483-00 | PIPE 3 | 1 | 1 | |
| 15 | 90465-08M99 | CLAMP | 1 | 1 | |
| 16 | 90465-08M83 | CLAMP | 1 | 1 | FLUSHING KIT |
| 17 | 97095-06010 | BOLT | 1 | 1 | FLUSHING KIT |
| 18 | 92995-06600 | WASHER | 1 | 1 | FLUSHING KIT |
| 19 | 6H4-41271-01 | KNOB, CHOKE | 1 | 1 | |
| 20 | 689-41273-00 | GROMMET | 1 | 1 | |
| 21 | 68T-41256-00 | ROD, CHOKE 1 | 1 | 1 | |
| 22 | 6J8-41262-00 | JOINT, CHOKE LEVER | 1 | 1 | |



6AU1100-G070

FIG. 7 CARBURETOR

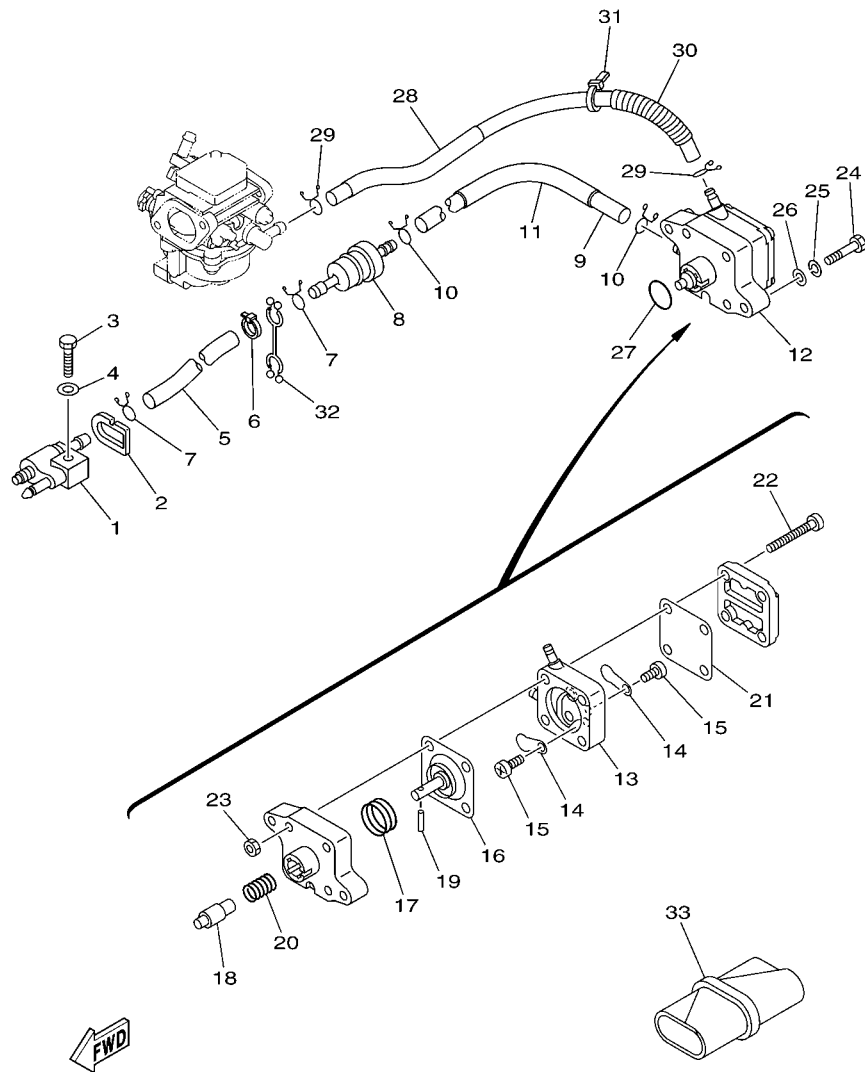
| REF. NO. | PART NO. | DESCRIPTION | MH | EH | | REMARKS |
|----------|--------------|------------------------|----|----|--|------------------|
| 1 | 6AU-14301-00 | CARBURETOR ASSY 1 | 1 | | | FOR OCE |
| | 6AU-14301-10 | CARBURETOR ASSY 1 | 1 | 1 | | FOR CAN |
| 2 | 6E5-14321-00 | .SCREW, THROTTLE | 1 | 1 | | |
| 3 | 6J8-14334-00 | .SPRING, THROTTLE | 1 | 1 | | |
| 4 | 97980-04112 | .SCREW, WITH WASHER | 5 | 5 | | |
| 5 | 6AU-14385-00 | .FLOAT | 1 | 1 | | |
| 6 | 67D-14966-00 | .RUBBER CAP | 1 | 1 | | |
| 7 | 67D-14386-00 | .PIN, FLOAT | 1 | 1 | | |
| 8 | 68T-14546-00 | .VALVE, NEEDLE | 1 | 1 | | |
| 9 | 6AU-1492E-46 | .JET, MAIN (#92) | 1 | 1 | | |
| 10 | 6AU-1492F-20 | .JET, AIR SLOW (#40) | 1 | 1 | | |
| 11 | 6AU-1492A-00 | .NOZZLE, MAIN | 1 | 1 | | |
| 12 | 6AU-14984-00 | .GASKET, FLOAT CHAMBER | 1 | 1 | | |
| 13 | 6AU-14982-00 | .HOLDER | 1 | 1 | | |
| 14 | 6AU-1431B-00 | .BALL | 1 | 1 | | |
| 15 | 6AU-14335-00 | .SPRING, PLUNGER | 1 | 1 | | |
| 16 | 6AU-14371-10 | .PLUNGER, STARTER | 1 | 1 | | |
| 17 | 6AU-1431A-00 | .GUIDE | 1 | 1 | | |
| 18 | 6AU-14918-00 | .RING | 1 | 1 | | |
| 19 | 6J8-14959-00 | .GASKET | 1 | 1 | | |
| 20 | 66T-14991-00 | .PLUG, DRAIN | 1 | 1 | | |
| 21 | 67D-14323-00 | .SCREW, AIR ADJUSTING | 1 | 1 | | |
| 22 | 67D-14536-00 | .GASKET | 1 | 1 | | |
| 23 | 67D-14527-00 | .PLATE | 1 | 1 | | |
| 24 | 68T-14126-00 | .PLUG | 1 | 1 | | |
| 25 | 67D-1432A-00 | .PLUG | 1 | 1 | | FOR 6AU-14301-10 |
| 26 | 6AU-14379-00 | .ROD, STARTER | 1 | 1 | | |



60N2100-E080

FIG. 8 OIL PUMP

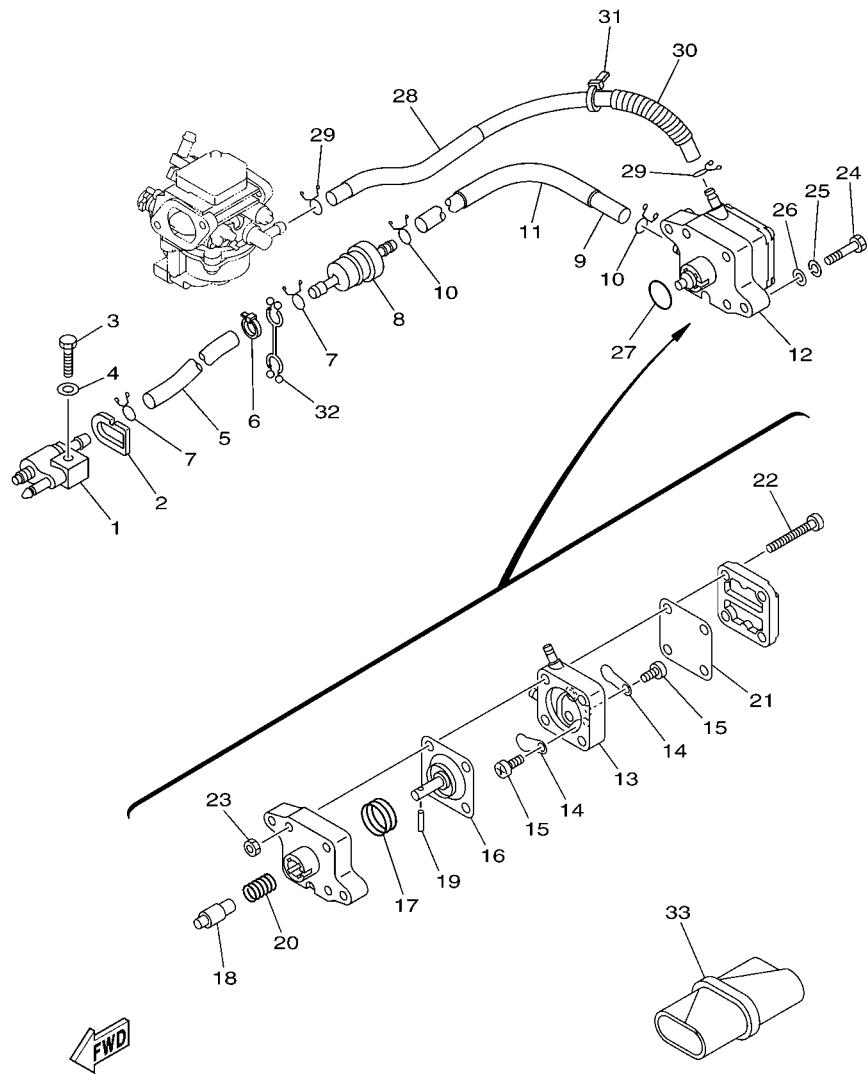
| REF. NO. | PART NO. | DESCRIPTION | MH | EH | | | | REMARKS |
|----------|-----------------|--------------------|----|----|--|--|--|---------|
| 1 | 93102-18M21 | OIL SEAL | 1 | 1 | | | | |
| 2 | 68T-12171-00 | CAMSHAFT 1 | 1 | 1 | | | | |
| 3 | 66M-11537-00-94 | GEAR, DRIVEN | 1 | 1 | | | | |
| 4 | 90105-06M14 | BOLT FLANGE | 1 | 1 | | | | |
| 5 | 90201-13201 | WASHER, PLATE | 1 | 1 | | | | |
| 6 | 90201-06M94 | WASHER, PLATE | 1 | 1 | | | | |
| 7 | 68T-46241-00 | V-BELT | 1 | 1 | | | | |
| 8 | 68T-11536-00 | GEAR, DRIVE | 1 | 1 | | | | |
| 9 | 68T-11557-00 | WASHER 1 | 1 | 1 | | | | |
| 10 | 6G8-11587-01 | WASHER, LOCK | 1 | 1 | | | | |
| 11 | 90170-24M09 | NUT | 1 | 1 | | | | |
| 12 | 90280-03M01 | KEY, WOODRUFF | 2 | 2 | | | | |
| 13 | 6AU-46297-00 | COVER, DUST | 1 | 1 | | | | |
| 14 | 90480-10627 | GROMMET | 3 | 3 | | | | |
| 15 | 68T-13300-00 | OIL PUMP ASSY | 1 | 1 | | | | |
| 16 | 68T-13329-00 | GASKET, PUMP COVER | 1 | 1 | | | | |
| 17 | 97095-06030 | BOLT | 3 | 3 | | | | |
| 18 | 92995-06600 | WASHER | 3 | 3 | | | | |
| 19 | 6G9-12138-40 | MARK, CAUTION | 1 | | | | | FOR OCE |
| | 6G9-12138-50 | MARK, CAUTION | 1 | 1 | | | | FOR CAN |
| 20 | 6AU-13437-40 | MARK, CAUTION | 1 | | | | | FOR OCE |
| | 6AU-13437-50 | MARK, CAUTION | 1 | 1 | | | | FOR CAN |



6AU2110-H090

FIG. 9 FUEL

| REF. NO. | PART NO. | DESCRIPTION | MH | EH | | | REMARKS |
|----------|--------------|-------------------------|----|----|--|--|---------|
| 1 | 6G1-24304-02 | FUEL PIPE JOINT COMP. 1 | 1 | 1 | | | |
| 2 | 61N-24329-00 | SEAL | 1 | 1 | | | |
| 3 | 97095-06025 | BOLT | 1 | 1 | | | |
| 4 | 92995-06600 | WASHER | 1 | 1 | | | |
| 5 | 90445-10046 | HOSE (L295) | 1 | 1 | | | |
| 6 | 90465-11M10 | CLAMP | 1 | 1 | | | |
| 7 | 90467-09M09 | CLIP | 2 | 2 | | | |
| 8 | 68T-24251-00 | STRAINER 1 | 1 | 1 | | | |
| 9 | 90445-10M50 | HOSE (L170) | 1 | 1 | | | |
| 10 | 90467-09M09 | CLIP | 2 | 2 | | | |
| 11 | 90445-16010 | HOSE (L140) | 1 | 1 | | | |
| 12 | 68T-24410-01 | FUEL PUMP ASSY | 1 | 1 | | | |
| 13 | 66M-24413-01 | .BODY 2 | 1 | 1 | | | |
| 14 | 6A0-24421-01 | .VALVE, CHECK | 2 | 2 | | | |
| 15 | 6E7-14325-00 | .SCREW, PAN HEAD | 2 | 2 | | | |
| 16 | 66M-24411-01 | .DIAPHRAGM | 1 | 1 | | | |
| 17 | 66M-24423-00 | .SPRING, DIAPHRAGM | 1 | 1 | | | |
| 18 | 66M-13131-00 | .PLUNGER | 1 | 1 | | | |
| 19 | 66M-24374-00 | .PIN | 1 | 1 | | | |
| 20 | 66M-24454-00 | .SPRING | 1 | 1 | | | |
| 21 | 66M-24471-01 | .DIAPHRAGM | 1 | 1 | | | |
| 22 | 66M-24444-00 | .SCREW | 4 | 4 | | | |
| 23 | 95380-04600 | .NUT | 4 | 4 | | | |
| 24 | 97095-06030 | BOLT | 2 | 2 | | | |
| 25 | 92995-06100 | WASHER, SPRING | 2 | 2 | | | |
| 26 | 92995-06600 | WASHER | 2 | 2 | | | |
| 27 | 93210-20M65 | O-RING | 1 | 1 | | | |

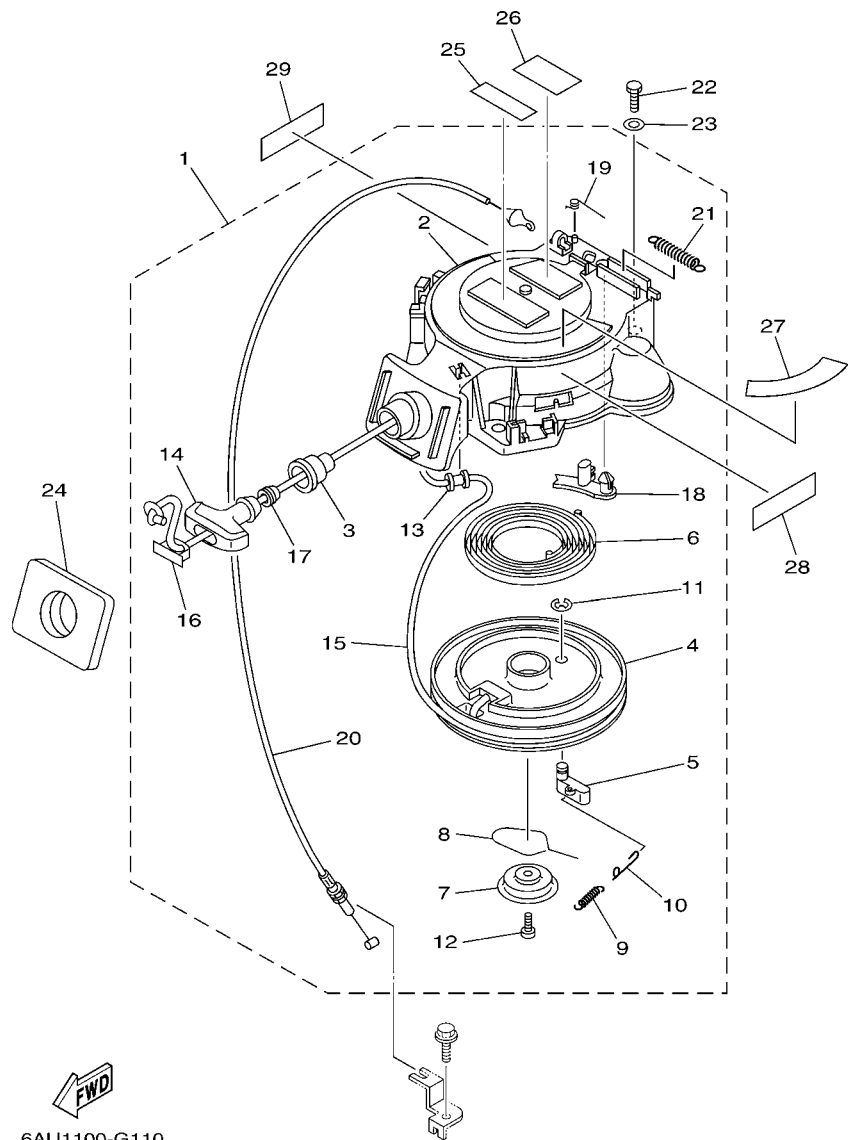


6AU2110-H090

FIG. 9 FUEL

| REF. NO. | PART NO. | DESCRIPTION | MH | EH | | REMARKS |
|----------|--------------|--------------|----|----|--|---------|
| 28 | 6AU-24311-00 | PIPE, FUEL 1 | 1 | 1 | | |
| 29 | 90467-09M09 | CLIP | 2 | 2 | | |
| 30 | 90446-14M66 | HOSE (L40) | 1 | 1 | | |
| 31 | 90465-11M10 | CLAMP | 1 | 1 | | |
| 32 | 90464-10M53 | CLAMP | 1 | 1 | | |
| 33 | 68T-28100-00 | TOOL KIT | 1 | 1 | | AP |
| | | | | | | |
| | | | | | | |
| | | | | | | |
| | | | | | | |
| | | | | | | |
| | | | | | | |
| | | | | | | |
| | | | | | | |

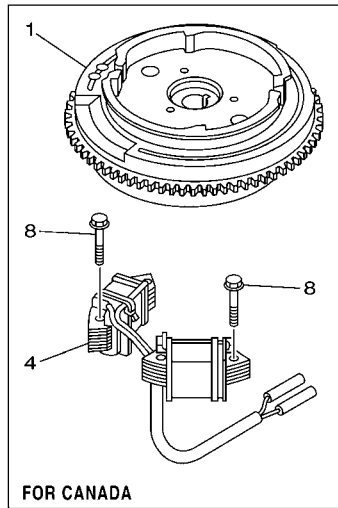
FIG. 10 STARTER



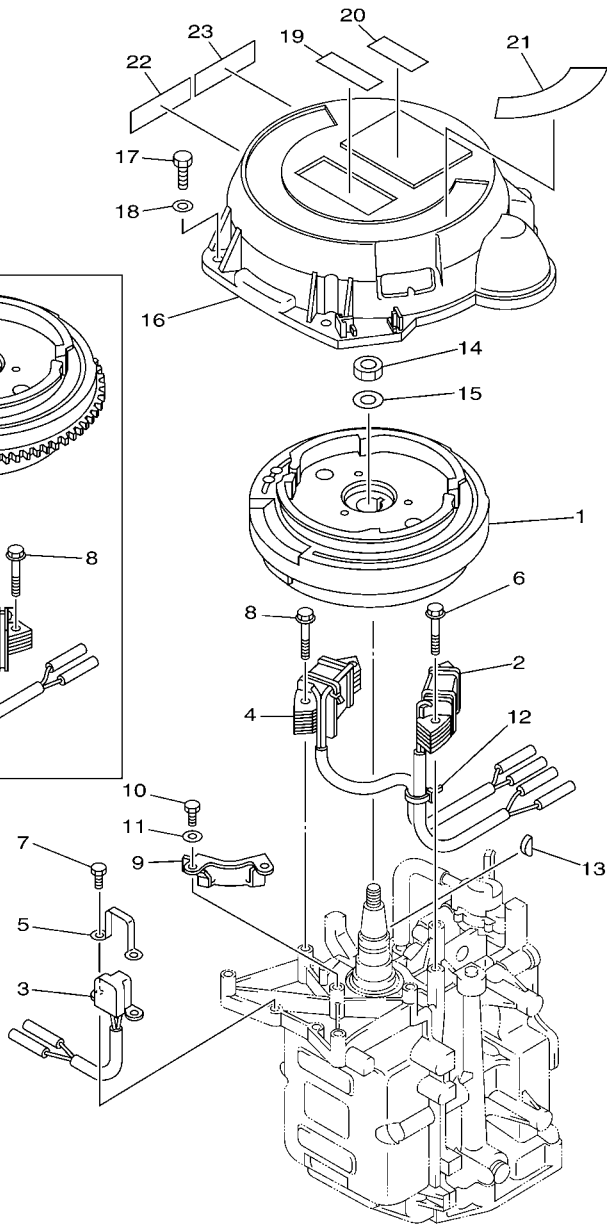
6AU1100-G110

*1: CUT FROM 50M ROLLS, PART NO. 90890-44373, CUTTING LENGTH 1.8M

| REF. NO. | PART NO. | DESCRIPTION | MH | EH | | | REMARKS |
|----------|--------------|----------------------------|----|----|--|--|---------|
| 1 | 68T-15710-13 | STARTER ASSY | 1 | | | | |
| 2 | 68T-15711-03 | .CASE, STARTER | 1 | | | | |
| 3 | 68T-15795-00 | .GUIDE, ROPE | 1 | | | | |
| 4 | 63V-15714-00 | .DRUM, SHEAVE | 1 | | | | |
| 5 | 63V-15741-00 | .PAWL, DRIVE | 1 | | | | |
| 6 | 63V-15713-00 | .SPRING, STARTER | 1 | | | | |
| 7 | 68T-15716-00 | .PLATE, DRIVE | 1 | | | | |
| 8 | 63V-15705-01 | .SPRING, DRIVE PAWL | 1 | | | | |
| 9 | 63V-15767-01 | .SPRING | 1 | | | | |
| 10 | 68T-15784-00 | .SPRING, RETURN | 1 | | | | |
| 11 | 63V-15744-00 | .CIRCLIP | 1 | | | | |
| 12 | 68T-15793-00 | .SCREW | 1 | | | | |
| 13 | 68T-15764-00 | .COLLAR 1 | 1 | | | | |
| 14 | 6G1-15755-00 | .HANDLE, STARTER | 1 | | | | |
| 15 | * | .WIRE, STARTER (L:1800MM) | 1 | | | | *1 |
| 16 | 6G1-15779-00 | .COVER | 1 | | | | |
| 17 | 6A0-15789-00 | .DAMPER | 1 | | | | |
| 18 | 68T-15794-00 | .STOPPER | 1 | | | | |
| 19 | 66T-15734-00 | .SPRING, RETURN | 1 | | | | |
| 20 | 68T-15770-00 | .CABLE COMP., STARTER STOP | 1 | | | | |
| 21 | 66T-15731-00 | .SPRING, RETURN | 1 | | | | |
| 22 | 97095-06020 | BOLT | 3 | | | | |
| 23 | 92995-06600 | WASHER | 3 | | | | |
| 24 | 68T-15762-00 | SEAL, RUBBER 2 | 1 | | | | |
| 25 | 6AH-81995-40 | LABEL, WARNING | 1 | | | | |
| 26 | 6AH-81995-50 | LABEL, WARNING | 1 | | | | FOR CAN |
| 27 | 68T-85711-40 | MARK, CAUTION | 1 | | | | FOR OCE |



FOR CANADA



6AU2100-H110

FIG. 11 GENERATOR

| REF. NO. | PART NO. | DESCRIPTION | MH | EH | | REMARKS |
|----------|--------------|--------------------|----|----|--|---------|
| 1 | 68T-85550-01 | ROTOR ASSY | 1 | | | FOR OCE |
| | 68T-85550-11 | ROTOR ASSY | 1 | 1 | | FOR CAN |
| 2 | 68T-85520-00 | COIL, CHARGE | 1 | 1 | | |
| 3 | 68T-85580-01 | COIL, PULSER | 1 | 1 | | |
| 4 | 68T-85533-00 | COIL, LIGHTING | 1 | | | FOR OCE |
| | 68T-85533-10 | COIL, LIGHTING | 1 | 1 | | FOR CAN |
| 5 | 6H2-85582-00 | ATTACHMENT, PULSER | 1 | 1 | | |
| 6 | 90119-06014 | BOLT, WITH WASHER | 2 | 2 | | |
| 7 | 97095-05010 | BOLT | 2 | 2 | | |
| 8 | 90119-06MA1 | BOLT, WITH WASHER | 2 | | | FOR OCE |
| | 90119-06MA1 | BOLT, WITH WASHER | 4 | 4 | | FOR CAN |
| 9 | 68T-81328-00 | CLAMP | 1 | | | FOR OCE |
| 10 | 97013-06012 | BOLT | 2 | | | FOR OCE |
| 11 | 92903-06600 | WASHER, PLATE | 2 | | | FOR OCE |
| 12 | 90465-11M10 | CLAMP | 1 | 1 | | |
| 13 | 90280-04M06 | KEY, WOODRUFF | 1 | 1 | | |
| 14 | 90170-12066 | NUT | 1 | 1 | | |
| 15 | 90201-12472 | WASHER, PLATE | 1 | 1 | | |
| 16 | 6AV-81337-00 | COVER, FLYWHEEL | | 1 | | |
| 17 | 97095-06020 | BOLT | | 3 | | |
| 18 | 92995-06600 | WASHER | | 3 | | |
| 19 | 6AH-81995-40 | LABEL, WARNING | | 1 | | |
| 20 | 6AH-81995-50 | LABEL, WARNING | | 1 | | |
| 21 | 68T-85711-50 | MARK, CAUTION | | 1 | | |
| 22 | 6AH-81994-40 | LABEL, SAFETY | | 1 | | |
| 23 | 6AH-81994-50 | LABEL, SAFETY | | 1 | | |

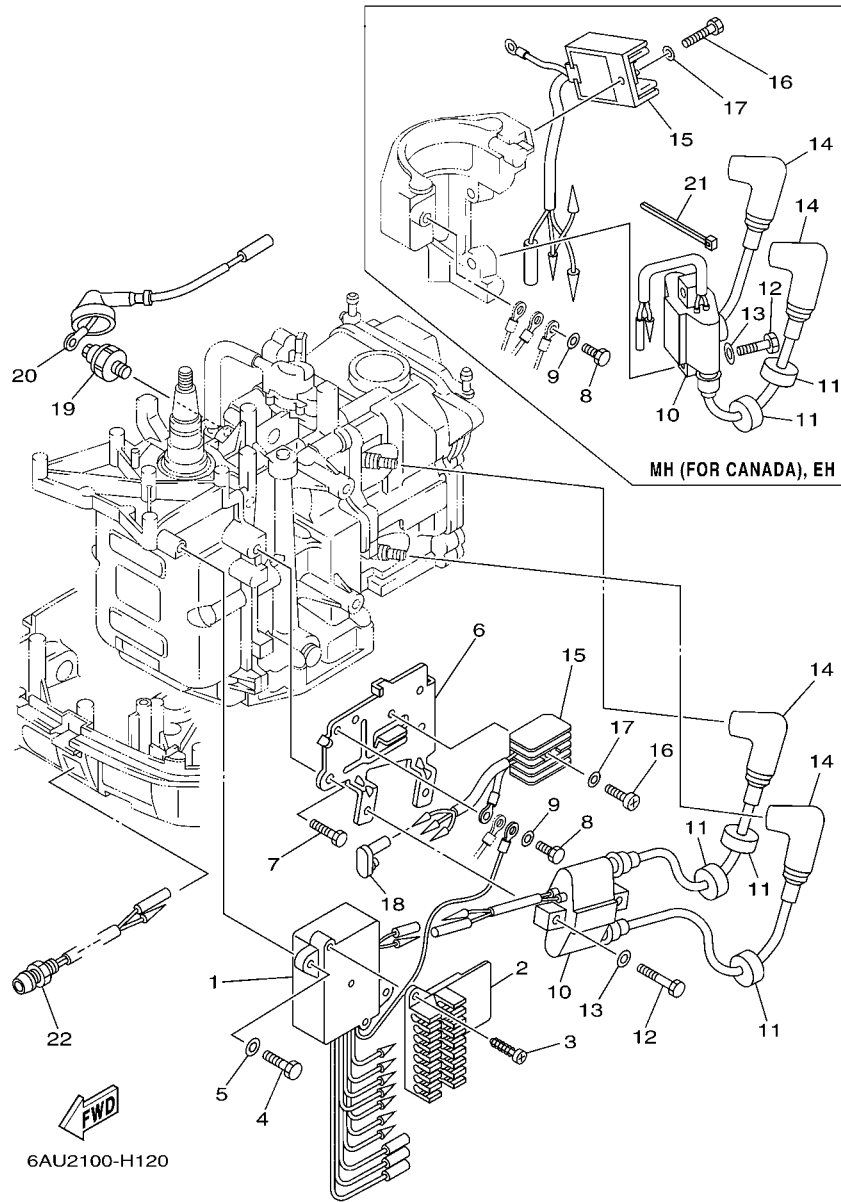
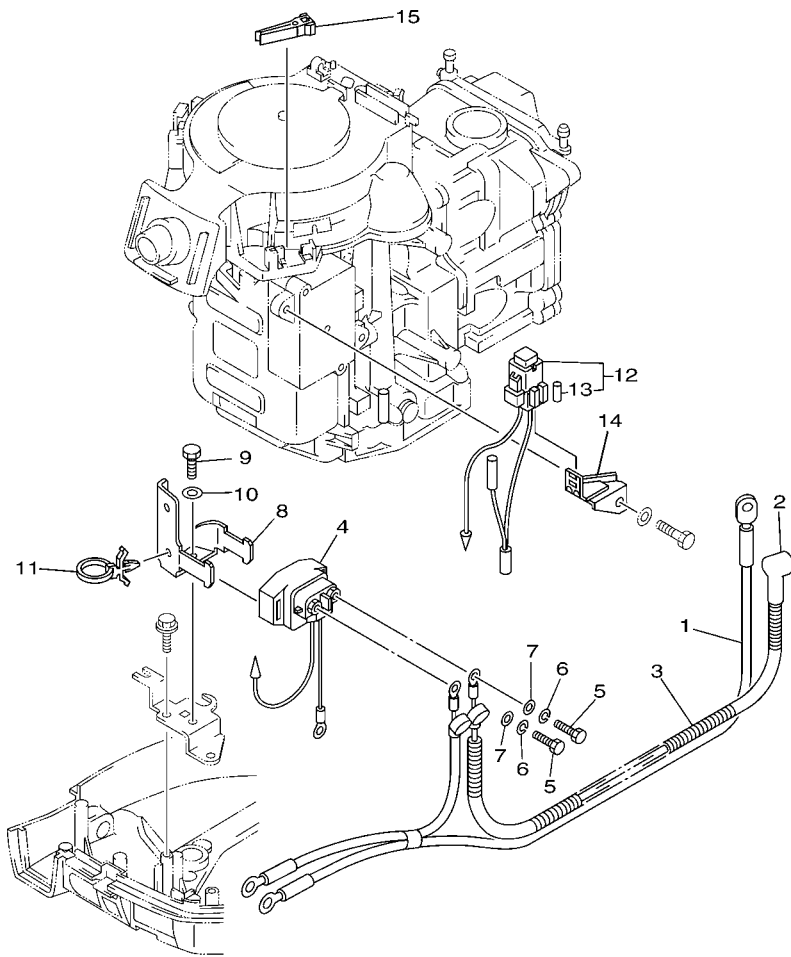


FIG. 12 ELECTRICAL 1

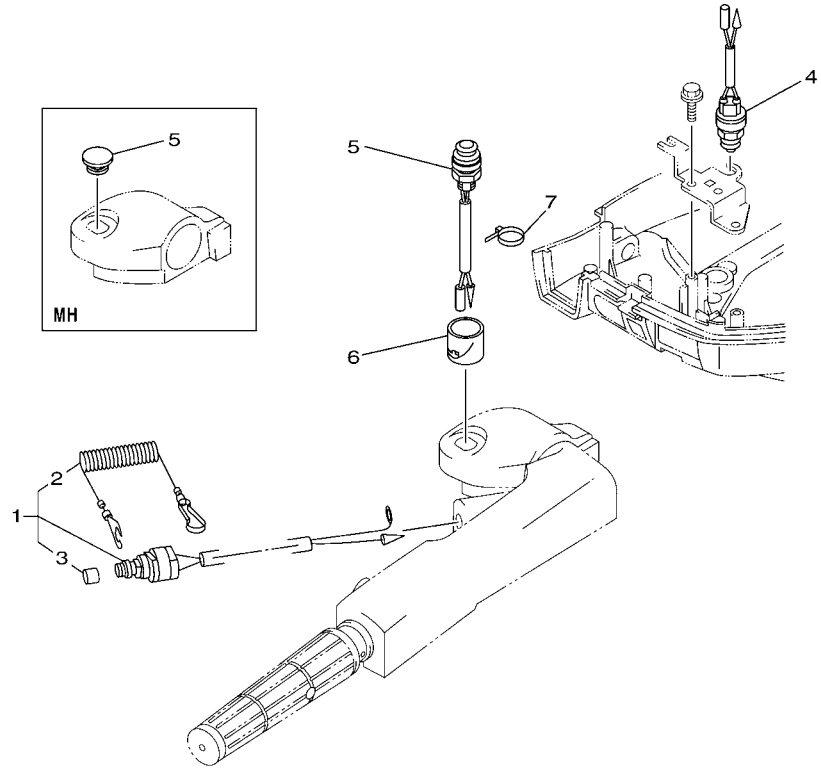
| REF. NO. | PART NO. | DESCRIPTION | MH | EH | | REMARKS |
|----------|--------------|-----------------------------|----|----|--|---------|
| 1 | 68T-85540-00 | C.D.I. UNIT ASSY | 1 | 1 | | |
| 2 | 68T-82522-00 | CLAMP, COUPLER | 1 | 1 | | |
| 3 | 97780-40512 | SCREW, TAPPING | 2 | 2 | | |
| 4 | 97095-06020 | BOLT | 2 | 2 | | |
| 5 | 92995-06600 | WASHER | 2 | 2 | | |
| 6 | 68T-85542-00 | BRACKET | 1 | | | FOR OCE |
| 7 | 97095-08012 | BOLT | 2 | | | FOR OCE |
| 8 | 97095-06012 | BOLT | 1 | 1 | | |
| 9 | 92995-06600 | WASHER | 1 | 1 | | |
| 10 | 680-85570-01 | IGNITION COIL ASSY | 1 | 1 | | |
| 11 | 90480-25003 | GROMMET | 3 | 3 | | |
| 12 | 97095-06025 | BOLT | 2 | 2 | | |
| 13 | 92995-06600 | WASHER | 2 | 2 | | |
| 14 | 6E3-82370-21 | PLUG CAP ASSY | 2 | 2 | | |
| 15 | 664-81970-62 | RECTIFIER ASSY | 1 | | | FOR OCE |
| | 68T-81960-00 | RECTIFIER & REGULATOR ASSY | 1 | | | |
| 16 | 97880-05025 | SCREW, PAN HEAD | 1 | | | FOR OCE |
| | 97095-06012 | BOLT | | 1 | | |
| 17 | 92990-05600 | WASHER, PLATE | 1 | | | FOR OCE |
| | 92995-06600 | WASHER | | 1 | | |
| 18 | 6A0-82119-00 | COVER, LEAD WIRE | 1 | | | FOR OCE |
| 19 | 67F-82504-00 | OIL PRESSURE SWITCH ASSY | 1 | 1 | | |
| 20 | 68T-82127-10 | WIRE, LEAD 2 | 1 | 1 | | |
| 21 | 90465-11M10 | CLAMP | 1 | 1 | | FOR CAN |
| 22 | 68T-85410-00 | EMERGENCY SIGNAL LIGHT ASSY | 1 | 1 | | |



FWD
6AU1010-G130

FIG. 13 ELECTRICAL 2

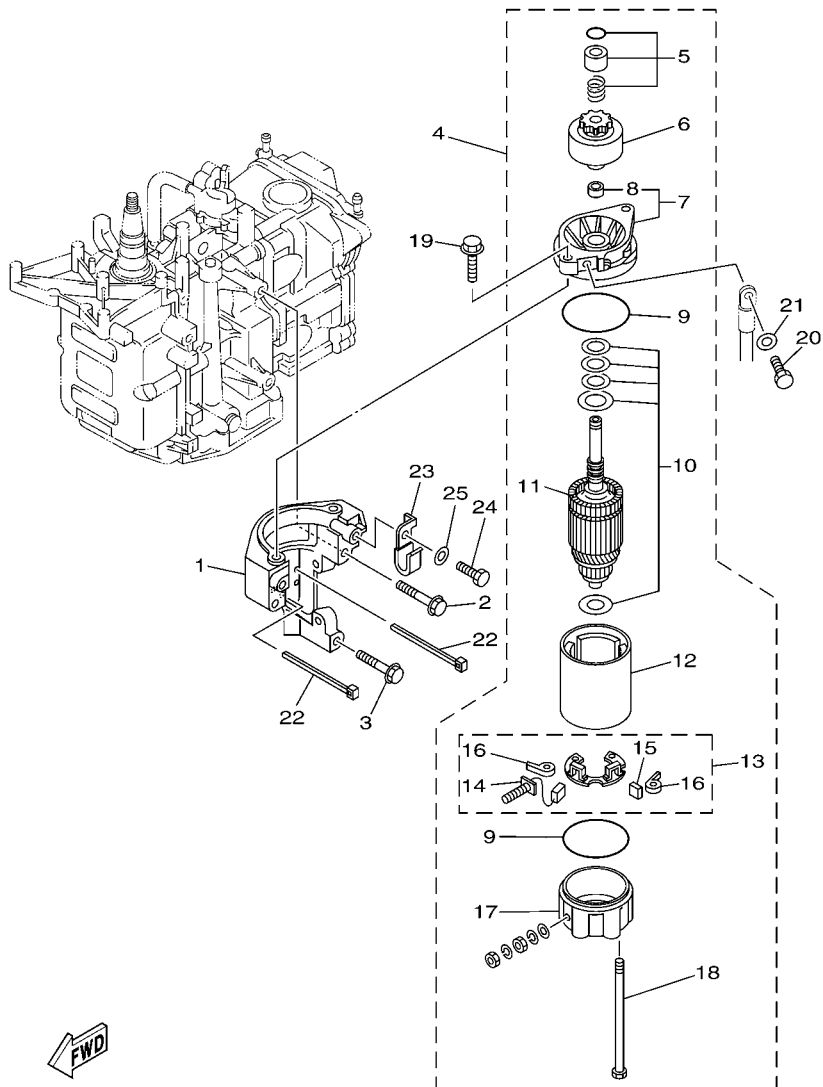
| REF. NO. | PART NO. | DESCRIPTION | MH | EH | REMARKS |
|----------|--------------|------------------------|----|----|---------|
| 1 | 69G-82105-00 | WIRE HARNESS (L: 3.0M) | | 1 | |
| 2 | 6G8-82117-00 | WIRE, LEAD | | 1 | |
| 3 | 90446-10M86 | HOSE (L140) | | 1 | |
| 4 | 68T-81940-00 | STARTER RELAY ASSY | | 1 | |
| 5 | 97095-06010 | BOLT | | 2 | |
| 6 | 92995-06100 | WASHER, SPRING | | 2 | |
| 7 | 92995-06600 | WASHER | | 2 | |
| 8 | 68T-81945-01 | PLATE, SWITCH FITTING | | 1 | |
| 9 | 97095-06012 | BOLT | | 1 | |
| 10 | 92995-06600 | WASHER | | 1 | |
| 11 | 90465-12M56 | CLAMP | | 1 | |
| 12 | 68T-82150-00 | FUSE HOLDER ASSY | | 1 | |
| 13 | 66V-82151-00 | .FUSE (10A-BL) | | 2 | |
| 14 | 68T-82171-01 | STAY, FUSE BOX | | 1 | |
| 15 | 67F-2812A-00 | PULLER, FUSE | | 1 | |




 6AU2100-H140

FIG. 14 ELECTRICAL 3

| REF. NO. | PART NO. | DESCRIPTION | MH | EH | | | REMARKS |
|----------|--------------|-------------------------|----|----|--|--|---------|
| 1 | 65W-82575-01 | ENGINE STOP SWITCH ASSY | 1 | 1 | | | |
| 2 | 682-82556-00 | .LANYARD, STOP SWITCH | 1 | 1 | | | |
| 3 | 689-8257Y-00 | .CAP | 1 | 1 | | | |
| 4 | 6F5-82540-01 | NEUTRAL SWITCH ASSY | | 1 | | | |
| 5 | 6G1-42725-00 | GROMMET | 1 | | | | |
| 6 | 68T-81821-00 | COVER, SWITCH | | 1 | | | |
| 7 | 90465-11M10 | CLAMP | | 1 | | | |
| | 68T-81870-00 | STARTING SWITCH ASSY | | 1 | | | |
| | | | | | | | |
| | | | | | | | |
| | | | | | | | |
| | | | | | | | |
| | | | | | | | |
| | | | | | | | |
| | | | | | | | |
| | | | | | | | |
| | | | | | | | |
| | | | | | | | |
| | | | | | | | |
| | | | | | | | |
| | | | | | | | |
| | | | | | | | |
| | | | | | | | |
| | | | | | | | |
| | | | | | | | |
| | | | | | | | |
| | | | | | | | |
| | | | | | | | |
| | | | | | | | |

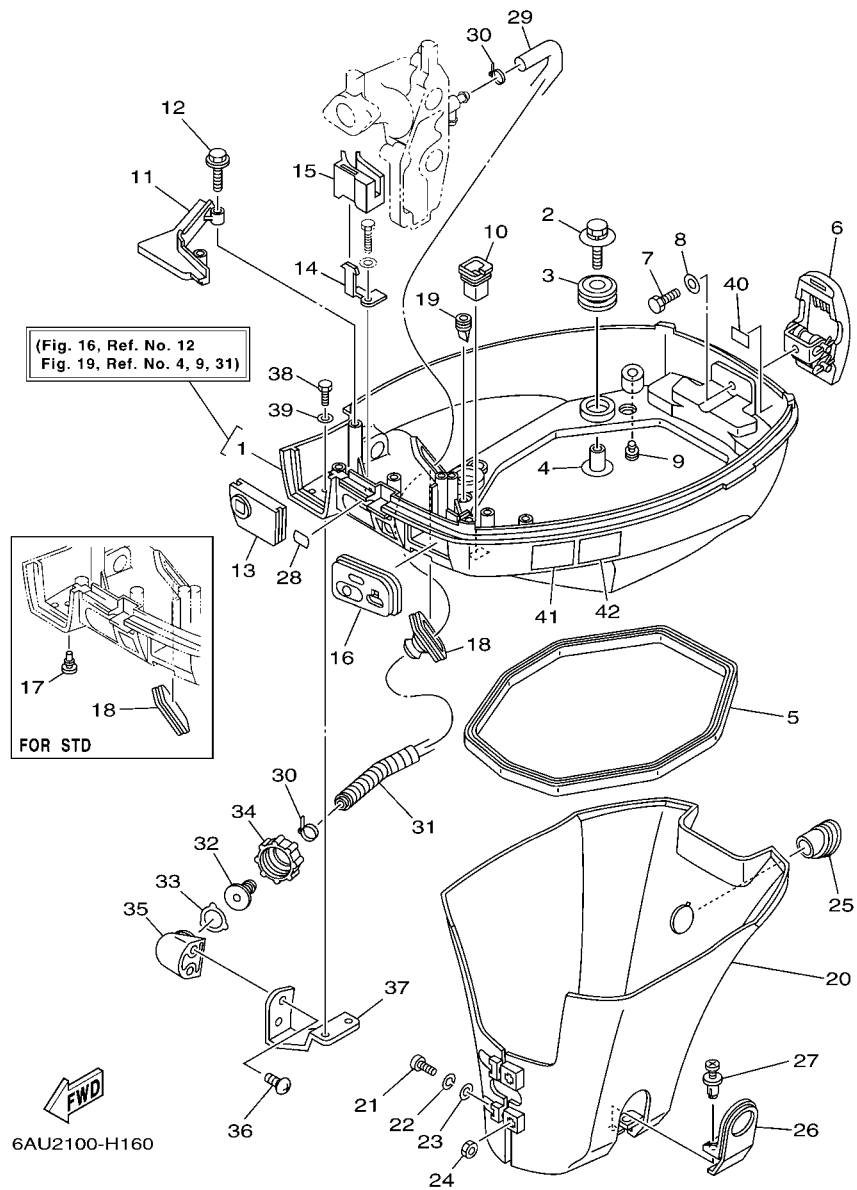


6AU1100-G160

FIG. 15 STARTING MOTOR

| REF. NO. | PART NO. | DESCRIPTION | MH | EH | | REMARKS |
|----------|-----------------|----------------------------|----|----|--|---------|
| 1 | 68T-81822-01-94 | BRACKET, STARTING MOTOR | 1 | 1 | | FOR CAN |
| 2 | 90119-08046 | BOLT, WITH WASHER | 2 | 2 | | FOR CAN |
| 3 | 90119-08020 | BOLT, WITH WASHER | 1 | 1 | | FOR CAN |
| 4 | 68T-81800-00 | STARTING MOTOR ASSY | | 1 | | |
| 5 | 68T-81857-00 | .RETAINER | | 1 | | |
| 6 | 689-81807-12 | .GEAR ASSY, STARTING MOTOR | | 1 | | |
| 7 | 6F5-81830-10 | .FRONT BRACKET ASSY | | 1 | | |
| 8 | 689-81831-00 | ..METAL, FRONT | | 1 | | |
| 9 | 689-81847-11 | .O-RING | | 2 | | |
| 10 | 689-81809-11 | .WASHER KIT | | 1 | | |
| 11 | 689-81850-11 | .ARMATURE ASSY | | 1 | | |
| 12 | 689-81810-11 | .STATOR ASSY | | 1 | | |
| 13 | 689-81840-11 | .BRUSH HOLDER ASSY | | 1 | | |
| 14 | 689-81811-11 | ..BRUSH 1 | | 1 | | |
| 15 | 689-81812-11 | ..BRUSH 2 | | 1 | | |
| 16 | 689-81813-10 | ..SPRING, BRUSH | | 2 | | |
| 17 | 689-81820-11 | .REAR BRACKET ASSY | | 1 | | |
| 18 | 689-81826-10 | .BOLT | | 2 | | |
| 19 | 90119-08M76 | BOLT, WITH WASHER | | 2 | | |
| 20 | 97095-08016 | BOLT | | 1 | | |
| 21 | 92995-08600 | WASHER | | 1 | | |
| 22 | 90465-11M10 | CLAMP | | 2 | | |
| 23 | 90465-08M99 | CLAMP | 1 | 1 | | FOR CAN |
| 24 | 97095-06012 | BOLT | 1 | 1 | | FOR CAN |
| 25 | 92995-06600 | WASHER | 1 | 1 | | FOR CAN |

FIG. 16 BOTTOM COWLING



| REF. NO. | PART NO. | DESCRIPTION | MH | EH | REMARKS |
|----------|-----------------|---------------------|----|----|-------------------|
| 1 | 68T-42710-01-4D | BOTTOM COWLING ASSY | 1 | 1 | WITH TAPPING BOLT |
| 2 | 68F-85119-00 | BOLT | 4 | 4 | |
| 3 | 90480-21M82 | GROMMET | 4 | 4 | |
| 4 | 90387-06176 | COLLAR | 4 | 4 | |
| 5 | 68T-42716-10 | RUBBER, SEAL 1 | 1 | 1 | |
| 6 | 6AU-42801-00 | COWLING CLAMP COMP. | 1 | 1 | |
| 7 | 97095-06012 | BOLT | 1 | 1 | |
| 8 | 92995-06600 | WASHER | 1 | 1 | |
| 9 | 6H3-44391-01 | NIPPLE, HOSE | 1 | 1 | |
| 10 | 682-42727-00 | GROMMET | 1 | 1 | |
| 11 | 68T-42738-00-4D | PLATE, FITTING | 1 | 1 | |
| 12 | 90109-06M81 | BOLT | 2 | 2 | |
| 13 | 68T-42725-00 | GROMMET | 1 | 1 | |
| 14 | 68T-26393-00 | HOLDER | 1 | 1 | |
| 15 | 68T-26367-00 | PROTECTOR | 1 | 1 | |
| 16 | 68T-42724-20 | GROMMET | 1 | | |
| | 68T-42724-30 | GROMMET | | 1 | |
| 17 | 90480-06M19 | GROMMET | 2 | | STD (FOR OCE) |
| 18 | 688-42726-10 | GROMMET | 1 | 1 | FLUSHING KIT |
| | 6H4-42726-00 | GROMMET | 1 | | STD (FOR OCE) |
| 19 | 65W-42717-00 | RUBBER, SEAL 2 | 2 | 2 | |
| 20 | 68T-42741-00 | APRON | 1 | 1 | |
| 21 | 97885-06030 | SCREW, PAN HEAD | 2 | 2 | |
| 22 | 92995-06100 | WASHER, SPRING | 2 | 2 | |
| 23 | 92995-06600 | WASHER | 2 | 2 | |
| 24 | 95380-06600 | NUT, HEXAGON | 2 | 2 | |
| 25 | 68T-42717-00 | RUBBER, SEAL 2 | 1 | 1 | |

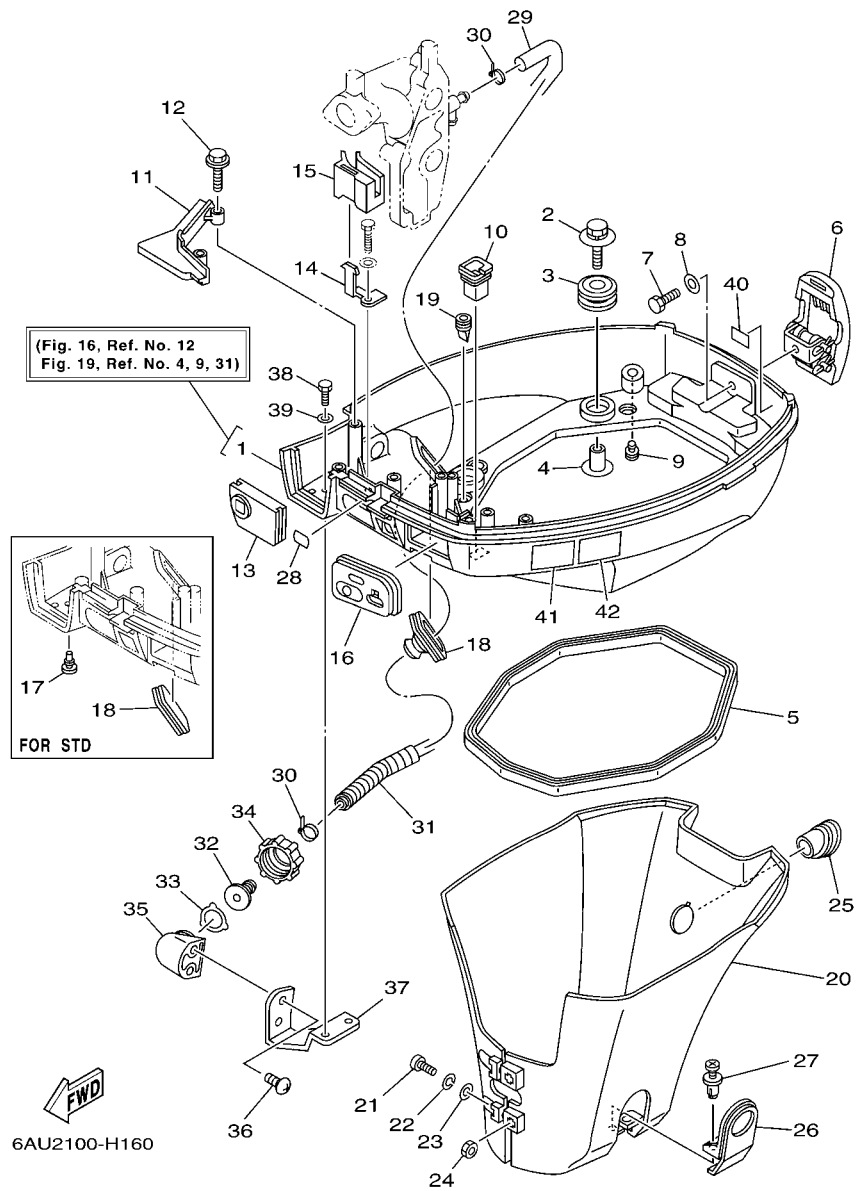


FIG. 16 BOTTOM COWLING

| REF. NO. | PART NO. | DESCRIPTION | MH | EH | | REMARKS |
|----------|--------------|--------------------------|----|----|--|--------------|
| 26 | 68T-42771-00 | APRON | 1 | 1 | | |
| 27 | 90338-06M20 | PLUG | 2 | 2 | | |
| 28 | 65W-84342-00 | SEAT, EMBLEM | 1 | 1 | | |
| 29 | 6E5-12481-00 | PIPE 1 | 1 | 1 | | FLUSHING KIT |
| 30 | 90465-11M10 | CLAMP | 2 | 2 | | FLUSHING KIT |
| 31 | 90447-13M00 | TUBE | 1 | 1 | | FLUSHING KIT |
| 32 | 6R3-12582-00 | JOINT, HOSE 2 | 1 | 1 | | FLUSHING KIT |
| 33 | 6R3-12583-00 | GASKET, HOSE JOINT | 1 | 1 | | FLUSHING KIT |
| 34 | 6R3-12581-00 | JOINT, HOSE 1 | 1 | 1 | | FLUSHING KIT |
| 35 | 68T-12572-00 | ADAPTER | 1 | 1 | | FLUSHING KIT |
| 36 | 90167-06002 | SCREW, TAPPING | 2 | 2 | | FLUSHING KIT |
| 37 | 68T-12535-00 | PLATE | 1 | 1 | | FLUSHING KIT |
| 38 | 97095-06012 | BOLT | 2 | 2 | | FLUSHING KIT |
| 39 | 92995-06600 | WASHER | 2 | 2 | | FLUSHING KIT |
| 40 | 6H8-42791-10 | MARK 1 | 1 | 1 | | |
| 41 | 6AH-42794-40 | LABEL, WARNING (GENERAL) | 1 | 1 | | |
| 42 | 6AH-42794-50 | LABEL, WARNING (GENERAL) | 1 | 1 | | FOR CAN |

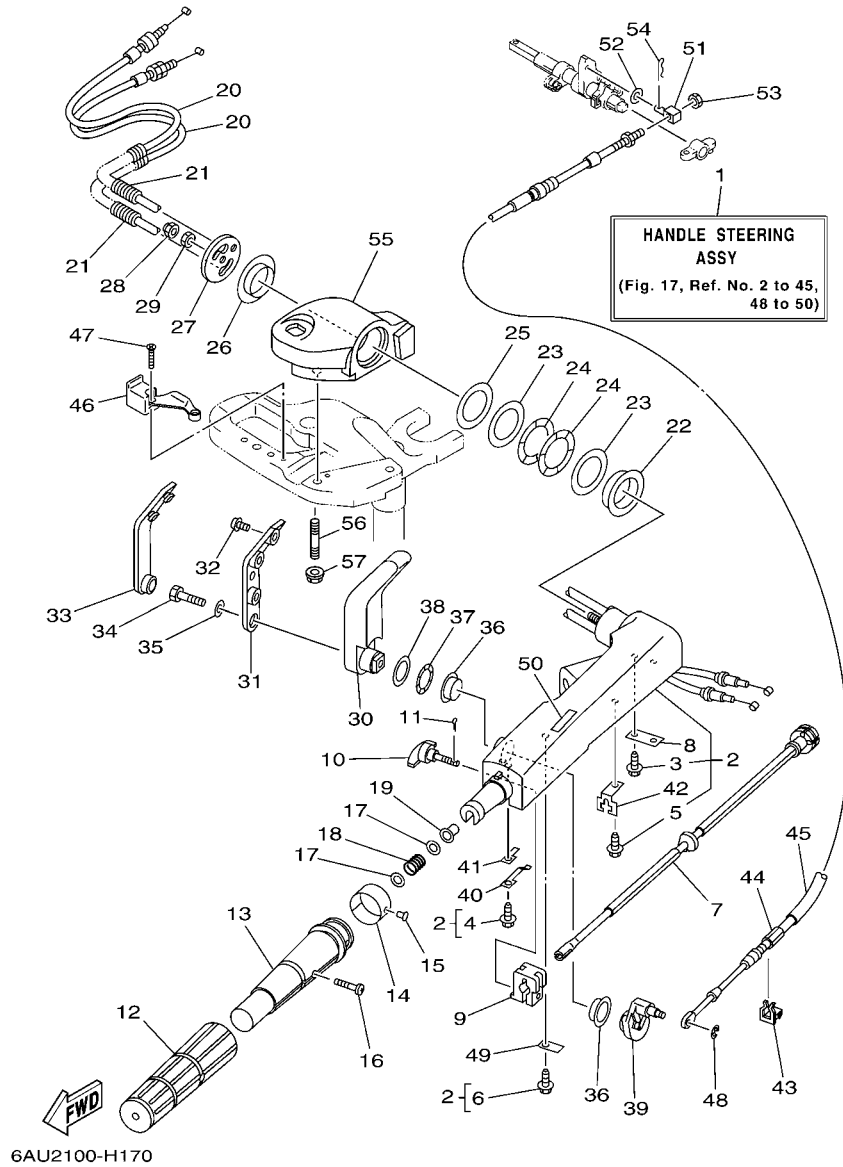


FIG. 17 STEERING

| REF. NO. | PART NO. | DESCRIPTION | MH | EH | REMARKS |
|----------|-----------------|--------------------------------|----|----|---------|
| 1 | 68T-W0084-10-4D | HANDLE STEERING ASSY | 1 | 1 | |
| 2 | 66R-42101-01-4D | HANDLE, STEERING | 1 | 1 | |
| 3 | 90109-06M86 | .BOLT | 2 | 2 | |
| 4 | 90109-06M80 | .BOLT | 1 | 1 | |
| 5 | 90109-06M80 | .BOLT | 1 | 1 | |
| 6 | 90109-06M80 | .BOLT | 1 | 1 | |
| 7 | 68T-42138-01 | LEVER, THROTTLE | 1 | 1 | |
| 8 | 65W-42159-00 | STAY | 1 | 1 | |
| 9 | 6G1-42126-00 | FRICTION, STEERING HANDLE GRIP | 1 | 1 | |
| 10 | 65W-42125-00 | BOLT, FRICTION ADJUSTING | 1 | 1 | |
| 11 | 91490-16010 | PIN, COTTER | 1 | 1 | |
| 12 | 67D-42177-00 | RUBBER, HANDLE | 1 | 1 | |
| 13 | 67D-42119-00 | GRIP, STEERING HANDLE | 1 | 1 | |
| 14 | 6AU-42137-00 | INDICATOR, THROTTLE | 1 | 1 | |
| 15 | 90269-02M09 | RIVET | 1 | 1 | |
| 16 | 90149-05M13 | SCREW | 1 | 1 | |
| 17 | 90201-10M02 | WASHER, PLATE | 2 | 2 | |
| 18 | 90501-23215 | SPRING, COMPRESSION | 1 | 1 | |
| 19 | 90386-08032 | BUSH | 1 | 1 | |
| 20 | 68T-26301-11 | THROTTLE CABLE ASSY | 2 | 2 | |
| 21 | 90447-07005 | TUBE | 2 | 2 | |
| 22 | 66R-42171-00 | BUSHING | 1 | 1 | |
| 23 | 90201-43M00 | WASHER, PLATE | 2 | 2 | |
| 24 | 90206-43M22 | WASHER, WAVE | 2 | 2 | |
| 25 | 90202-43M57 | WASHER, PLATE | 1 | 1 | |
| 26 | 90386-40M99 | BUSH | 1 | 1 | |
| 27 | 66M-42131-01 | COVER, HANDLE STEERING | 1 | 1 | |

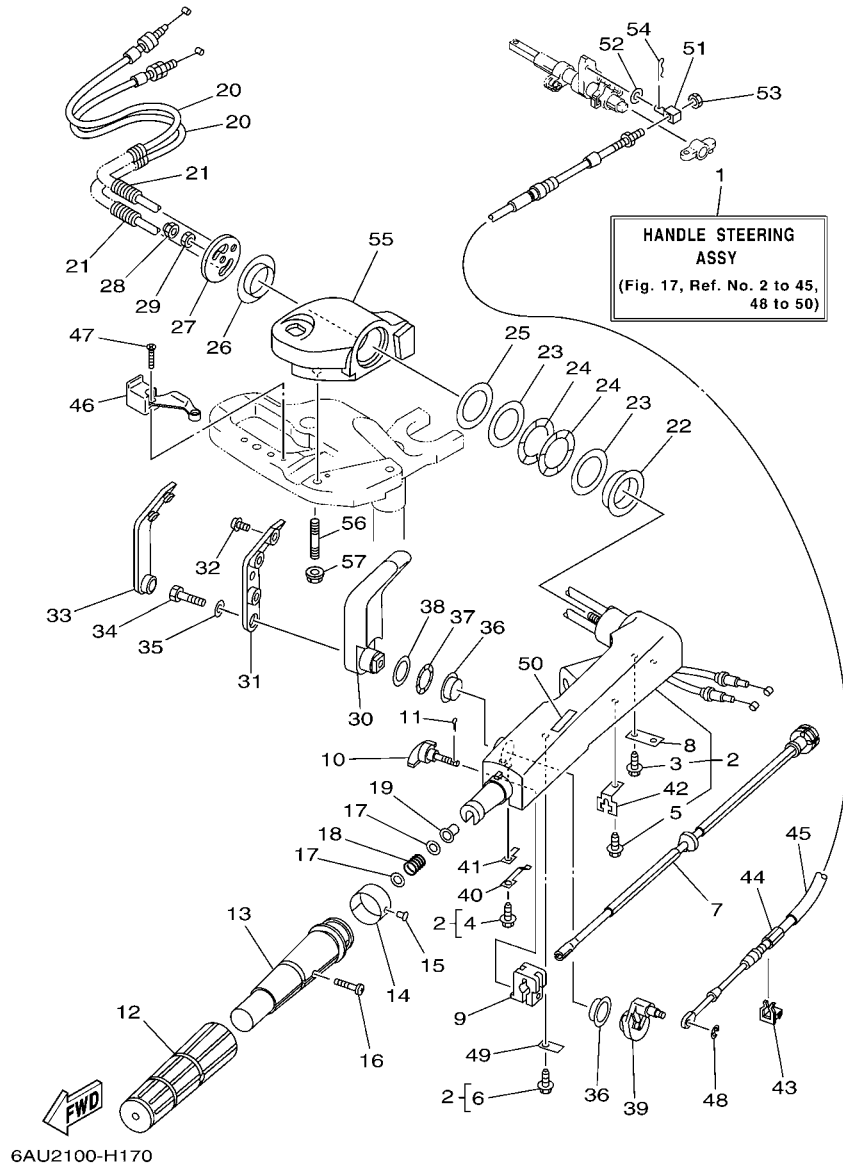


FIG. 17 STEERING

| REF. NO. | PART NO. | DESCRIPTION | MH | EH | | | REMARKS |
|----------|-----------------|---------------------------|----|----|--|--|---------|
| 28 | 95780-10300 | NUT, FLANGE | 1 | 1 | | | |
| 29 | 95380-10700 | NUT | 1 | 1 | | | |
| 30 | 66R-44111-00-4D | HANDLE, GEAR SHIFT | 1 | 1 | | | |
| 31 | 66R-44173-00 | LEVER, SHIFT CONTROL | 1 | 1 | | | |
| 32 | 90159-06M18 | SCREW, WITH WASHER | 3 | 3 | | | |
| 33 | 66R-42129-00 | BUSHING, RUBBER | 1 | 1 | | | |
| 34 | 97095-08030 | BOLT | 1 | 1 | | | |
| 35 | 92995-08600 | WASHER | 1 | 1 | | | |
| 36 | 90386-26MA3 | BUSH | 2 | 2 | | | |
| 37 | 90206-26M25 | WASHER, WAVE | 1 | 1 | | | |
| 38 | 90202-26M59 | WASHER, PLATE | 1 | 1 | | | |
| 39 | 68T-44113-01 | CAM PLATE, HANDLE | 1 | 1 | | | |
| 40 | 66R-44116-00 | SPRING | 1 | 1 | | | |
| 41 | 66R-44118-00 | BRACKET | 1 | 1 | | | |
| 42 | 66R-48538-00 | CLAMP, CABLE 1 | 1 | 1 | | | |
| 43 | 63D-48538-00 | CLAMP, CABLE 1 | 1 | 1 | | | |
| 44 | 68T-48321-01 | CABLE | 1 | 1 | | | |
| 45 | 90446-15002 | HOSE | 1 | 1 | | | |
| 46 | 68T-82594-10 | CLAMP | 1 | 1 | | | |
| 47 | 90151-05003 | SCREW, COUNTERSUNK | 2 | 2 | | | |
| 48 | 99080-04600 | CIRCLIP | 1 | 1 | | | |
| 49 | 66R-44114-00 | STOPPER | 1 | 1 | | | |
| 50 | 6E0-44191-11 | INDICATOR, SHIFT | 1 | 1 | | | |
| 51 | 66R-48344-00 | CABLE END, REMOTE CONTROL | 1 | 1 | | | |
| 52 | 90201-06M62 | WASHER, PLATE | 1 | 1 | | | |
| 53 | 90170-05M38 | NUT | 1 | 1 | | | |
| 54 | 91490-20012 | PIN, COTTER | 1 | 1 | | | |

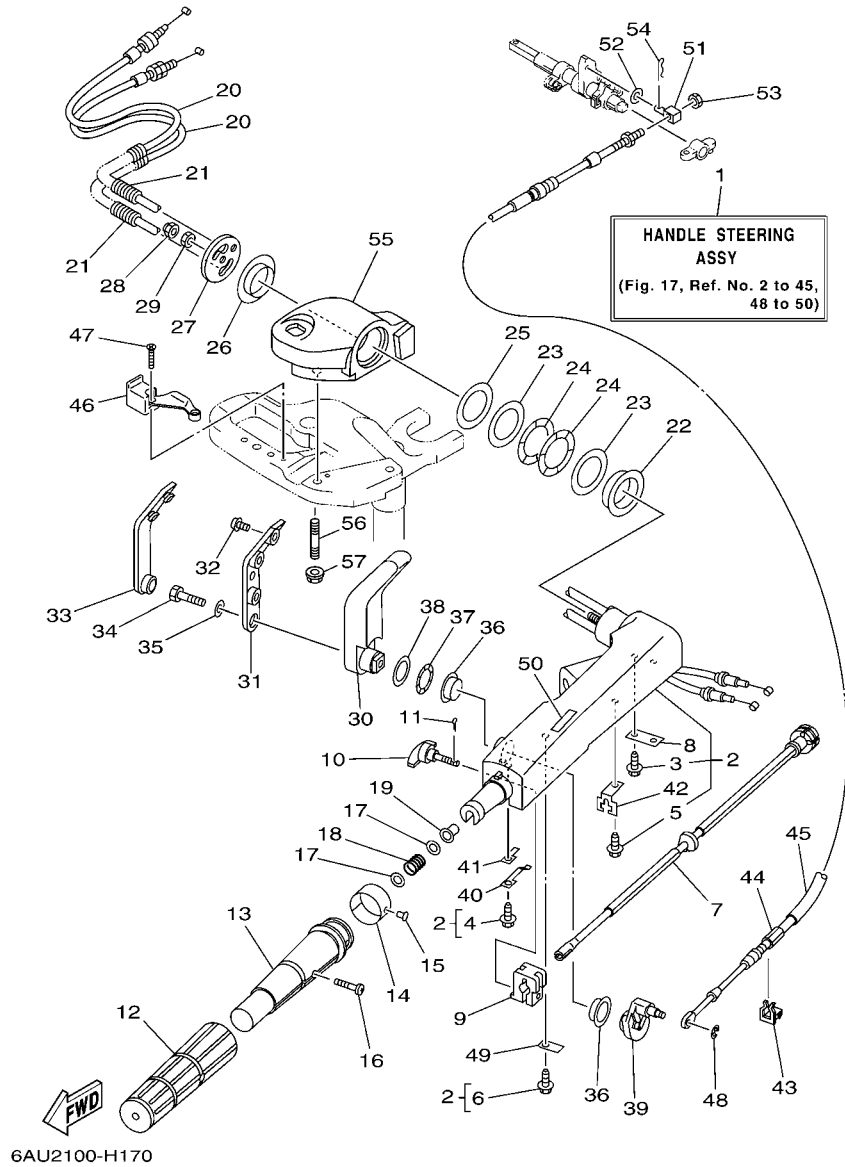
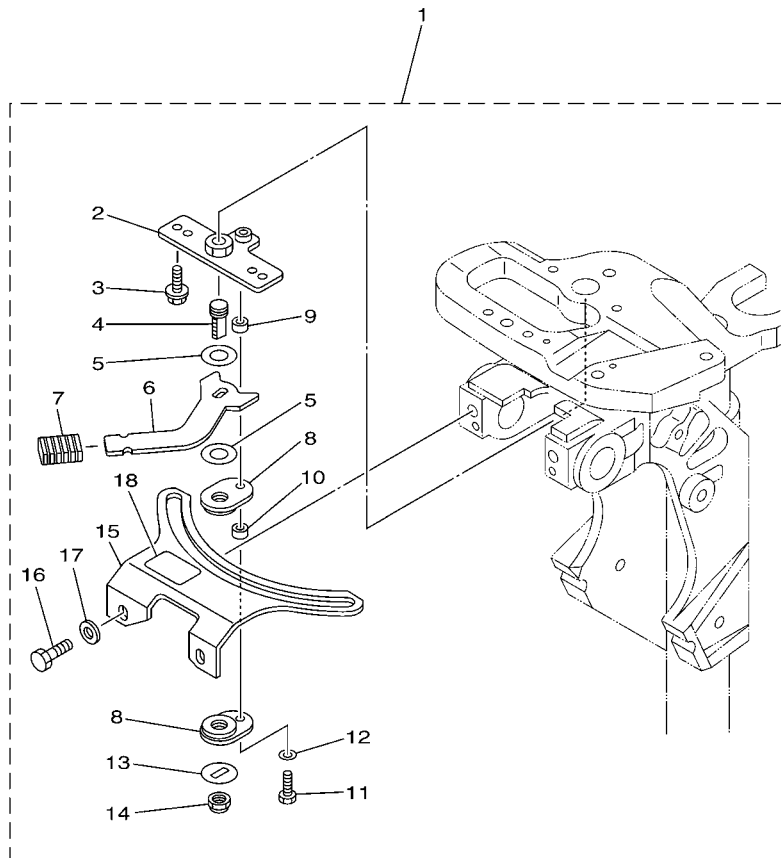


FIG. 17 STEERING

| REF. NO. | PART NO. | DESCRIPTION | MH | EH | | | REMARKS |
|----------|-----------------|-------------|----|----|--|--|---------|
| 55 | 6AU-42121-10-4D | BRACKET | 1 | 1 | | | |
| 56 | 90116-10040 | BOLT, STUD | 2 | 2 | | | |
| 57 | 90179-10M33 | NUT | 2 | 2 | | | |
| ----- | | | | | | | |
| ----- | | | | | | | |
| ----- | | | | | | | |
| ----- | | | | | | | |
| ----- | | | | | | | |
| ----- | | | | | | | |
| ----- | | | | | | | |
| ----- | | | | | | | |
| ----- | | | | | | | |
| ----- | | | | | | | |




6AU1100-G190

FIG. 18 STEERING FRICTION

| REF. NO. | PART NO. | DESCRIPTION | MH | EH | | | REMARKS |
|----------|--------------|------------------------|----|----|--|--|---------|
| 1 | 6AH-42508-00 | STEERING FRICTION ASSY | 1 | 1 | | | |
| 2 | 68T-42525-01 | .PLATE, FRICTION | 1 | 1 | | | |
| 3 | 90119-05018 | .BOLT, WITH WASHER | 2 | 2 | | | |
| 4 | 67C-42562-00 | .SHAFT, STEERING LOCK | 1 | 1 | | | |
| 5 | 90202-10M56 | .WASHER, PLATE | 2 | 2 | | | |
| 6 | 68T-42561-00 | .KNOB, STEERING LOCK | 1 | 1 | | | |
| 7 | 689-43633-00 | .COVER, TILT LEVER | 1 | 1 | | | |
| 8 | 65W-42528-00 | .PLATE, FRICTION | 2 | 2 | | | |
| 9 | 90387-05M05 | .COLLAR | 1 | 1 | | | |
| 10 | 90387-05M11 | .COLLAR | 1 | 1 | | | |
| 11 | 97095-05020 | .BOLT | 1 | 1 | | | |
| 12 | 92995-05600 | .WASHER | 1 | 1 | | | |
| 13 | 90209-10M26 | .WASHER | 1 | 1 | | | |
| 14 | 90185-10M14 | .NUT, SELF-LOCKING | 1 | 1 | | | |
| 15 | 6AH-42527-00 | .PLATE, FRICTION | 1 | 1 | | | |
| 16 | 90101-08022 | .BOLT | 2 | 2 | | | |
| 17 | 90201-08065 | .WASHER, PLATE | 2 | 2 | | | |
| 18 | 68T-43155-00 | .MARK 1 | 1 | 1 | | | |

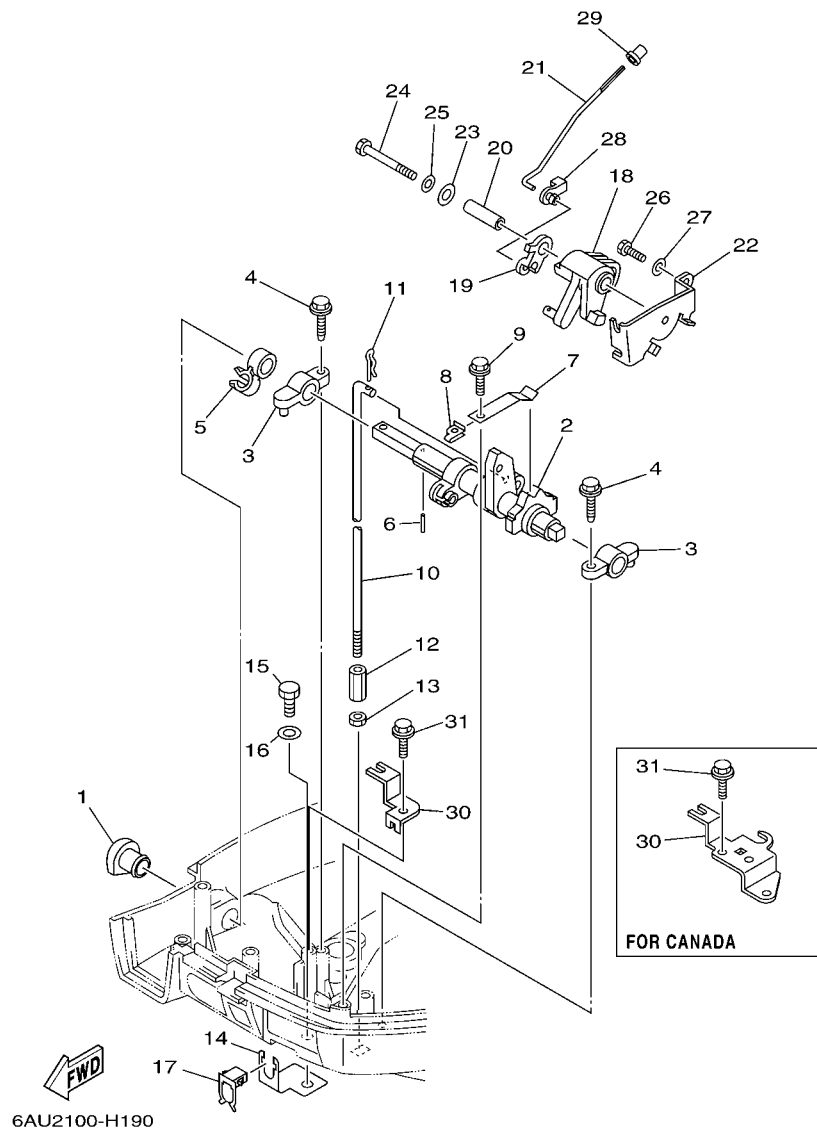
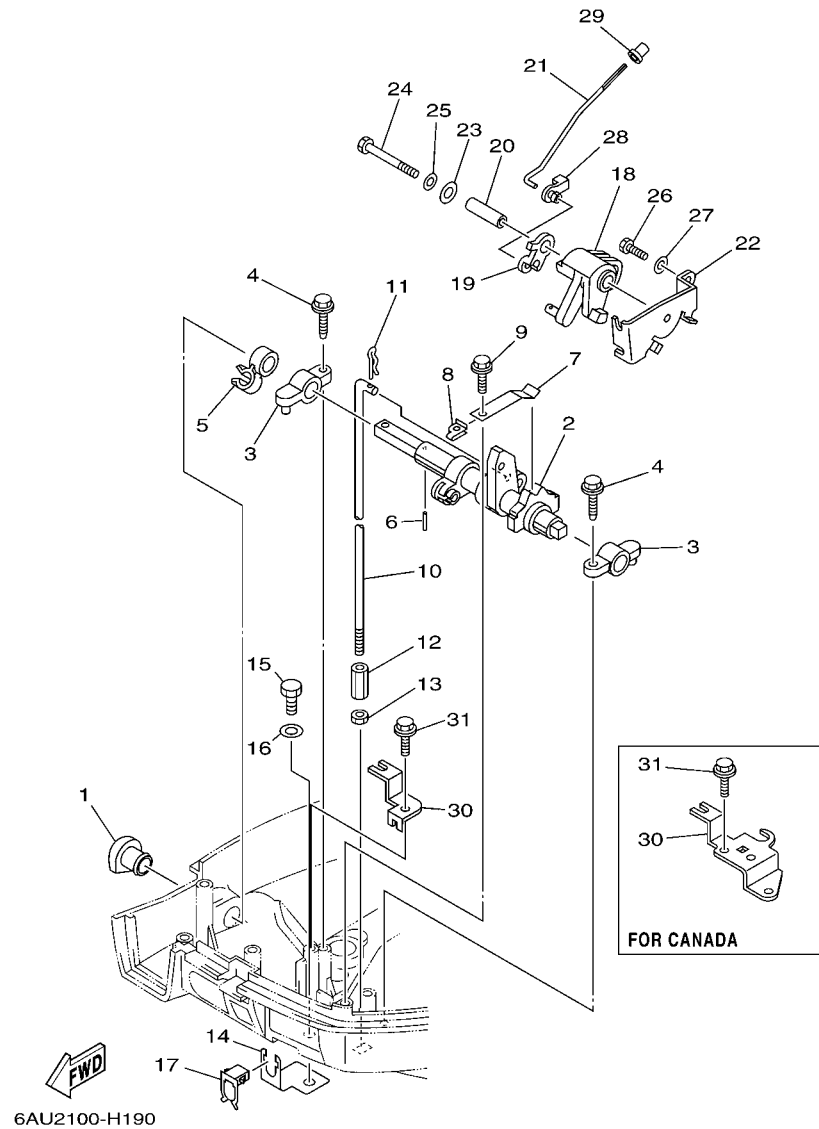


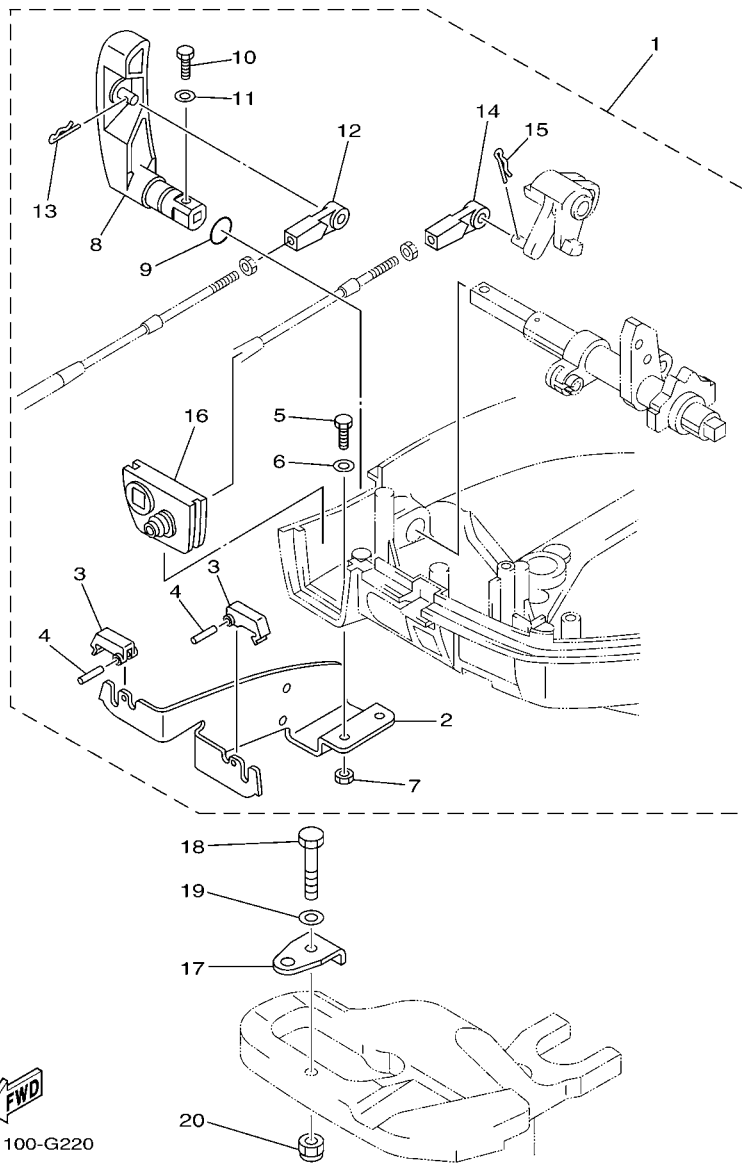
FIG. 19 CONTROL

| REF. NO. | PART NO. | DESCRIPTION | MH | EH | REMARKS |
|----------|-----------------|---------------------|----|----|----------|
| 1 | 68T-42726-00 | GROMMET | 1 | 1 | |
| 2 | 68T-44121-02 | LEVER, SHIFT ROD | 1 | 1 | |
| 3 | 6G1-41662-01-94 | BRACKET 2 | 2 | 2 | |
| 4 | 90109-06M81 | BOLT | 2 | 2 | |
| 5 | 90464-10M60 | CLAMP | 1 | 1 | |
| 6 | 91690-30014 | PIN, SPRING | 1 | 1 | |
| 7 | 65W-44116-00 | SPRING | 1 | 1 | |
| 8 | 66R-44117-00 | BRACKET | 1 | 1 | |
| 9 | 90109-06M86 | BOLT | 1 | 1 | |
| 10 | 68T-44143-00 | ROD, SHIFT | 1 | 1 | S(16.9") |
| | 68T-44143-10 | ROD, SHIFT | 1 | 1 | L(21.9") |
| 11 | 90468-18001 | CLIP | 1 | 1 | |
| 12 | 90170-06015 | NUT | 1 | 1 | |
| 13 | 95380-06700 | NUT | 1 | 1 | |
| 14 | 68T-48538-00 | CLAMP, CABLE 1 | 1 | 1 | |
| 15 | 97095-06012 | BOLT | 1 | 1 | |
| 16 | 92995-06600 | WASHER | 1 | 1 | |
| 17 | 63D-48538-00 | CLAMP, CABLE 1 | 1 | 1 | |
| 18 | 68T-41638-00 | PULLEY | 1 | 1 | |
| 19 | 68T-41283-00 | LEVER, FREE ACCEL. | 1 | 1 | |
| 20 | 90387-06M59 | COLLAR | 1 | 1 | |
| 21 | 6AU-41211-00 | LINK, ACCEL. | 1 | 1 | |
| 22 | 68T-14497-00 | STAY, THROTTLE WIRE | 1 | 1 | |
| 23 | 90201-06M62 | WASHER, PLATE | 1 | 1 | |
| 24 | 97095-06045 | BOLT | 1 | 1 | |
| 25 | 92995-06600 | WASHER | 1 | 1 | |
| 26 | 97095-06012 | BOLT | 1 | 1 | |

FIG. 19 CONTROL



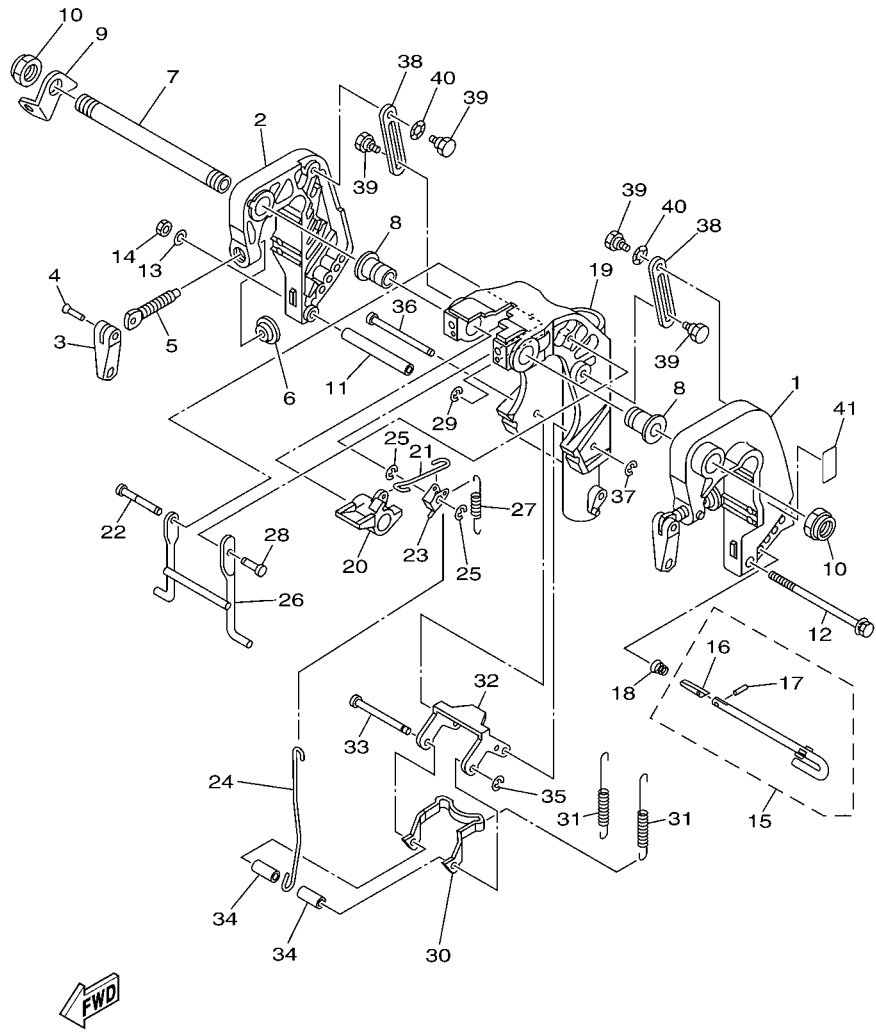
| REF. NO. | PART NO. | DESCRIPTION | MH | EH | | REMARKS |
|----------|--------------|--------------------|----|----|--|---------|
| 27 | 92995-06600 | WASHER | 1 | 1 | | |
| 28 | 661-41262-02 | JOINT, CHOKE LEVER | 1 | 1 | | |
| 29 | 647-14395-60 | CAP, OVERFLOW PIPE | 1 | 1 | | |
| 30 | 68T-15774-00 | STAY 4 | 1 | | | FOR OCE |
| | 68T-15774-10 | STAY 4 | 1 | 1 | | FOR CAN |
| 31 | 90109-06M86 | BOLT | 1 | | | FOR OCE |
| | 90109-06M86 | BOLT | 2 | 2 | | FOR CAN |
| | | | | | | |
| | | | | | | |
| | | | | | | |
| | | | | | | |
| | | | | | | |




 6AU1100-G220

FIG. 20 REMO CON ATTACHMENT

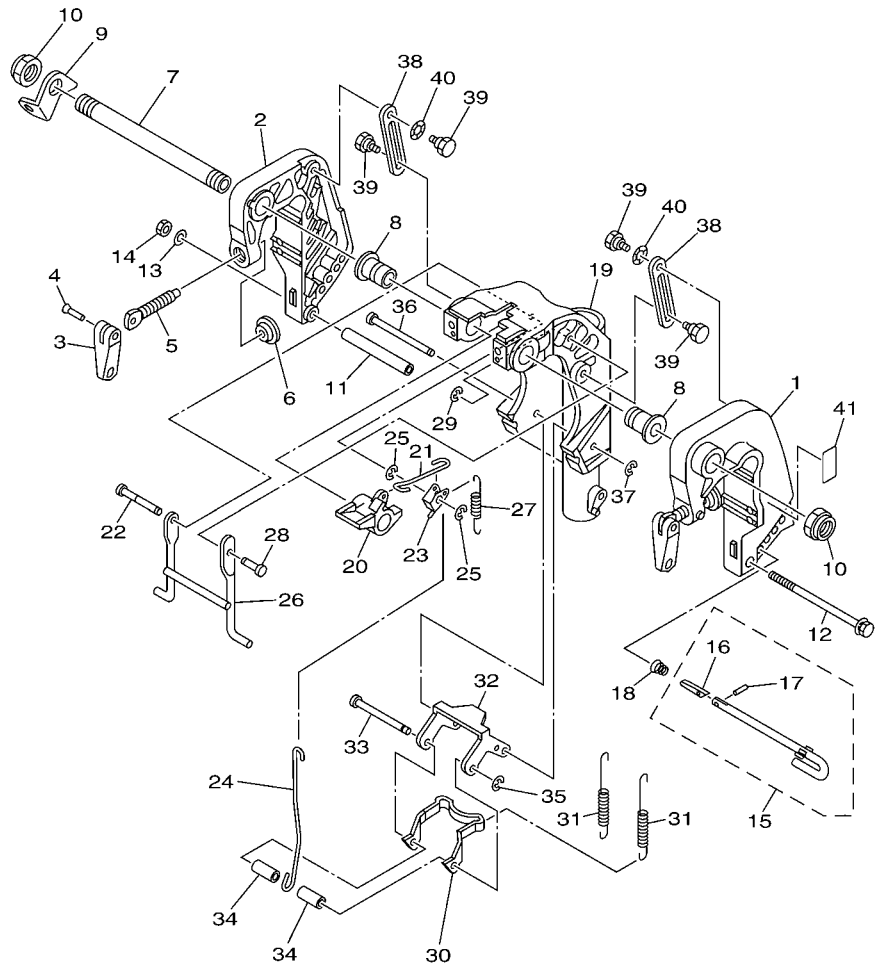
| REF. NO. | PART NO. | DESCRIPTION | MH | EH | | REMARKS |
|----------|--------------|-------------------------------|----|----|--|---------|
| 1 | 6AU-48501-00 | REMOTE CONT. ATTACHMENT ASSY. | 1 | 1 | | AP |
| 2 | 68T-48531-00 | .BRACKET, REMOTE CONTROL 1 | 1 | 1 | | |
| 3 | 682-48538-50 | .CLAMP, CABLE 1 | 2 | 2 | | |
| 4 | 91690-30012 | .PIN, SPRING | 2 | 2 | | |
| 5 | 97095-06012 | .BOLT | 2 | 2 | | |
| 6 | 92995-06600 | .WASHER | 2 | 2 | | |
| 7 | 95380-06600 | .NUT, HEXAGON | 2 | 2 | | |
| 8 | 6AU-44111-10 | .HANDLE, GEAR SHIFT | 1 | 1 | | |
| 9 | 93210-12327 | .O-RING | 1 | 1 | | |
| 10 | 97095-05016 | .BOLT | 1 | 1 | | |
| 11 | 92995-05600 | .WASHER | 1 | 1 | | |
| 12 | 663-48344-00 | .CABLE END, REMOTE CONTROL | 1 | 1 | | |
| 13 | 90468-18008 | .CLIP | 1 | 1 | | |
| 14 | 663-48344-00 | .CABLE END, REMOTE CONTROL | 1 | 1 | | |
| 15 | 90468-18008 | .CLIP | 1 | 1 | | |
| 16 | 68T-42725-10 | .GROMMET | 1 | 1 | | |
| 17 | 63V-48511-01 | HOOK, STEERING | 1 | 1 | | AP |
| 18 | 97075-08035 | BOLT | 1 | 1 | | AP |
| 19 | 92995-08600 | WASHER | 1 | 1 | | AP |
| 20 | 90185-08057 | NUT, SELF-LOCKING | 1 | 1 | | AP |



6AU1100-G230

FIG. 21 BRACKET 1

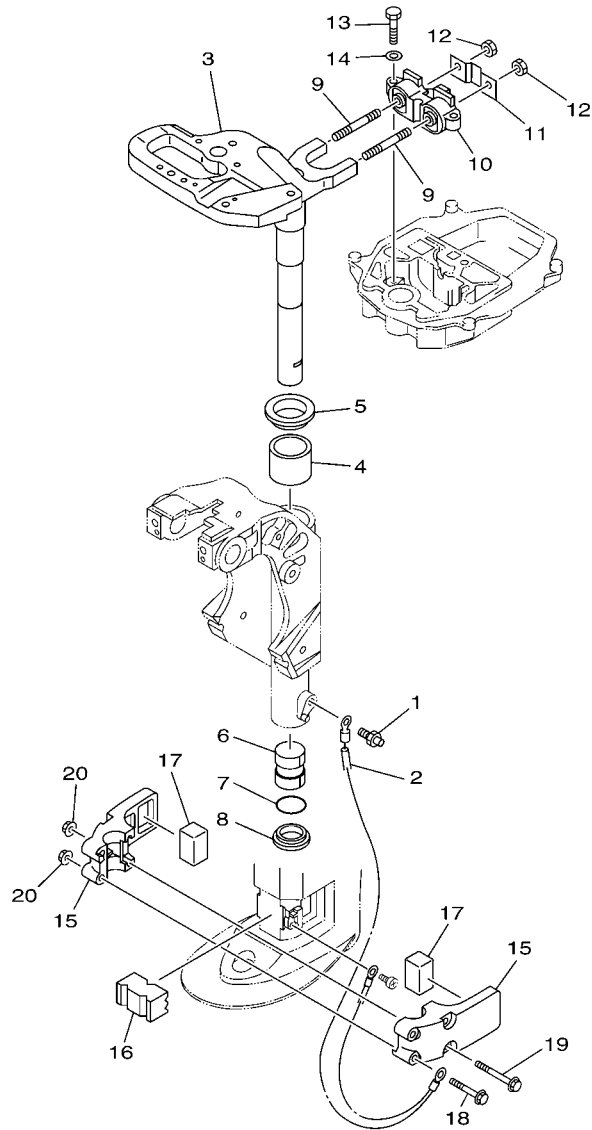
| REF. NO. | PART NO. | DESCRIPTION | MH | EH | REMARKS |
|----------|-----------------|-----------------------|----|----|----------|
| 1 | 6AH-43111-00-4D | BRACKET, CLAMP 1 | 1 | 1 | |
| 2 | 6AH-43112-00-4D | BRACKET, CLAMP 2 | 1 | 1 | |
| 3 | 6E0-43118-01 | HANDLE, TRANSOM CLAMP | 2 | 2 | |
| 4 | 90243-04M01 | PIN | 2 | 2 | |
| 5 | 6E7-43116-00 | SCREW, TRANSOM CLAMP | 2 | 2 | |
| 6 | 648-43114-01 | PAD, TRANSOM CLAMP | 2 | 2 | |
| 7 | 63W-43131-01 | BOLT, CLAMP BRACKET | 1 | 1 | |
| 8 | 90386-22MA4 | BUSH | 2 | 2 | |
| 9 | 66R-43113-00 | PLATE, CLAMP BRACKET | 1 | 1 | |
| 10 | 90185-22043 | NUT, SELF-LOCKING | 2 | 2 | |
| 11 | 90387-06M13 | COLLAR | 1 | 1 | |
| 12 | 90101-06M18 | BOLT | 1 | 1 | |
| 13 | 92990-06600 | WASHER, PLATE | 1 | 1 | |
| 14 | 95380-06700 | NUT | 1 | 1 | |
| 15 | 6L2-43160-01 | TILT ROD ASSY | 1 | 1 | |
| 16 | 689-43165-00 | .PLATE, TILT LOCK | 1 | 1 | |
| 17 | 91690-30008 | .PIN, SPRING | 1 | 1 | |
| 18 | 90502-10M07 | SPRING, CONICAL | 1 | 1 | |
| 19 | 6AH-43311-00-4D | BRACKET, SWIVEL 1 | 1 | 1 | S(16.9") |
| | 6AU-43311-10-4D | BRACKET, SWIVEL 1 | 1 | 1 | L(21.9") |
| 20 | 6AH-43631-00 | LEVER, TILT | 1 | 1 | |
| 21 | 6AH-43616-00 | ROD, TILT LOCK | 1 | 1 | |
| 22 | 68T-43646-00 | SHAFT, LEVER | 1 | 1 | |
| 23 | 6AH-43641-00 | LEVER, TILT | 1 | 1 | |
| 24 | 6AH-43617-00 | ROD, TILT LOCK | 1 | 1 | |
| 25 | 99080-05600 | CIRCLIP | 2 | 2 | |
| 26 | 6AH-43350-00 | RECEIVER ASSY | 1 | 1 | |



6AU1100-G230

FIG. 21 BRACKET 1

| REF. NO. | PART NO. | DESCRIPTION | MH | EH | REMARKS |
|----------|--------------|------------------------|----|----|----------|
| 27 | 90506-18014 | SPRING, TENSION | 1 | 1 | S(16.9") |
| | 90506-20025 | SPRING, TENSION | 1 | 1 | L(21.9") |
| 28 | 63V-43191-00 | SHAFT, STOPPER | 1 | 1 | |
| 29 | 99080-05600 | CIRCLIP | 1 | 1 | |
| 30 | 6AH-43614-00 | PLATE, TILT LOCK | 1 | 1 | |
| 31 | 90506-20020 | SPRING, TENSION | 2 | 2 | S(16.9") |
| | 90506-23016 | SPRING, TENSION | 2 | 2 | L(21.9") |
| 32 | 6AH-43615-00 | PLATE, TILT LOCK | 1 | 1 | |
| 33 | 68T-43611-00 | SHAFT, TILT LOCK | 1 | 1 | |
| 34 | 90387-06138 | COLLAR | 2 | 2 | |
| 35 | 93430-04M03 | CIRCLIP | 1 | 1 | |
| 36 | 68T-43659-00 | SHAFT, REVERSE LOCK | 1 | 1 | |
| 37 | 99080-05600 | CIRCLIP | 1 | 1 | |
| 38 | 6AH-43627-00 | STOPPER | 2 | 2 | |
| 39 | 90109-06M84 | BOLT | 4 | 4 | |
| 40 | 90206-10M24 | WASHER, WAVE | 2 | 2 | |
| 41 | 63V-82377-50 | LABEL (SPARK,IGNITION) | 1 | 1 | FOR CAN |
| | | | | | |
| | | | | | |
| | | | | | |
| | | | | | |

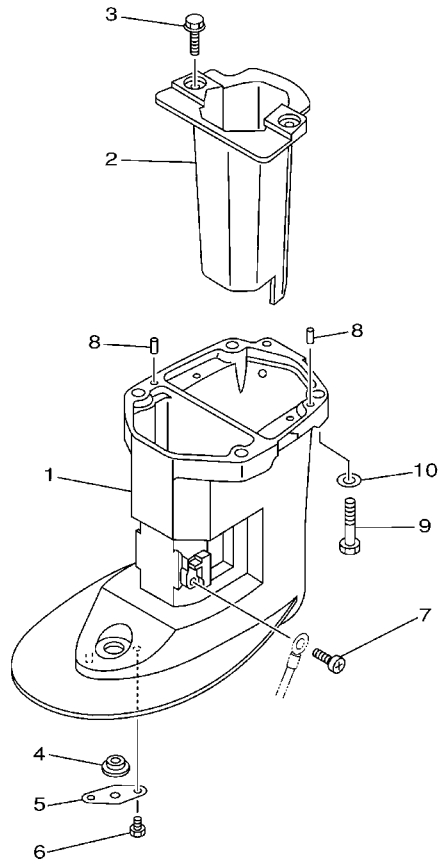


6AU2100-H220

FIG. 22 BRACKET 2

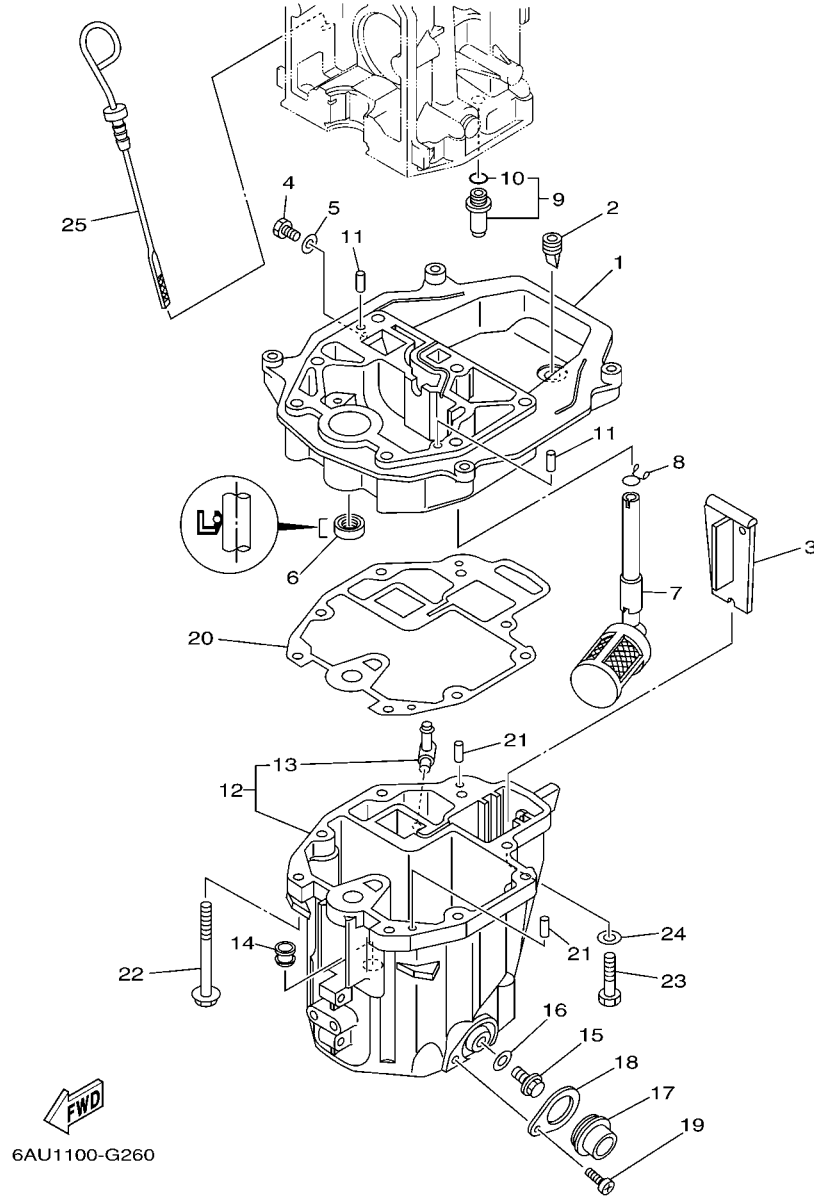
| REF. NO. | PART NO. | DESCRIPTION | MH | EH | REMARKS |
|----------|-----------------|-----------------------------|----|----|----------|
| 1 | 93700-06M03 | NIPPLE, GREASE | 1 | 1 | |
| 2 | 68T-82127-00 | WIRE, LEAD 2 | 1 | 1 | |
| 3 | 6AU-42511-00-4D | BRACKET, STEERING | 1 | 1 | S(16.9") |
| | 6AU-42511-10-4D | BRACKET, STEERING | 1 | 1 | L(21.9") |
| 4 | 90386-40001 | BUSH | 1 | 1 | |
| 5 | 90209-40008 | WASHER | 1 | 1 | |
| 6 | 90386-30048 | BUSH | 1 | 1 | |
| 7 | 93210-29M94 | O-RING | 1 | 1 | |
| 8 | 90386-30M60 | BUSH | 1 | 1 | |
| 9 | 90116-08M54 | BOLT, STUD | 2 | 2 | |
| 10 | 68T-44517-00-94 | MOUNT RUBBER | 1 | 1 | |
| 11 | 68T-44526-00 | PLATE | 1 | 1 | |
| 12 | 95380-08600 | NUT | 2 | 2 | |
| 13 | 97075-06025 | BOLT | 2 | 2 | |
| 14 | 92995-06600 | WASHER | 2 | 2 | |
| 15 | 6AU-44551-00-4D | HOUSING, LOWER MOUNT RUBBER | 2 | 2 | |
| 16 | 6AU-44557-00 | MOUNT DAMPER, LOWER FRONT | 1 | 1 | |
| 17 | 682-44555-30 | MOUNT DAMPER, LOWER SIDE | 2 | 2 | |
| 18 | 90119-06012 | BOLT, WITH WASHER | 2 | 2 | |
| 19 | 90119-06198 | BOLT, WITH WASHER | 2 | 2 | |
| 20 | 90179-06M28 | NUT | 4 | 4 | |

FIG. 23 UPPER CASING



68R0010-0220

| REF. NO. | PART NO. | DESCRIPTION | MH | EH | | | REMARKS |
|----------|-----------------|-------------------|----|----|--|--|----------|
| 1 | 6AU-45111-00-4D | CASING, UPPER | 1 | 1 | | | S(16.9") |
| | 6AU-45111-10-4D | CASING, UPPER | 1 | 1 | | | L(21.9") |
| 2 | 6AU-14711-00-5B | MUFFLER 1 | 1 | 1 | | | |
| 3 | 97575-06514 | BOLT, WITH WASHER | 2 | 2 | | | |
| 4 | 90480-14M54 | GROMMET | 1 | 1 | | | |
| 5 | 68T-45321-00 | PLATE | 1 | 1 | | | |
| 6 | 97095-06008 | BOLT | 1 | 1 | | | |
| 7 | 97885-05008 | SCREW, PAN HEAD | 1 | 1 | | | |
| 8 | 93604-12M07 | PIN, DOWEL | 2 | 2 | | | |
| 9 | 97075-08035 | BOLT | 4 | 4 | | | |
| 10 | 92995-08600 | WASHER | 4 | 4 | | | |
| | | | | | | | |
| | | | | | | | |
| | | | | | | | |
| | | | | | | | |



6AU1100-G260

FIG. 24 OIL PAN

| REF. NO. | PART NO. | DESCRIPTION | MH | EH | | | REMARKS |
|----------|-----------------|----------------------|----|----|--|--|---------|
| 1 | 68T-41137-00-94 | GUIDE, EXHAUST | 1 | 1 | | | |
| 2 | 65W-42717-00 | RUBBER, SEAL 2 | 1 | 1 | | | |
| 3 | 68T-45181-00 | PLATE | 1 | 1 | | | |
| 4 | 97095-08014 | BOLT | 1 | 1 | | | |
| 5 | 90430-08143 | GASKET | 1 | 1 | | | |
| 6 | 93101-12M70 | OIL SEAL | 1 | 1 | | | |
| 7 | 68T-13421-01 | STRAINER 2 | 1 | 1 | | | |
| 8 | 90467-11M08 | CLIP | 1 | 1 | | | |
| 9 | 6G8-11575-00 | RELIEF VALVE ASSY | 1 | 1 | | | |
| 10 | 93210-12M62 | .O-RING | 1 | 1 | | | |
| 11 | 93606-19M23 | PIN, DOWEL | 2 | 2 | | | |
| 12 | 68T-15311-01-5B | OIL PAN | 1 | 1 | | | |
| 13 | 6H1-11372-00 | .NIPPLE, HOSE | 1 | 1 | | | |
| 14 | 90480-10M28 | GROMMET | 1 | 1 | | | |
| 15 | 90340-10M10 | PLUG, STRAIGHT SCREW | 1 | 1 | | | |
| 16 | 90430-10M11 | GASKET | 1 | 1 | | | |
| 17 | 68T-15316-00 | DAMPER 1 | 1 | 1 | | | |
| 18 | 68T-15317-00 | SPACER, ENGINE MOUNT | 1 | 1 | | | |
| 19 | 97885-05008 | SCREW, PAN HEAD | 1 | 1 | | | |
| 20 | 68T-13475-00 | GASKET | 1 | 1 | | | |
| 21 | 93604-12M07 | PIN, DOWEL | 2 | 2 | | | |
| 22 | 90119-08005 | BOLT, WITH WASHER | 6 | 6 | | | |
| 23 | 97075-08030 | BOLT | 2 | 2 | | | |
| 24 | 92995-08600 | WASHER | 2 | 2 | | | |
| 25 | 68T-15362-00 | PLUG, OIL LEVEL | 1 | 1 | | | |

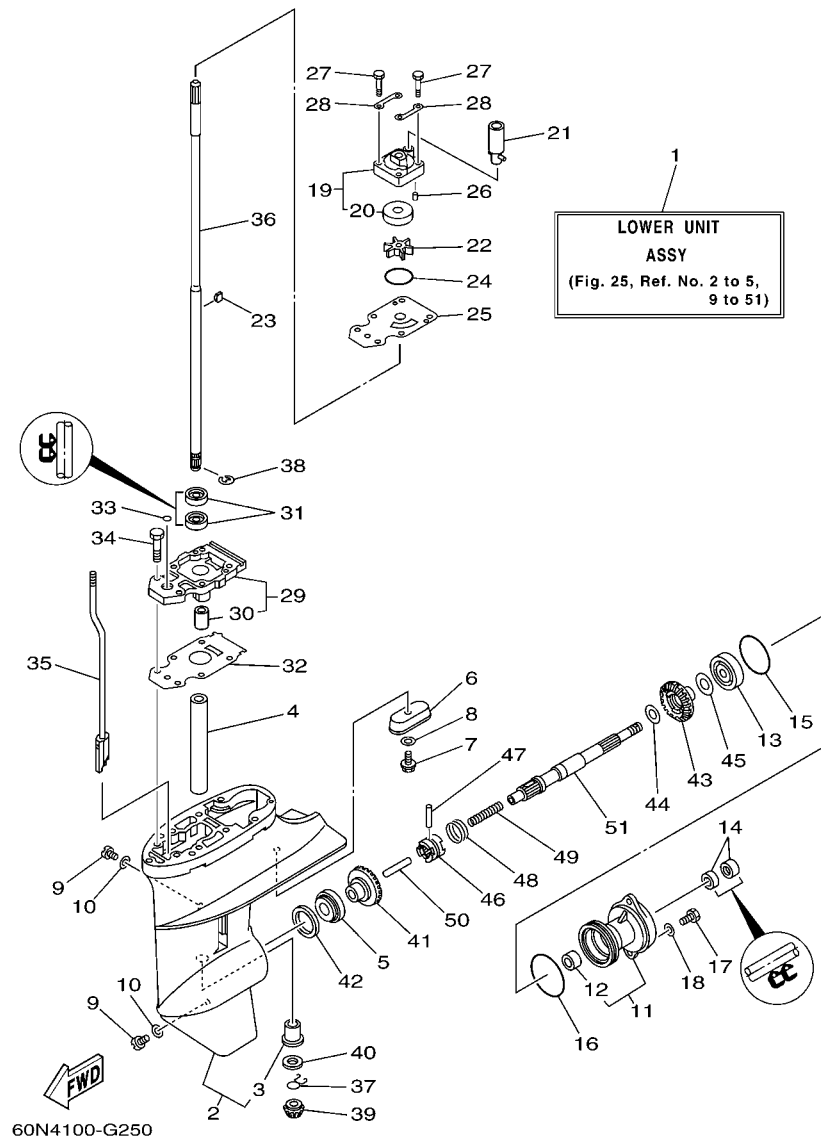


FIG. 25 LOWER CASING & DRIVE 1

| REF. NO. | PART NO. | DESCRIPTION | MH | EH | REMARKS |
|----------|-----------------|--------------------------|----|----|----------|
| 1 | 6AU-45300-00-4D | LOWER UNIT ASSY | 1 | 1 | S(16.9") |
| | 6AU-45300-10-4D | LOWER UNIT ASSY | 1 | 1 | L(21.9") |
| 2 | 6AU-45311-00-4D | CASING, LOWER | 1 | 1 | |
| 3 | 6G1-45317-09 | .BUSHING, DRIVE SHAFT | 1 | 1 | |
| 4 | 90387-14M49 | COLLAR | 1 | 1 | |
| 5 | 93306-004U0 | BEARING | 1 | 1 | |
| 6 | 68T-45251-00 | ANODE | 1 | 1 | |
| 7 | 95895-06016 | BOLT, FLANGE | 1 | 1 | |
| 8 | 92990-06300 | WASHER, INTERNAL TOOTH | 1 | 1 | |
| 9 | 90340-08002 | PLUG, STRAIGHT SCREW | 2 | 2 | |
| 10 | 90430-08020 | GASKET | 2 | 2 | |
| 11 | 6G1-45361-01-4D | CAP, LOWER CASING | 1 | 1 | |
| 12 | 6G1-45362-09 | .BUSHING | 1 | 1 | |
| 13 | 93306-004U0 | BEARING | 1 | 1 | |
| 14 | 93101-15074 | OIL SEAL | 2 | 2 | |
| 15 | 93210-49046 | O-RING | 1 | 1 | |
| 16 | 93210-53M08 | O-RING | 1 | 1 | |
| 17 | 97095-06016 | BOLT | 2 | 2 | |
| 18 | 92995-06600 | WASHER | 2 | 2 | |
| 19 | 63V-44301-00 | WATER PUMP HOUSING COMP. | 1 | 1 | |
| 20 | 63V-44322-00 | .INSERT, CARTRIDGE | 1 | 1 | |
| 21 | 68T-44366-00 | DAMPER, WATER SEAL | 1 | 1 | |
| 22 | 68T-44352-00 | IMPELLER | 1 | 1 | |
| 23 | 664-44338-00 | KEY, WOODRUFF | 1 | 1 | |
| 24 | 93210-44398 | O-RING | 1 | 1 | |
| 25 | 68T-44323-00 | OUTER PLATE, CARTRIDGE | 1 | 1 | |
| 26 | 93604-12M07 | PIN, DOWEL | 2 | 2 | |

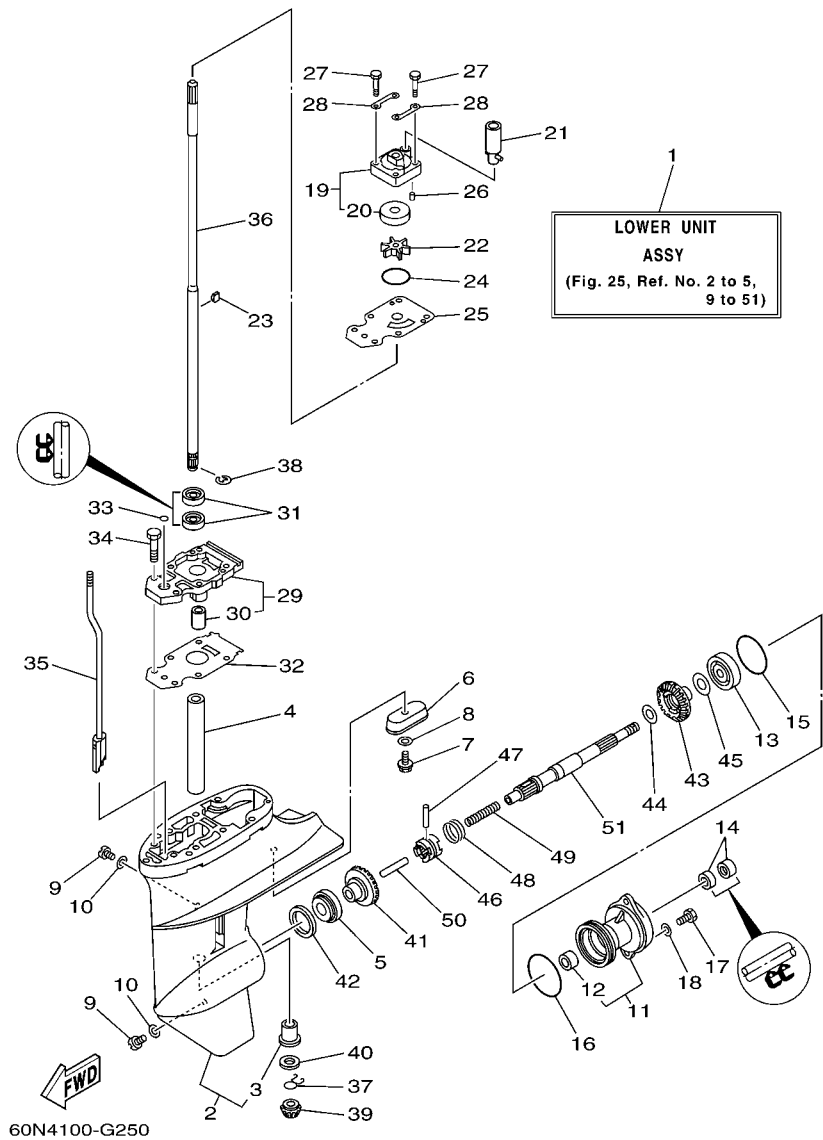


FIG. 25 LOWER CASING & DRIVE 1

| REF. NO. | PART NO. | DESCRIPTION | MH | EH | | REMARKS |
|----------|-----------------|-----------------------|----|----|--|----------|
| 27 | 97080-08045 | BOLT | 4 | 4 | | |
| 28 | 63V-44328-00 | PLATE | 2 | 2 | | |
| 29 | 68T-45331-00-5B | HOUSING, BEARING | 1 | 1 | | |
| 30 | 6G1-45316-09 | .BUSHING, DRIVE SHAFT | 1 | 1 | | |
| 31 | 93101-11M23 | OIL SEAL | 2 | 2 | | |
| 32 | 68T-45315-A0 | PACKING, LOWER CASING | 1 | 1 | | |
| 33 | 93210-06ME6 | O-RING | 1 | 1 | | |
| 34 | 97080-08025 | BOLT | 2 | 2 | | |
| 35 | 68T-44150-00 | SHIFT CAM ASSY | 1 | 1 | | |
| 36 | 6AU-45511-00 | SHAFT, DRIVE | 1 | 1 | | S(16.9") |
| | 6AU-45511-10 | SHAFT, DRIVE | 1 | 1 | | L(21.9") |
| 37 | 90467-09M05 | CLIP | 1 | 1 | | |
| 38 | 99001-07600 | CIRCLIP | 1 | 1 | | |
| 39 | 68T-45551-00 | PINION (13T) | 1 | 1 | | |
| 40 | 6G1-45533-00 | SHIM (T:1.90MM) | 1 | 1 | | UR |
| | 6G1-45533-10 | SHIM (T:2.00MM) | 1 | 1 | | UR |
| | 6G1-45533-20 | SHIM (T:2.10MM) | 1 | 1 | | UR |
| | 6G1-45533-30 | SHIM (T:2.20MM) | 1 | 1 | | UR |
| 41 | 68T-45560-00 | GEAR 1 (27T) | 1 | 1 | | |
| 42 | 664-45587-01 | SHIM (T:0.10MM) | 1 | 1 | | UR |
| | 664-45587-10 | SHIM (T:0.12MM) | 1 | 1 | | UR |
| | 664-45587-20 | SHIM (T:0.15MM) | 1 | 1 | | UR |
| | 664-45587-30 | SHIM (T:0.18MM) | 1 | 1 | | UR |
| | 664-45587-40 | SHIM (T:0.30MM) | 1 | 1 | | UR |
| | 664-45587-50 | SHIM (T:0.40MM) | 1 | 1 | | UR |
| | 664-45587-60 | SHIM (T:0.50MM) | 1 | 1 | | UR |
| 43 | 68T-45571-00 | GEAR 2 (27T) | 1 | 1 | | |

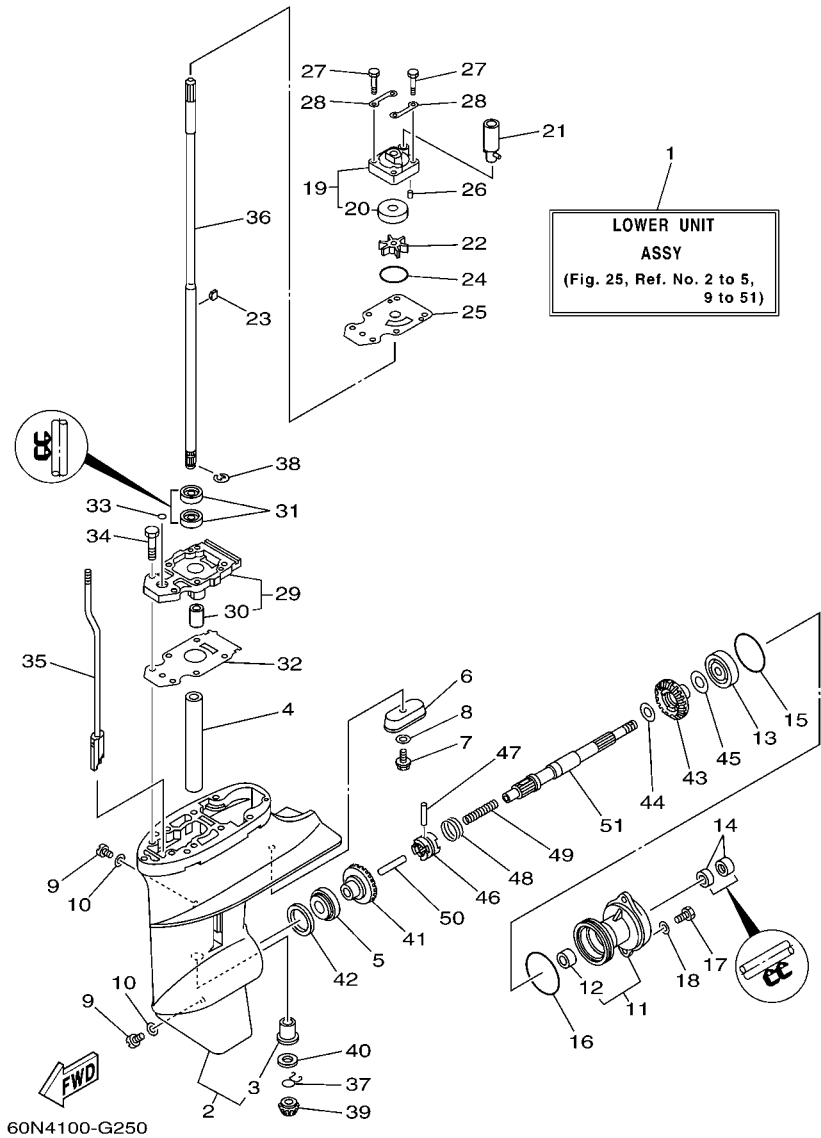
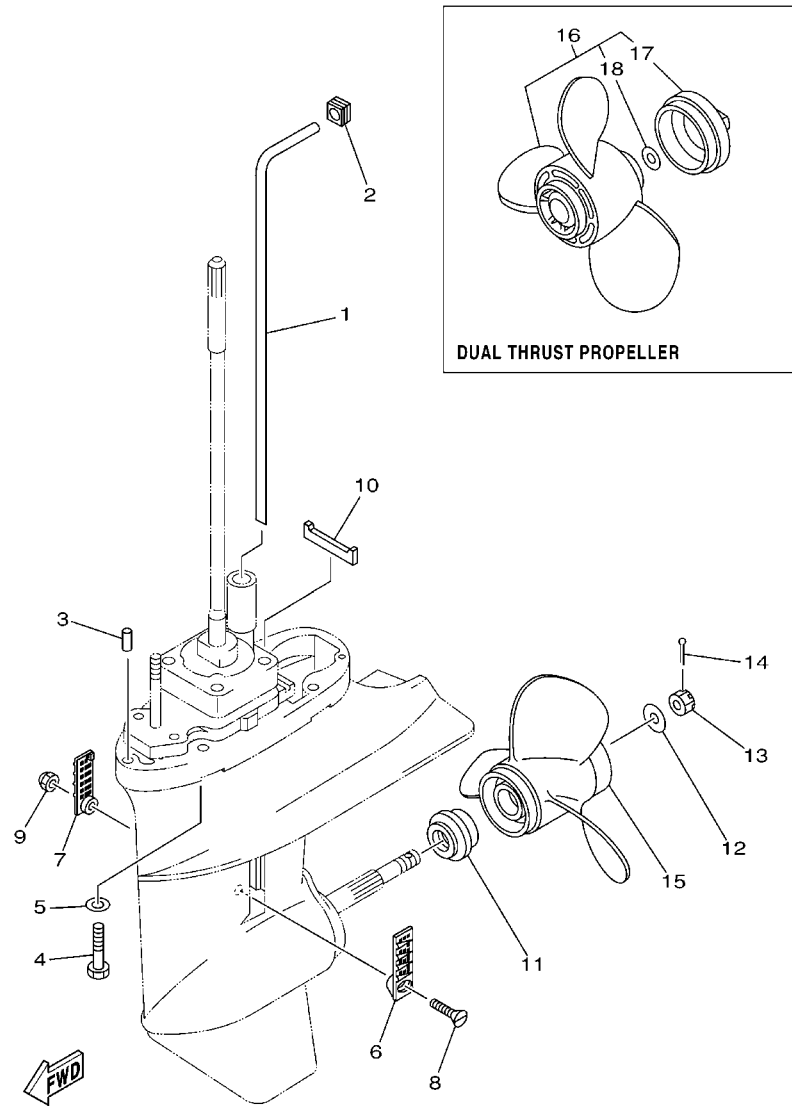


FIG. 25 LOWER CASING & DRIVE 1

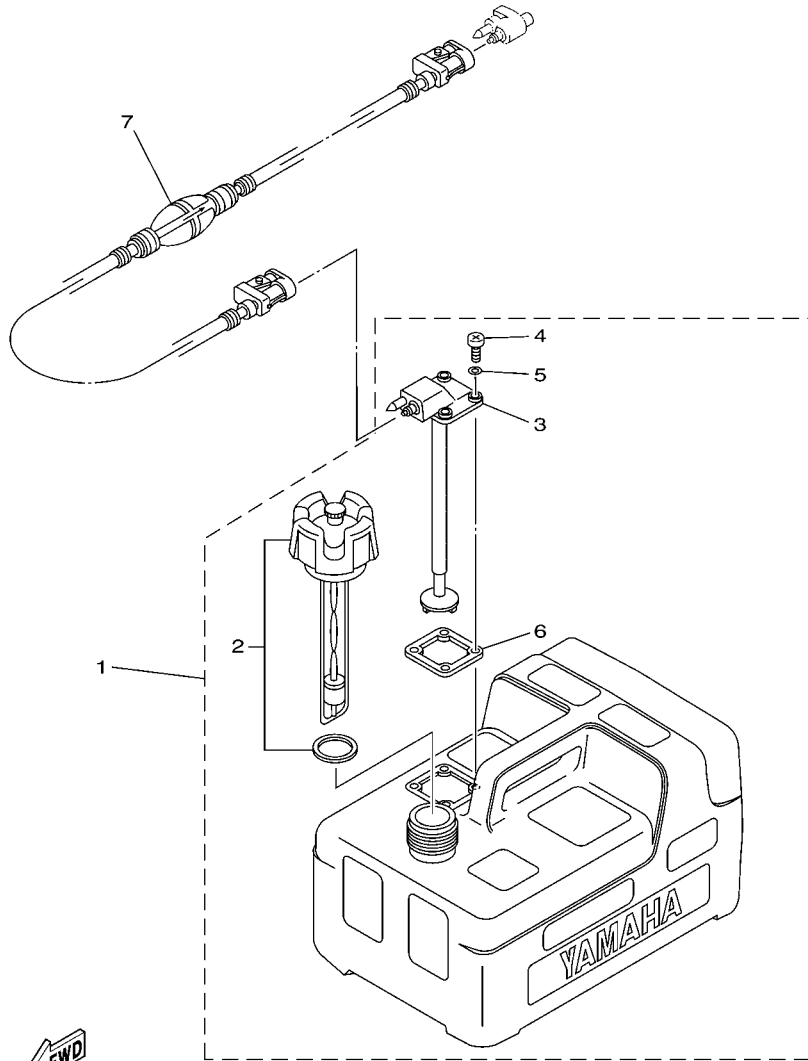
| REF. NO. | PART NO. | DESCRIPTION | MH | EH | | | | REMARKS |
|----------|--------------|---------------------|----|----|--|--|--|---------|
| 44 | 90201-15M89 | WASHER, PLATE | 1 | 1 | | | | |
| 45 | 647-45567-00 | SHIM (T:0.10MM) | 1 | 1 | | | | UN |
| 46 | 68T-45631-00 | CLUTCH, DOG | 1 | 1 | | | | |
| 47 | 6G1-45632-00 | PIN, CROSS | 1 | 1 | | | | |
| 48 | 654-45633-00 | RING, CROSS PIN | 1 | 1 | | | | |
| 49 | 90501-140A1 | SPRING, COMPRESSION | 1 | 1 | | | | |
| 50 | 6G1-45635-00 | PLUNGER, SHIFT | 1 | 1 | | | | |
| 51 | 68T-45611-00 | SHAFT, PROPELLER | 1 | 1 | | | | |
| ----- | | | | | | | | |
| ----- | | | | | | | | |
| ----- | | | | | | | | |
| ----- | | | | | | | | |
| ----- | | | | | | | | |
| ----- | | | | | | | | |
| ----- | | | | | | | | |
| ----- | | | | | | | | |



68R0100-0230

FIG. 26 LOWER CASING & DRIVE 2

| REF. NO. | PART NO. | DESCRIPTION | MH | EH | | REMARKS |
|----------|-----------------|-------------------------------|----|----|--|----------|
| 1 | 68T-44361-00 | TUBE, WATER | 1 | 1 | | S(16.9") |
| | 68T-44361-10 | TUBE, WATER | 1 | 1 | | L(21.9") |
| 2 | 63V-44365-10 | DAMPER, WATER SEAL | 1 | 1 | | |
| 3 | 93604-12M07 | PIN, DOWEL | 2 | 2 | | |
| 4 | 97075-08035 | BOLT | 4 | 4 | | |
| 5 | 92995-08600 | WASHER | 4 | 4 | | |
| 6 | 6G1-45214-00 | COVER, WATER INLET 1 | 1 | 1 | | |
| 7 | 6G1-45215-00 | COVER, WATER INLET 2 | 1 | 1 | | |
| 8 | 90152-05M03 | SCREW, COUNTERSUNK | 1 | 1 | | |
| 9 | 90185-05002 | NUT, SELF-LOCKING | 1 | 1 | | |
| 10 | 63V-45375-00 | DAMPER, SEAL | 1 | 1 | | |
| 11 | 6G1-45987-02 | SPACER | 1 | 1 | | |
| 12 | 90201-10M01 | WASHER, PLATE | 1 | 1 | | |
| 13 | 90171-10M01 | NUT, CASTLE | 1 | 1 | | |
| 14 | 91490-30020 | PIN, COTTER | 1 | 1 | | |
| 15 | 6G1-45941-00-EL | PROPELLER (3X8-1/2"X8-1/2"-N) | 1 | 1 | | UR |
| | 6G1-45943-00-EL | PROPELLER (3X8-1/2"X7-1/2"-N) | 1 | 1 | | UR |
| | 6G1-45947-00-EL | PROPELLER (3X8-1/2"X6-1/2"-N) | 1 | 1 | | UR |
| | 6G1-45952-00-EL | PROPELLER (3X8-1/2"X8"-N) | 1 | 1 | | UR |
| | 6G1-45954-00-EL | PROPELLER (3X8-1/2"X9-1/4"-N) | 1 | 1 | | UR |
| 16 | 6G1-W4591-01-EL | PROPELLER (3X9"X7"-N) | 1 | 1 | | UR |
| | 6G1-W4592-00-EL | PROPELLER (3X9"X5"-N) | 1 | 1 | | UR |
| 17 | 6G1-45616-01 | .NUT, PROPELLER | 1 | 1 | | |
| 18 | 90201-10M02 | .WASHER, PLATE | 1 | 1 | | |



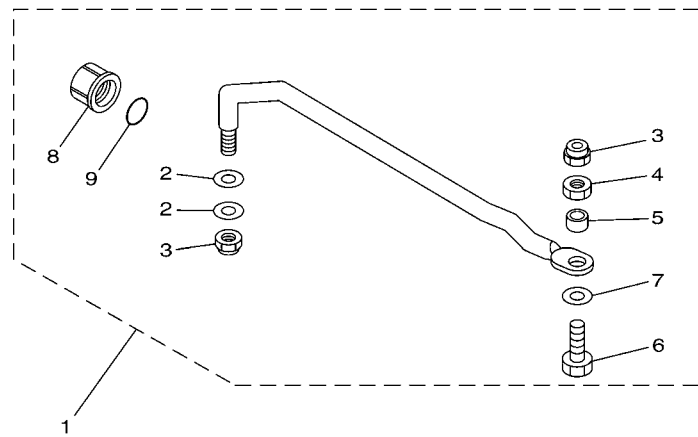
FWD
66M4100-D270

FIG. 27 FUEL TANK

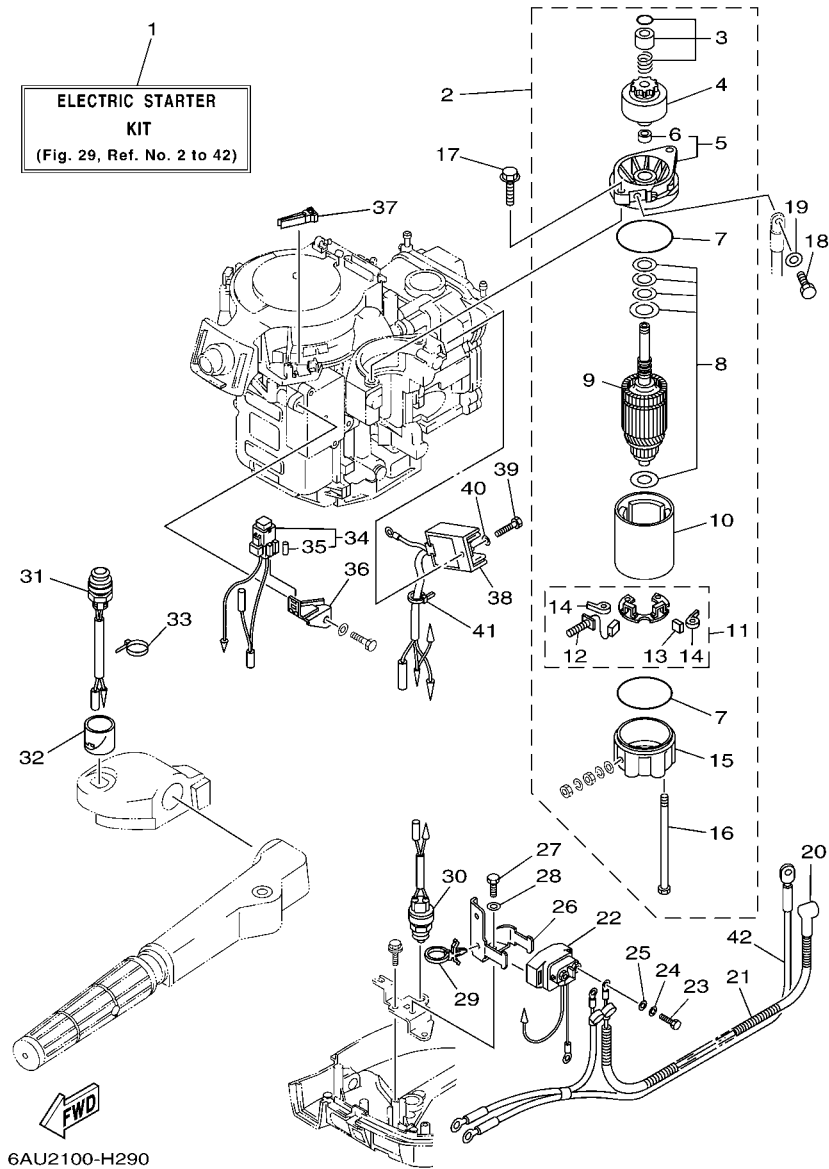
| REF. NO. | PART NO. | DESCRIPTION | MH | EH | | REMARKS |
|----------|--------------|----------------------|----|----|--|---------|
| 1 | 6YL-24201-05 | FUEL TANK ASSY (12L) | 1 | 1 | | AP |
| 2 | 6YL-24610-01 | .CAP ASSY | 1 | 1 | | |
| 3 | 6YL-24260-01 | .FUEL METER ASSY | 1 | 1 | | |
| 4 | 90157-05M16 | .SCREW, PAN HEAD | 4 | 4 | | |
| 5 | 6YL-24329-00 | .SEAL | 4 | 4 | | |
| 6 | 6YL-24268-01 | .GASKET, FUEL METER | 1 | 1 | | |
| 7 | 6YL-24306-54 | FUEL PIPE COMP. 1 | 1 | 1 | | AP |
| | | | | | | |
| | | | | | | |
| | | | | | | |
| | | | | | | |
| | | | | | | |
| | | | | | | |
| | | | | | | |

FIG. 28 STEERING GUIDE

| REF. NO. | PART NO. | DESCRIPTION | MH | EH | | | | REMARKS |
|----------|--------------|-------------------------------|----|----|--|--|--|---------|
| 1 | 68T-61350-10 | STEERING GUIDE ATTACHMENT KIT | 1 | 1 | | | | AP |
| 2 | 90201-10M20 | .WASHER, PLATE | 2 | 2 | | | | |
| 3 | 90185-09M01 | .NUT, SELF-LOCKING | 2 | 2 | | | | |
| 4 | 90170-09M03 | .NUT | 1 | 1 | | | | |
| 5 | 90387-10M42 | .COLLAR | 1 | 1 | | | | |
| 6 | 6E5-61355-00 | .BOLT | 1 | 1 | | | | |
| 7 | 90201-10M63 | .WASHER, PLATE | 1 | 1 | | | | |
| 8 | 6E5-43145-01 | .CAP, CLAMP BRACKET | 1 | 1 | | | | |
| 9 | 93210-16275 | .O-RING | 1 | 1 | | | | |
| | | | | | | | | |
| | | | | | | | | |
| | | | | | | | | |
| | | | | | | | | |
| | | | | | | | | |
| | | | | | | | | |
| | | | | | | | | |
| | | | | | | | | |
| | | | | | | | | |



6AU1100-G300



6AU2100-H290

FIG. 29 OPTIONAL PARTS 1

| REF. NO. | PART NO. | DESCRIPTION | MH | EH | | | REMARKS |
|----------|--------------|----------------------------|----|----|--|--|------------|
| 1 | 68R-W8180-11 | ELECTRIC STARTER KIT | 1 | | | | AP FOR CAN |
| 2 | 68T-81800-00 | STARTING MOTOR ASSY | 1 | | | | |
| 3 | 68T-81857-00 | .RETAINER | 1 | | | | |
| 4 | 689-81807-12 | .GEAR ASSY, STARTING MOTOR | 1 | | | | |
| 5 | 6F5-81830-10 | .FRONT BRACKET ASSY | 1 | | | | |
| 6 | 689-81831-00 | ..METAL, FRONT | 1 | | | | |
| 7 | 689-81847-11 | .O-RING | 2 | | | | |
| 8 | 689-81809-11 | .WASHER KIT | 1 | | | | |
| 9 | 689-81850-11 | .ARMATURE ASSY | 1 | | | | |
| 10 | 689-81810-11 | .STATOR ASSY | 1 | | | | |
| 11 | 689-81840-11 | .BRUSH HOLDER ASSY | 1 | | | | |
| 12 | 689-81811-11 | ..BRUSH 1 | 1 | | | | |
| 13 | 689-81812-11 | ..BRUSH 2 | 1 | | | | |
| 14 | 689-81813-10 | ..SPRING, BRUSH | 2 | | | | |
| 15 | 689-81820-11 | .REAR BRACKET ASSY | 1 | | | | |
| 16 | 689-81826-10 | .BOLT | 2 | | | | |
| 17 | 90119-08M76 | BOLT, WITH WASHER | 2 | | | | |
| 18 | 97095-08016 | BOLT | 1 | | | | |
| 19 | 92995-08600 | WASHER | 1 | | | | |
| 20 | 6G8-82117-00 | WIRE, LEAD | 1 | | | | |
| 21 | 90446-10M86 | HOSE (L140) | 1 | | | | |
| 22 | 68T-81940-00 | STARTER RELAY ASSY | 1 | | | | |
| 23 | 97095-06010 | BOLT | 2 | | | | |
| 24 | 92995-06100 | WASHER, SPRING | 2 | | | | |
| 25 | 92995-06600 | WASHER | 2 | | | | |
| 26 | 68T-81945-01 | PLATE, SWITCH FITTING | 1 | | | | |
| 27 | 97095-06012 | BOLT | 1 | | | | |

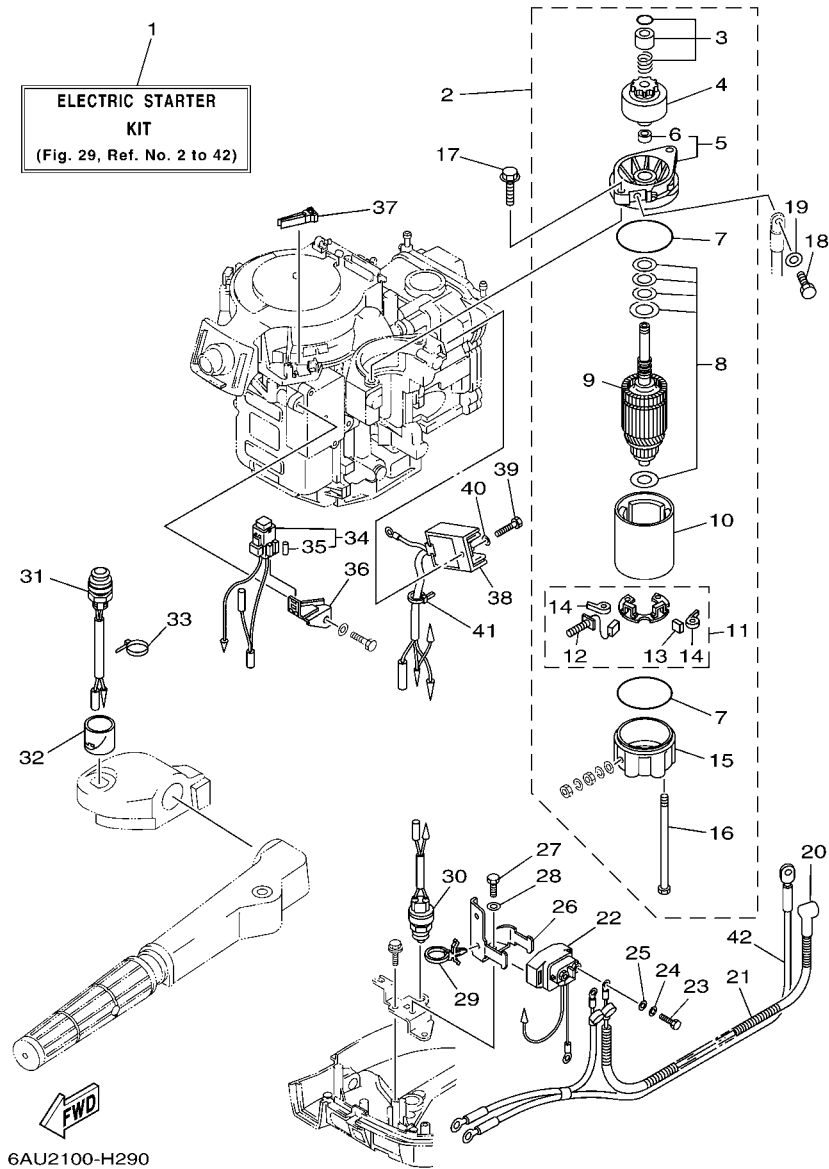
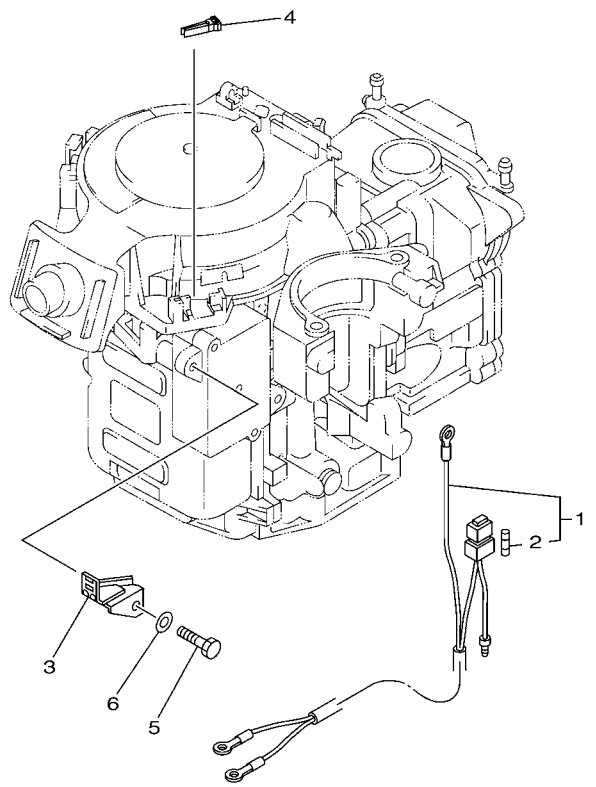


FIG. 29 OPTIONAL PARTS 1

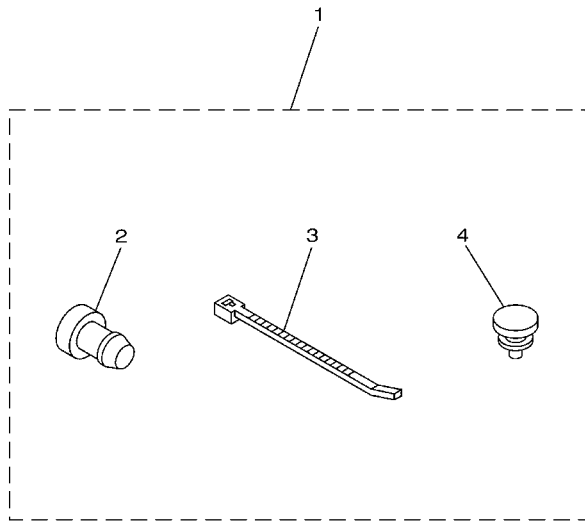
| REF. NO. | PART NO. | DESCRIPTION | MH | EH | REMARKS |
|----------|--------------|----------------------------|----|----|---------|
| 28 | 92995-06600 | WASHER | 1 | | |
| 29 | 90465-12M56 | CLAMP | 1 | | |
| 30 | 6F5-82540-01 | NEUTRAL SWITCH ASSY | 1 | | |
| 31 | 68T-81870-00 | STARTING SWITCH ASSY | 1 | | |
| 32 | 68T-81821-00 | COVER, SWITCH | 1 | | |
| 33 | 90465-11M10 | CLAMP | 1 | | |
| 34 | 68T-82150-00 | FUSE HOLDER ASSY | 1 | | |
| 35 | 66V-82151-00 | .FUSE (10A-BL) | 2 | | |
| 36 | 68T-82171-01 | STAY, FUSE BOX | 1 | | |
| 37 | 67F-2812A-00 | PULLER, FUSE | 1 | | |
| 38 | 68T-81960-00 | RECTIFIER & REGULATOR ASSY | 1 | | |
| 39 | 97095-06012 | BOLT | 1 | | |
| 40 | 92995-06600 | WASHER | 1 | | |
| 41 | 90465-11M10 | CLAMP | 2 | | |
| 42 | 68T-82105-00 | WIRE HARNESS (L: 2.1M) | 1 | | |

FIG. 30 OPTIONAL PARTS 2



| REF. NO. | PART NO. | DESCRIPTION | MH | EH | | REMARKS |
|----------|--------------|----------------|----|----|--|---------|
| 1 | 68T-81949-00 | WIRE, LEAD | 1 | | | AP |
| 2 | 66V-82151-00 | .FUSE (10A-BL) | 2 | | | |
| 3 | 68T-82171-01 | STAY, FUSE BOX | 1 | | | AP |
| 4 | 67F-2812A-00 | PULLER, FUSE | 1 | | | AP |
| 5 | 97095-06012 | BOLT | 1 | | | AP |
| 6 | 92995-06600 | WASHER | 1 | | | AP |
| ----- | | | | | | |
| ----- | | | | | | |
| ----- | | | | | | |
| ----- | | | | | | |
| ----- | | | | | | |
| ----- | | | | | | |
| ----- | | | | | | |
| ----- | | | | | | |
| ----- | | | | | | |

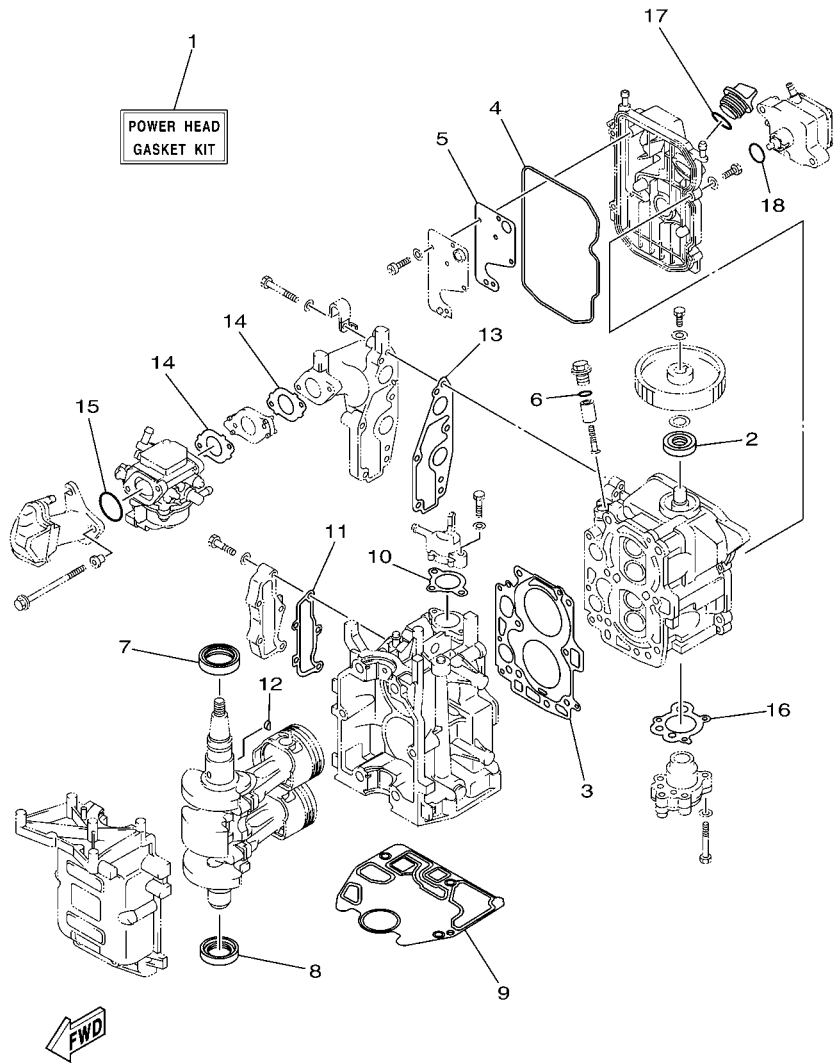

 6AU1100-G320



68R1100-2290

FIG. 31 OPTIONAL PARTS 3

| REF. NO. | PART NO. | DESCRIPTION | MH | EH | | | | | REMARKS |
|----------|--------------|--------------------------|----|----|--|--|--|--|------------|
| 1 | 69G-W1257-00 | FLUSHING ELIMINATION KIT | 1 | 1 | | | | | AP FOR CAN |
| 2 | 90338-07M16 | .PLUG | 1 | 1 | | | | | |
| 3 | 90465-11M10 | .CLAMP | 1 | 1 | | | | | |
| 4 | 90480-06M19 | .GROMMET | 2 | 2 | | | | | |
| | | | | | | | | | |
| | | | | | | | | | |
| | | | | | | | | | |
| | | | | | | | | | |
| | | | | | | | | | |
| | | | | | | | | | |
| | | | | | | | | | |
| | | | | | | | | | |

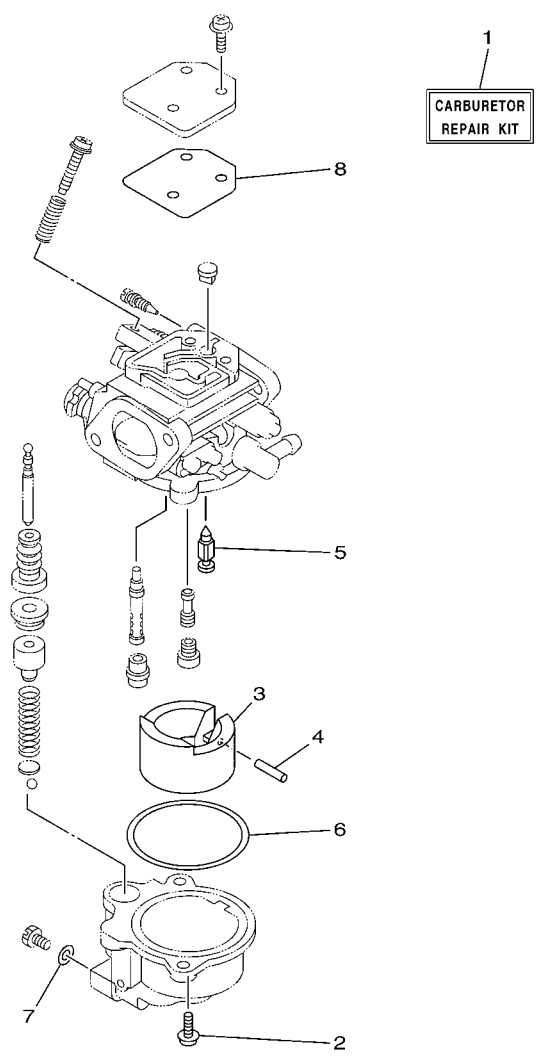


6AU1100-G340

FIG. 32 REPAIR KIT 1

| REF. NO. | PART NO. | DESCRIPTION | MH | EH | | REMARKS |
|----------|--------------|------------------------------|----|----|--|---------|
| 1 | 6AU-W0001-00 | POWER HEAD GASKET KIT | 1 | 1 | | |
| 2 | 93102-18M21 | .OIL SEAL | 1 | 1 | | |
| 3 | 68T-11181-00 | .GASKET, CYLINDER HEAD 1 | 1 | 1 | | |
| 4 | 68T-11356-00 | .SEAL, CYLINDER 2 | 1 | 1 | | |
| 5 | 68T-11169-A0 | .GASKET, BREATHER COVER | 1 | 1 | | |
| 6 | 93210-13M63 | .O-RING | 1 | 1 | | |
| 7 | 93102-30M22 | .OIL SEAL | 1 | 1 | | |
| 8 | 93101-25M69 | .OIL SEAL | 1 | 1 | | |
| 9 | 68T-11351-00 | .GASKET, CYLINDER | 1 | 1 | | |
| 10 | 6G8-12414-A0 | .GASKET, COVER | 1 | 1 | | |
| 11 | 68T-41114-A0 | .GASKET, EXHAUST OUTER COVER | 1 | 1 | | |
| 12 | 90280-03M01 | .KEY, WOODRUFF | 1 | 1 | | |
| 13 | 68T-13645-00 | .GASKET, MANIFOLD 1 | 1 | 1 | | |
| 14 | 68T-13646-A0 | .GASKET, MANIFOLD 2 | 2 | 2 | | |
| 15 | 93210-31MJ5 | .O-RING | 1 | 1 | | |
| 16 | 68T-13329-00 | .GASKET, PUMP COVER | 1 | 1 | | |
| 17 | 93210-24M79 | .O-RING | 1 | 1 | | |
| 18 | 93210-20M65 | .O-RING | 1 | 1 | | |
| | | | | | | |
| | | | | | | |
| | | | | | | |

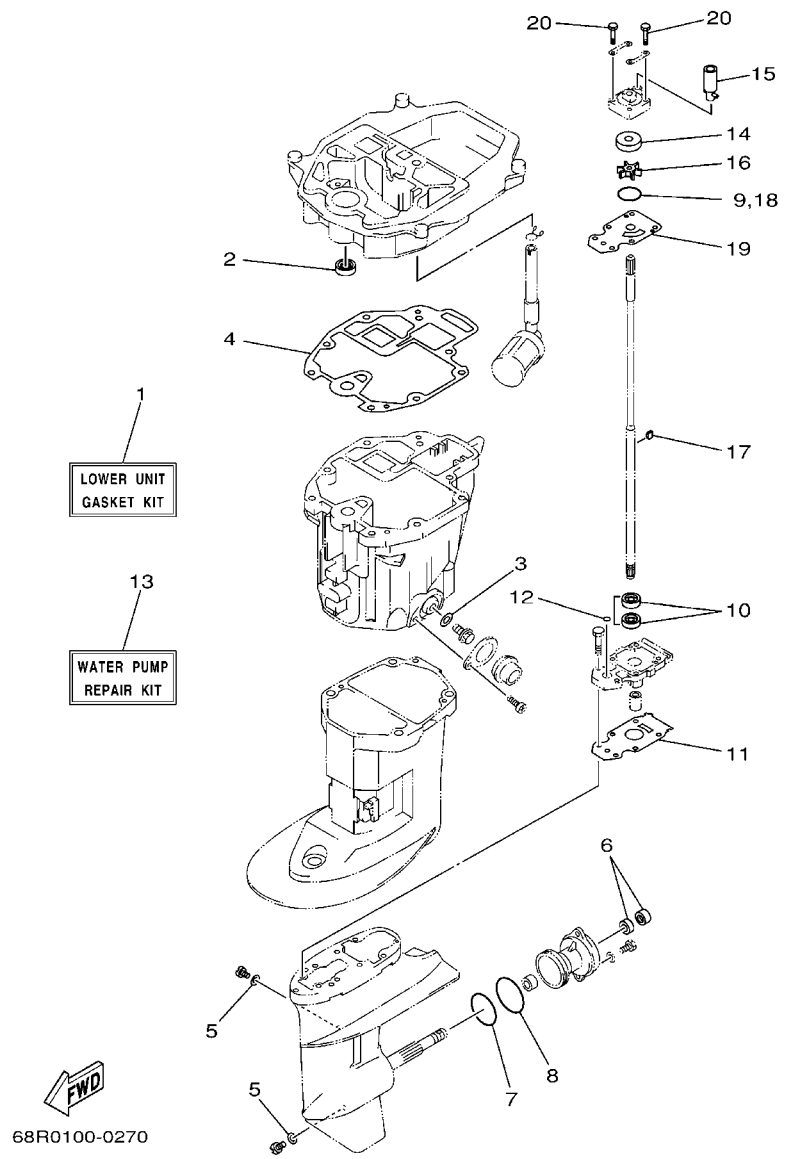
FIG. 33 REPAIR KIT 2



FWD
6AU1100-G350

| REF. NO. | PART NO. | DESCRIPTION | MH | EH | | | REMARKS |
|----------|--------------|------------------------|----|----|--|--|---------|
| 1 | 6AU-W0093-00 | CARBURETOR REPAIR KIT | 1 | 1 | | | |
| 2 | 97980-04112 | .SCREW, WITH WASHER | 2 | 2 | | | |
| 3 | 6AU-14385-00 | .FLOAT | 1 | 1 | | | |
| 4 | 67D-14386-00 | .PIN, FLOAT | 1 | 1 | | | |
| 5 | 68T-14546-00 | .VALVE, NEEDLE | 1 | 1 | | | |
| 6 | 6AU-14984-00 | .GASKET, FLOAT CHAMBER | 1 | 1 | | | |
| 7 | 6J8-14959-00 | .GASKET | 1 | 1 | | | |
| 8 | 67D-14536-00 | .GASKET | 1 | 1 | | | |
| | | | | | | | |
| | | | | | | | |
| | | | | | | | |
| | | | | | | | |
| | | | | | | | |
| | | | | | | | |
| | | | | | | | |

FIG. 34 REPAIR KIT 3



| REF. NO. | PART NO. | DESCRIPTION | MH | EH | REMARKS |
|----------|--------------|-------------------------|----|----|---------|
| 1 | 68T-W0001-20 | LOWER UNIT GASKET KIT | 1 | 1 | |
| 2 | 93101-12M70 | .OIL SEAL | 1 | 1 | |
| 3 | 90430-10M11 | .GASKET | 1 | 1 | |
| 4 | 68T-13475-00 | .GASKET | 1 | 1 | |
| 5 | 90430-08020 | .GASKET | 2 | 2 | |
| 6 | 93101-15074 | .OIL SEAL | 2 | 2 | |
| 7 | 93210-49046 | .O-RING | 1 | 1 | |
| 8 | 93210-53M08 | .O-RING | 1 | 1 | |
| 9 | 93210-44398 | .O-RING | 1 | 1 | |
| 10 | 93101-11M23 | .OIL SEAL | 2 | 2 | |
| 11 | 68T-45315-A0 | .PACKING, LOWER CASING | 1 | 1 | |
| 12 | 93210-06ME6 | .O-RING | 1 | 1 | |
| 13 | 68T-W0078-00 | WATER PUMP REPAIR KIT | 1 | 1 | |
| 14 | 63V-44322-00 | .INSERT, CARTRIDGE | 1 | 1 | |
| 15 | 68T-44366-00 | .DAMPER, WATER SEAL | 1 | 1 | |
| 16 | 68T-44352-00 | .IMPELLER | 1 | 1 | |
| 17 | 664-44338-00 | .KEY, WOODRUFF | 1 | 1 | |
| 18 | 93210-44398 | .O-RING | 1 | 1 | |
| 19 | 68T-44323-00 | .OUTER PLATE, CARTRIDGE | 1 | 1 | |
| 20 | 97080-08045 | .BOLT | 4 | 4 | |

NUMERICAL INDEX

| PART NO. | REF. NO. | PART NO. | REF. NO. | PART NO. | REF. NO. | PART NO. | REF. NO. | PART NO. | REF. NO. | PART NO. | REF. NO. |
|-----------------|----------|-----------------|----------|-----------------|----------|-----------------|----------|-----------------|----------|-----------------|----------|
| 6AU-11111-00-1S | 4 - 2 | 688-12412-00 | 2 - 7 | 67D-14386-00 | 33 - 4 | 68T-15794-00 | 10 - 18 | 6G1-42126-00 | 17 - 9 | 6AH-43112-00-4D | 21 - 2 |
| 6AU-11133-10 | 4 - 3 | 68T-12413-00-1S | 2 - 8 | 647-14395-60 | 19 - 29 | 68T-15795-00 | 10 - 3 | 66R-42129-00 | 17 - 33 | 66R-43113-00 | 21 - 9 |
| 68T-11168-00 | 4 - 14 | 6G8-12414-A0 | 2 - 9 | 6AU-14440-00 | 6 - 10 | 6YL-24201-05 | 27 - 1 | 66M-42131-01 | 17 - 27 | 648-43114-01 | 21 - 6 |
| 68T-11169-A0 | 4 - 15 | | | 68T-14497-00 | 19 - 22 | 68T-24251-00 | 9 - 8 | 6AU-42137-00 | 17 - 14 | 6E7-43116-00 | 21 - 5 |
| | 32 - 5 | 68T-12481-00 | 2 - 11 | 67D-14527-00 | 7 - 23 | 6YL-24260-01 | 27 - 3 | 68T-42138-01 | 17 - 7 | 6E0-43118-01 | 21 - 3 |
| 68T-11181-00 | 4 - 4 | 6E5-12481-00 | 16 - 29 | 67D-14536-00 | 7 - 22 | 6YL-24268-01 | 27 - 6 | 65W-42159-00 | 17 - 8 | 63W-43131-01 | 21 - 7 |
| | 32 - 3 | 67F-12482-00 | 6 - 2 | | 33 - 8 | 6G1-24304-02 | 9 - 1 | 66R-42171-00 | 17 - 22 | 6E5-43145-01 | 28 - 8 |
| 68T-11191-00-1S | 4 - 9 | 68T-12482-00 | 2 - 17 | 68T-14546-00 | 7 - 8 | 6YL-24306-54 | 27 - 7 | 67D-42177-00 | 17 - 12 | 68T-43155-00 | 18 - 18 |
| 6G8-11197-01 | 4 - 20 | 68T-12483-00 | 6 - 14 | | 33 - 5 | 6AU-24311-00 | 9 - 28 | 6AH-42508-00 | 18 - 1 | 6L2-43160-01 | 21 - 15 |
| 6G8-11325-00 | 4 - 18 | 68T-12535-00 | 16 - 37 | 6AU-14711-00-5B | 23 - 2 | 61N-24329-00 | 9 - 2 | 6AU-42511-00-4D | 22 - 3 | 689-43165-00 | 21 - 16 |
| 68T-11351-00 | 2 - 5 | 68T-12572-00 | 16 - 35 | 6AU-14918-00 | 7 - 18 | 6YL-24329-00 | 27 - 5 | 6AU-42511-10-4D | 22 - 3 | 63V-43191-00 | 21 - 28 |
| | 32 - 9 | 6R3-12581-00 | 16 - 34 | 6AU-1492A-00 | 7 - 11 | 66M-24374-00 | 9 - 19 | 68T-42525-01 | 18 - 2 | 6AH-43311-00-4D | 21 - 19 |
| 68T-11356-00 | 4 - 11 | 6R3-12582-00 | 16 - 32 | 6AU-1492E-46 | 7 - 9 | 650-24378-00 | 4 - 10 | 6AH-42527-00 | 18 - 15 | 6AU-43311-10-4D | 21 - 19 |
| | 32 - 4 | 6R3-12583-00 | 16 - 33 | 6AU-1492F-20 | 7 - 10 | | 6 - 2 | 65W-42528-00 | 18 - 8 | 6AH-43350-00 | 21 - 26 |
| 6H1-11372-00 | 24 - 13 | 66M-13131-00 | 9 - 18 | 6J8-14959-00 | 7 - 19 | 6E9-24378-00 | 2 - 14 | 68T-42561-00 | 18 - 6 | 68T-43611-00 | 21 - 33 |
| 6AU-11411-00 | 3 - 3 | 68T-13300-00 | 8 - 15 | | 33 - 7 | 68T-24410-01 | 9 - 12 | 67C-42562-00 | 18 - 4 | 6AH-43614-00 | 21 - 30 |
| 68T-11416-00 | 3 - 4 | 68T-13329-00 | 8 - 16 | 67D-14966-00 | 7 - 6 | 66M-24411-01 | 9 - 16 | 6AU-42610-10-4D | 1 - 1 | 6AH-43615-00 | 21 - 32 |
| 68T-11416-10 | 3 - 4 | | 32 - 16 | 6AU-14982-00 | 7 - 13 | 66M-24413-01 | 9 - 13 | 6AU-42610-30-4D | 1 - 1 | 6AH-43616-00 | 21 - 21 |
| 68T-11416-20 | 3 - 4 | 68T-13421-01 | 24 - 7 | 6AU-14984-00 | 7 - 12 | 6A0-24421-01 | 9 - 14 | 6AU-42613-00 | 1 - 2 | 6AH-43617-00 | 21 - 24 |
| 68T-11536-00 | 8 - 8 | 67F-13434-10 | 1 - 14 | | 33 - 6 | 66M-24423-00 | 9 - 17 | 60R-42615-00 | 1 - 6 | 6AH-43627-00 | 21 - 38 |
| 66M-11537-00-94 | 8 - 3 | 6AU-13437-40 | 8 - 20 | 66T-14991-00 | 7 - 20 | 66M-24444-00 | 9 - 22 | 68T-42649-00 | 1 - 10 | 6AH-43631-00 | 21 - 20 |
| 68T-11557-00 | 8 - 9 | 6AU-13437-50 | 8 - 20 | 6AU-15100-00-1S | 2 - 2 | 66M-24454-00 | 9 - 20 | 6G1-42651-02 | 1 - 4 | 689-43633-00 | 18 - 7 |
| 6G8-11575-00 | 24 - 9 | 68T-13475-00 | 24 - 20 | 68T-15311-01-5B | 24 - 12 | 66M-24471-01 | 9 - 21 | 68T-42652-00 | 1 - 7 | 6AH-43641-00 | 21 - 23 |
| 6G8-11587-01 | 8 - 10 | | 34 - 4 | 68T-15316-00 | 24 - 17 | 6YL-24610-01 | 27 - 2 | 6AU-42677-00 | 1 - 13 | 68T-43646-00 | 21 - 22 |
| 68T-11603-01 | 3 - 8 | 68T-13641-01-1S | 6 - 1 | 68T-15317-00 | 24 - 18 | 68T-26301-11 | 17 - 20 | 6G9-42678-30 | 1 - 11 | 68T-43659-00 | 21 - 36 |
| 68T-11604-01 | 3 - 8 | 68T-13641-20-1S | 6 - 1 | 68T-15362-00 | 24 - 25 | 68T-26367-00 | 16 - 15 | 6AV-42686-00 | 1 - 13 | 66R-44111-00-4D | 17 - 30 |
| 68T-11605-01 | 3 - 8 | 68T-13645-00 | 6 - 3 | 6G8-15363-00 | 4 - 22 | 68T-26393-00 | 16 - 14 | 68T-42710-01-4D | 16 - 1 | 6AU-44111-10 | 20 - 8 |
| 6AU-11631-00-96 | 3 - 7 | | 32 - 13 | 63V-15705-01 | 10 - 8 | 68T-28100-00 | 9 - 33 | 68T-42716-10 | 16 - 5 | 68T-44113-01 | 17 - 39 |
| 68T-11633-00 | 3 - 9 | 68T-13646-A0 | 6 - 8 | 68T-15710-13 | 10 - 1 | 67F-2812A-00 | 13 - 15 | 65W-42717-00 | 16 - 19 | 66R-44114-00 | 17 - 49 |
| 6AU-11635-00 | 3 - 7 | | 32 - 14 | 68T-15711-03 | 10 - 2 | | 29 - 37 | | 24 - 2 | 65W-44116-00 | 19 - 7 |
| 6AU-11636-00 | 3 - 7 | 68T-14126-00 | 7 - 24 | 63V-15713-00 | 10 - 6 | | 30 - 4 | 68T-42717-00 | 16 - 25 | 66R-44116-00 | 17 - 40 |
| 6AU-11650-00 | 3 - 5 | 68T-14271-00 | 6 - 9 | 63V-15714-00 | 10 - 4 | 6AU-41113-00-1S | 2 - 13 | 68T-42724-20 | 16 - 16 | 66R-44117-00 | 19 - 8 |
| 67D-11654-00 | 3 - 6 | 6AU-14301-00 | 7 - 1 | 68T-15716-00 | 10 - 7 | 68T-41114-A0 | 2 - 15 | 68T-42724-30 | 16 - 16 | 66R-44118-00 | 17 - 41 |
| 67D-12111-00 | 5 - 1 | 6AU-14301-10 | 7 - 1 | 66T-15731-00 | 10 - 21 | | 32 - 11 | 68T-42725-00 | 16 - 13 | 68T-44121-02 | 19 - 2 |
| 60R-12113-00 | 5 - 4 | 6AU-1431A-00 | 7 - 17 | 66T-15734-00 | 10 - 19 | 68T-41137-00-94 | 24 - 1 | 6G1-42725-00 | 14 - 5 | 68T-44143-00 | 19 - 10 |
| 68T-12116-00 | 5 - 3 | 6AU-1431B-00 | 7 - 14 | 63V-15741-00 | 10 - 5 | 6AU-41211-00 | 19 - 21 | 68T-42725-10 | 20 - 16 | 68T-44143-10 | 19 - 10 |
| 7NJ-12117-00 | 5 - 5 | 6E5-14321-00 | 7 - 2 | 63V-15744-00 | 10 - 11 | 68T-41256-00 | 6 - 21 | 68T-42726-00 | 19 - 1 | 68T-44150-00 | 25 - 35 |
| 7NJ-12118-00 | 5 - 6 | 67D-14323-00 | 7 - 21 | 6G1-15755-00 | 10 - 14 | 6J8-41262-00 | 6 - 22 | 6H4-42726-00 | 16 - 18 | 66R-44173-00 | 17 - 31 |
| 51Y-12119-00 | 5 - 7 | 6E7-14325-00 | 9 - 15 | 68T-15762-00 | 10 - 24 | 661-41262-02 | 19 - 28 | 688-42726-10 | 16 - 18 | 6E0-44191-11 | 17 - 50 |
| 67D-12121-00 | 5 - 2 | 67D-1432A-00 | 7 - 25 | 68T-15764-00 | 10 - 13 | 6H4-41271-01 | 6 - 19 | 682-42727-00 | 16 - 10 | 63V-44301-00 | 25 - 19 |
| 6G9-12138-40 | 8 - 19 | 6J8-14334-00 | 7 - 3 | 63V-15767-01 | 10 - 9 | 689-41273-00 | 6 - 20 | 68T-42738-00-4D | 16 - 11 | 63V-44322-00 | 25 - 20 |
| 6G9-12138-50 | 8 - 19 | 6AU-14335-00 | 7 - 15 | 68T-15770-00 | 10 - 20 | 68T-41283-00 | 19 - 19 | 68T-42741-00 | 16 - 20 | | 34 - 14 |
| 68T-12146-00 | 5 - 8 | 6AU-14371-10 | 7 - 16 | 68T-15774-00 | 19 - 30 | 68T-41638-00 | 19 - 18 | 68T-42771-00 | 16 - 26 | 68T-44323-00 | 25 - 25 |
| 68T-12151-00 | 5 - 12 | 6AU-14373-00 | 7 - 27 | 68T-15774-10 | 19 - 30 | 6G1-41662-01-94 | 19 - 3 | 6H8-42791-10 | 16 - 40 | | 34 - 19 |
| 6G8-12158-00 | 5 - 14 | 6AU-14379-00 | 7 - 26 | 6G1-15779-00 | 10 - 16 | 66R-42101-01-4D | 17 - 2 | 6AH-42794-40 | 16 - 41 | 63V-44328-00 | 25 - 28 |
| 6G8-12159-00 | 5 - 13 | 6AU-14385-00 | 7 - 5 | 68T-15784-00 | 10 - 10 | 67D-42119-00 | 17 - 13 | 6AH-42794-50 | 16 - 42 | 664-44338-00 | 25 - 23 |
| 68T-12171-00 | 8 - 2 | | 33 - 3 | 6A0-15789-00 | 10 - 17 | 6AU-42121-10-4D | 17 - 55 | 6AU-42801-00 | 16 - 6 | | 34 - 17 |
| 66M-12411-01 | 2 - 6 | 67D-14386-00 | 7 - 7 | 68T-15793-00 | 10 - 12 | 65W-42125-00 | 17 - 10 | 6AH-43111-00-4D | 21 - 1 | 68T-44352-00 | 25 - 22 |

NUMERICAL INDEX

| PART NO. | REF. NO. | PART NO. | REF. NO. | PART NO. | REF. NO. | PART NO. | REF. NO. | PART NO. | REF. NO. | PART NO. | REF. NO. |
|-----------------|----------|-----------------|----------|--------------|----------|-----------------|----------|-------------|----------|-------------|----------|
| 68T-44352-00 | 34 - 16 | 6G1-45616-01 | 26 - 17 | 689-81826-10 | 15 - 18 | 63V-82377-50 | 21 - 41 | 90109-06M86 | 17 - 3 | 90201-10M02 | 26 - 18 |
| 68T-44361-00 | 26 - 1 | 68T-45631-00 | 25 - 46 | | 29 - 16 | 67F-82504-00 | 12 - 19 | | 19 - 9 | 90201-10M20 | 28 - 2 |
| 68T-44361-10 | 26 - 1 | 6G1-45632-00 | 25 - 47 | 6F5-81830-10 | 15 - 7 | 68T-82522-00 | 12 - 2 | | 19 - 31 | 90201-10M63 | 28 - 7 |
| 63V-44365-10 | 26 - 2 | 654-45633-00 | 25 - 48 | | 29 - 5 | 6F5-82540-01 | 14 - 4 | | 19 - 31 | 90201-12472 | 11 - 15 |
| 68T-44366-00 | 25 - 21 | 6G1-45635-00 | 25 - 50 | 689-81831-00 | 15 - 8 | | 29 - 30 | 90116-08M54 | 22 - 9 | 90201-13201 | 8 - 5 |
| | 34 - 15 | 6G1-45941-00-EL | 26 - 15 | | 29 - 6 | 682-82556-00 | 14 - 2 | 90116-10040 | 17 - 56 | 90201-15M89 | 25 - 44 |
| 6H3-44391-01 | 16 - 9 | 6G1-45943-00-EL | 26 - 15 | 689-81840-11 | 15 - 13 | 65W-82575-01 | 14 - 1 | 90119-05018 | 18 - 3 | 90201-43M00 | 17 - 23 |
| 68T-44517-00-94 | 22 - 10 | 6G1-45947-00-EL | 26 - 15 | | 29 - 11 | 689-8257Y-00 | 14 - 3 | 90119-06012 | 22 - 18 | 90202-10M56 | 18 - 5 |
| 68T-44526-00 | 22 - 11 | 6G1-45952-00-EL | 26 - 15 | 689-81847-11 | 15 - 9 | 68T-82594-10 | 17 - 46 | 90119-06014 | 11 - 6 | 90202-26M59 | 17 - 38 |
| 6AU-44551-00-4D | 22 - 15 | 6G1-45954-00-EL | 26 - 15 | | 29 - 7 | 65W-84342-00 | 16 - 28 | 90119-06049 | 4 - 8 | 90202-43M57 | 17 - 25 |
| 682-44555-30 | 22 - 17 | 6G1-45987-02 | 26 - 11 | 689-81850-11 | 15 - 11 | 68F-85119-00 | 16 - 2 | 90119-06198 | 22 - 19 | 90206-10M24 | 21 - 40 |
| 6AU-44557-00 | 22 - 16 | 68T-46241-00 | 8 - 7 | | 29 - 9 | 68T-85410-00 | 12 - 22 | 90119-06MA1 | 11 - 8 | 90206-26M25 | 17 - 37 |
| 6AU-45111-00-4D | 23 - 1 | 6AU-46297-00 | 8 - 13 | 68T-81857-00 | 15 - 5 | 68T-85520-00 | 11 - 2 | | 11 - 8 | 90206-43M22 | 17 - 24 |
| 6AU-45111-10-4D | 23 - 1 | 68T-48321-01 | 17 - 44 | | 29 - 3 | 68T-85533-00 | 11 - 4 | 90119-06MA2 | 2 - 10 | 90209-10M26 | 18 - 13 |
| 68T-45181-00 | 24 - 3 | 663-48344-00 | 20 - 12 | 68T-81870-00 | 14 - 5 | 68T-85533-10 | 11 - 4 | 90119-06MA3 | 2 - 16 | 90209-40008 | 22 - 5 |
| 6G1-45214-00 | 26 - 6 | | 20 - 14 | | 29 - 31 | 68T-85540-00 | 12 - 1 | | 6 - 5 | 90243-04M01 | 21 - 4 |
| 6G1-45215-00 | 26 - 7 | 66R-48344-00 | 17 - 51 | 68T-81940-00 | 13 - 4 | 68T-85542-00 | 12 - 6 | 90119-06MA5 | 6 - 4 | 90266-04M04 | 1 - 5 |
| 68T-45251-00 | 25 - 6 | 6AU-48501-00 | 20 - 1 | | 29 - 22 | 68T-85550-01 | 11 - 1 | 90119-08005 | 24 - 22 | 90269-02M09 | 17 - 15 |
| 6AU-45300-00-4D | 25 - 1 | 63V-48511-01 | 20 - 17 | 68T-81945-01 | 13 - 8 | 68T-85550-11 | 11 - 1 | 90119-08020 | 15 - 3 | 90280-03M01 | 8 - 12 |
| 6AU-45300-10-4D | 25 - 1 | 68T-48531-00 | 20 - 2 | | 29 - 26 | 680-85570-01 | 12 - 10 | 90119-08046 | 15 - 2 | | 32 - 12 |
| 6AU-45311-00-4D | 25 - 2 | 63D-48538-00 | 17 - 43 | 68T-81949-00 | 30 - 1 | 68T-85580-01 | 11 - 3 | 90119-08M29 | 2 - 4 | 90280-04M06 | 11 - 13 |
| 68T-45315-A0 | 25 - 32 | | 19 - 17 | 68T-81960-00 | 12 - 15 | 6H2-85582-00 | 11 - 5 | 90119-08M76 | 15 - 19 | 90338-06M20 | 16 - 27 |
| | 34 - 11 | 66R-48538-00 | 17 - 42 | | 29 - 38 | 68T-85711-40 | 10 - 27 | | 29 - 17 | 90338-07M16 | 31 - 2 |
| 6G1-45316-09 | 25 - 30 | 68T-48538-00 | 19 - 14 | 664-81970-62 | 12 - 15 | 68T-85711-50 | 10 - 27 | 90149-05M13 | 17 - 16 | 90340-08002 | 25 - 9 |
| 6G1-45317-09 | 25 - 3 | 682-48538-50 | 20 - 3 | 6AH-81994-40 | 10 - 28 | | 11 - 21 | 90151-05003 | 17 - 47 | 90340-10M10 | 24 - 15 |
| 68T-45321-00 | 23 - 5 | 68T-61350-10 | 28 - 1 | | 11 - 22 | 6AU-W0001-00 | 32 - 1 | 90152-05M03 | 26 - 8 | 90386-08032 | 17 - 19 |
| 68T-45331-00-5B | 25 - 29 | 6E5-61355-00 | 28 - 6 | 6AH-81994-50 | 10 - 29 | 68T-W0001-20 | 34 - 1 | 90157-05M16 | 27 - 4 | 90386-22MA4 | 21 - 8 |
| 6G1-45361-01-4D | 25 - 11 | 68T-81328-00 | 11 - 9 | | 11 - 23 | 68T-W0070-20 | 1 - 12 | 90159-06M18 | 17 - 32 | 90386-26MA3 | 17 - 36 |
| 6G1-45362-09 | 25 - 12 | 6AV-81337-00 | 11 - 16 | 6AH-81995-40 | 10 - 25 | 68T-W0078-00 | 34 - 13 | 90167-06002 | 16 - 36 | 90386-30048 | 22 - 6 |
| 63V-45375-00 | 26 - 10 | 68T-81800-00 | 15 - 4 | | 11 - 19 | 68T-W0084-10-4D | 17 - 1 | 90170-05M38 | 17 - 53 | 90386-30M60 | 22 - 8 |
| 6AU-45511-00 | 25 - 36 | | 29 - 2 | 6AH-81995-50 | 10 - 26 | 6AU-W0093-00 | 33 - 1 | 90170-06015 | 19 - 12 | 90386-40001 | 22 - 4 |
| 6AU-45511-10 | 25 - 36 | 689-81807-12 | 15 - 6 | | 11 - 20 | 6AU-W009A-01-1S | 4 - 1 | 90170-09M03 | 28 - 4 | 90386-40M99 | 17 - 26 |
| 6G1-45533-00 | 25 - 40 | | 29 - 4 | 68T-82105-00 | 29 - 42 | 6AU-W009B-00-1S | 2 - 1 | 90170-12066 | 11 - 14 | 90387-05M05 | 18 - 9 |
| 6G1-45533-10 | 25 - 40 | 689-81809-11 | 15 - 10 | 69G-82105-00 | 13 - 1 | 69G-W1257-00 | 31 - 1 | 90170-24M09 | 8 - 11 | 90387-05M11 | 18 - 10 |
| 6G1-45533-20 | 25 - 40 | | 29 - 8 | 6G8-82117-00 | 13 - 2 | 6G1-W4591-01-EL | 26 - 16 | 90171-10M01 | 26 - 13 | 90387-06138 | 21 - 34 |
| 6G1-45533-30 | 25 - 40 | 689-81810-11 | 15 - 12 | | 29 - 20 | 6G1-W4592-00-EL | 26 - 16 | 90179-06M28 | 22 - 20 | 90387-06176 | 16 - 4 |
| 68T-45551-00 | 25 - 39 | | 29 - 10 | 6A0-82119-00 | 12 - 18 | 68R-W8180-11 | 29 - 1 | 90179-10M33 | 17 - 57 | 90387-06M13 | 21 - 11 |
| 68T-45560-00 | 25 - 41 | 689-81811-11 | 15 - 14 | 68T-82127-00 | 22 - 2 | 90101-06M18 | 21 - 12 | 90185-05002 | 26 - 9 | 90387-06M59 | 19 - 20 |
| 647-45567-00 | 25 - 45 | | 29 - 12 | 68T-82127-10 | 12 - 20 | 90101-08022 | 18 - 16 | 90185-08057 | 20 - 20 | 90387-06M70 | 6 - 12 |
| 68T-45571-00 | 25 - 43 | 689-81812-11 | 15 - 15 | 68T-82150-00 | 13 - 12 | 90105-06M14 | 8 - 4 | 90185-09M01 | 28 - 3 | 90387-10M42 | 28 - 5 |
| 664-45587-01 | 25 - 42 | | 29 - 13 | | 29 - 34 | 90105-08M36 | 4 - 6 | 90185-10M14 | 18 - 14 | 90387-13M56 | 5 - 9 |
| 664-45587-10 | 25 - 42 | 689-81813-10 | 15 - 16 | 66V-82151-00 | 13 - 13 | 90105-08M78 | 4 - 7 | 90185-22043 | 21 - 10 | 90387-14M03 | 5 - 10 |
| 664-45587-20 | 25 - 42 | | 29 - 14 | | 29 - 35 | 90109-06M80 | 17 - 4 | 90201-06M62 | 17 - 52 | 90387-14M49 | 25 - 4 |
| 664-45587-30 | 25 - 42 | 689-81820-11 | 15 - 17 | | 30 - 2 | | 17 - 5 | | 19 - 23 | 90430-08020 | 25 - 10 |
| 664-45587-40 | 25 - 42 | | 29 - 15 | 68T-82171-01 | 13 - 14 | | 17 - 6 | 90201-06M94 | 8 - 6 | | 34 - 5 |
| 664-45587-50 | 25 - 42 | 68T-81821-00 | 14 - 6 | | 29 - 36 | 90109-06M81 | 16 - 12 | 90201-08065 | 18 - 17 | 90430-08143 | 24 - 5 |
| 664-45587-60 | 25 - 42 | | 29 - 32 | | 30 - 3 | | 19 - 4 | 90201-10M01 | 26 - 12 | 90430-10M11 | 24 - 16 |
| 68T-45611-00 | 25 - 51 | 68T-81822-01-94 | 15 - 1 | 6E3-82370-21 | 12 - 14 | 90109-06M84 | 21 - 39 | 90201-10M02 | 17 - 17 | | 34 - 3 |

NUMERICAL INDEX

| PART NO. | REF. NO. | PART NO. | REF. NO. | PART NO. | REF. NO. | PART NO. | REF. NO. | PART NO. | REF. NO. | PART NO. | REF. NO. |
|-------------|----------|-------------|----------|-------------|----------|-------------|----------|-------------|----------|----------|----------|
| 90445-09074 | 6 - 7 | 90506-18014 | 21 - 27 | 92995-06600 | 29 - 40 | 93604-12M07 | 25 - 26 | 97095-06025 | 9 - 3 | | |
| 90445-09M20 | 6 - 7 | 90506-20020 | 21 - 31 | | 30 - 6 | | 26 - 3 | | 12 - 12 | | |
| 90445-10046 | 9 - 5 | 90506-20025 | 21 - 27 | 92995-08600 | 15 - 21 | 93606-19M23 | 24 - 11 | 97095-06030 | 8 - 17 | | |
| 90445-10M50 | 9 - 9 | 90506-23016 | 21 - 31 | | 17 - 35 | 93700-06M03 | 22 - 1 | | 9 - 24 | | |
| 90445-16010 | 9 - 11 | 91490-16010 | 17 - 11 | | 20 - 19 | 94702-00274 | 4 - 24 | 97095-06045 | 19 - 24 | | |
| 90446-10M86 | 13 - 3 | 91490-20012 | 17 - 54 | | 23 - 10 | 95380-04600 | 9 - 23 | 97095-08012 | 12 - 7 | | |
| | 29 - 21 | 91490-30020 | 26 - 14 | | 24 - 24 | 95380-06600 | 16 - 24 | 97095-08014 | 24 - 4 | | |
| 90446-14M66 | 9 - 30 | 91690-30008 | 21 - 17 | | 26 - 5 | | 20 - 7 | 97095-08016 | 15 - 20 | | |
| 90446-15002 | 17 - 45 | 91690-30012 | 20 - 4 | | 29 - 19 | 95380-06700 | 19 - 13 | | 29 - 18 | | |
| 90447-07005 | 17 - 21 | 91690-30014 | 19 - 6 | 93101-11M23 | 25 - 31 | | 21 - 14 | 97095-08030 | 17 - 34 | | |
| 90447-13M00 | 16 - 31 | 91690-50014 | 6 - 6 | | 34 - 10 | 95380-08600 | 22 - 12 | 97575-06514 | 23 - 3 | | |
| 90464-10M53 | 9 - 32 | 92903-06600 | 11 - 11 | 93101-12M70 | 24 - 6 | 95380-10700 | 17 - 29 | 97595-06585 | 6 - 13 | | |
| 90464-10M60 | 19 - 5 | 92907-04600 | 4 - 17 | | 34 - 2 | 95780-10300 | 17 - 28 | 97780-40512 | 12 - 3 | | |
| 90465-08M83 | 6 - 16 | 92990-05600 | 12 - 17 | 93101-15074 | 25 - 14 | 95895-06016 | 25 - 7 | 97780-60516 | 1 - 3 | | |
| 90465-08M99 | 6 - 15 | 92990-06300 | 25 - 8 | | 34 - 6 | 97013-06012 | 11 - 10 | 97880-05025 | 4 - 19 | | |
| | 15 - 23 | 92990-06600 | 21 - 13 | 93101-25M69 | 3 - 2 | 97075-06025 | 22 - 13 | | 12 - 16 | | |
| 90465-11M10 | 2 - 12 | 92995-05600 | 1 - 9 | | 32 - 8 | 97075-08030 | 24 - 23 | 97885-05008 | 23 - 7 | | |
| | 9 - 6 | | 18 - 12 | 93102-18M21 | 8 - 1 | 97075-08035 | 20 - 18 | | 24 - 19 | | |
| | 9 - 31 | | 20 - 11 | | 32 - 2 | | 23 - 9 | 97885-06030 | 16 - 21 | | |
| | 11 - 12 | 92995-06100 | 9 - 25 | 93102-30M22 | 3 - 1 | | 26 - 4 | 97980-04112 | 7 - 4 | | |
| | 12 - 21 | | 13 - 6 | | 32 - 7 | 97080-08025 | 25 - 34 | | 33 - 2 | | |
| | 14 - 7 | | 16 - 22 | 93210-06ME6 | 25 - 33 | 97080-08045 | 25 - 27 | 98507-04010 | 4 - 16 | | |
| | 15 - 22 | | 29 - 24 | | 34 - 12 | | 34 - 20 | 99001-07600 | 25 - 38 | | |
| | 16 - 30 | 92995-06600 | 4 - 13 | 93210-12327 | 20 - 9 | 97095-05010 | 11 - 7 | 99080-04600 | 17 - 48 | | |
| | 29 - 33 | | 6 - 18 | 93210-12M62 | 24 - 10 | 97095-05014 | 1 - 8 | 99080-05600 | 21 - 25 | | |
| | 29 - 41 | | 8 - 18 | 93210-13M63 | 4 - 21 | 97095-05016 | 20 - 10 | | 21 - 29 | | |
| | 31 - 3 | | 9 - 4 | | 32 - 6 | 97095-05020 | 18 - 11 | | 21 - 37 | | |
| 90465-12M56 | 13 - 11 | | 9 - 26 | 93210-16275 | 28 - 9 | 97095-06008 | 23 - 6 | 99510-10114 | 4 - 5 | | |
| | 29 - 29 | | 10 - 23 | 93210-20M65 | 9 - 27 | 97095-06010 | 6 - 17 | 99530-12016 | 2 - 3 | | |
| 90467-09M05 | 25 - 37 | | 11 - 18 | | 32 - 18 | | 13 - 5 | | | | |
| 90467-09M09 | 9 - 7 | | 12 - 5 | 93210-24M79 | 4 - 23 | | 29 - 23 | | | | |
| | 9 - 10 | | 12 - 9 | | 12 - 9 | 97095-06012 | 12 - 8 | | | | |
| | 9 - 29 | | 12 - 13 | 93210-29M94 | 22 - 7 | | 12 - 16 | | | | |
| 90467-11M08 | 24 - 8 | | 12 - 17 | 93210-31MJ5 | 6 - 11 | | 13 - 9 | | | | |
| 90468-18001 | 19 - 11 | | 13 - 7 | | 32 - 15 | | 15 - 24 | | | | |
| 90468-18008 | 20 - 13 | | 13 - 10 | 93210-44398 | 25 - 24 | | 16 - 7 | | | | |
| | 20 - 15 | | 15 - 25 | | 34 - 9 | | 16 - 38 | | | | |
| 90480-06M19 | 16 - 17 | | 16 - 8 | | 34 - 18 | | 19 - 15 | | | | |
| | 31 - 4 | | 16 - 23 | 93210-49046 | 25 - 15 | | 19 - 26 | | | | |
| | 8 - 14 | | 16 - 39 | | 34 - 7 | | 20 - 5 | | | | |
| 90480-10627 | 24 - 14 | | 19 - 16 | 93210-53M08 | 25 - 16 | | 29 - 27 | | | | |
| 90480-10M28 | 23 - 4 | | 19 - 25 | | 34 - 8 | | 29 - 39 | | | | |
| 90480-14M54 | 16 - 3 | | 19 - 27 | 93306-004U0 | 25 - 5 | | 30 - 5 | | | | |
| 90480-21M82 | 12 - 11 | | 20 - 6 | | 25 - 13 | 97095-06016 | 25 - 17 | | | | |
| 90480-25003 | 5 - 11 | | 22 - 14 | 93430-04M03 | 21 - 35 | 97095-06020 | 4 - 12 | | | | |
| 90501-12M40 | 25 - 49 | | 25 - 18 | 93450-15023 | 3 - 10 | | 10 - 22 | | | | |
| 90501-140A1 | 17 - 18 | | 29 - 25 | 93604-12M07 | 23 - 8 | | 11 - 17 | | | | |
| 90501-23215 | 21 - 18 | | 29 - 28 | | 24 - 21 | | 12 - 4 | | | | |
| 90502-10M07 | | | | | | | | | | | |